

Coleman Road, Evington

£250,000

This TWO-BEDROOM end-terrace is ideally located near LEICESTER GENERAL HOSPITAL, Evington Village, and Leicester City Centre. Featuring plenty of ON-STREET PARKING, a living room, kitchen, dining/utility room, two bedrooms, bathroom, and lovely GARDENS. Contact our Oadby office to view!

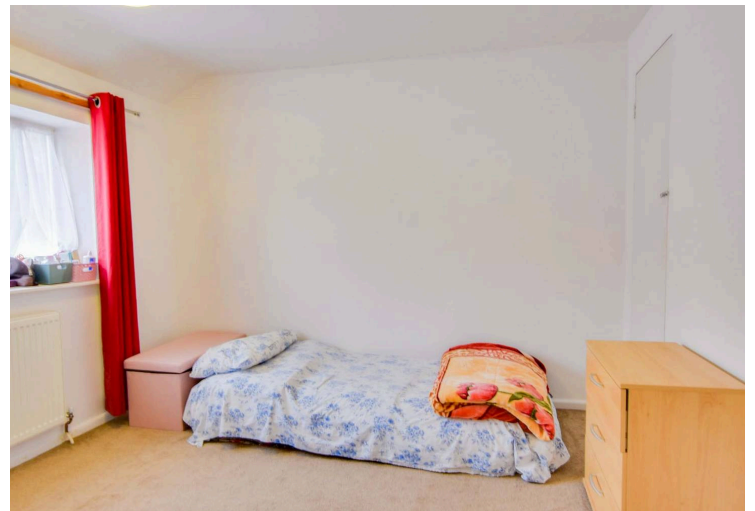


Council Tax band: A

Tenure: Freehold

EPC Energy Efficiency Rating: D





Entrance Hall

With a double-glazed window to the side elevation, laminate flooring and a radiator.

Living Room

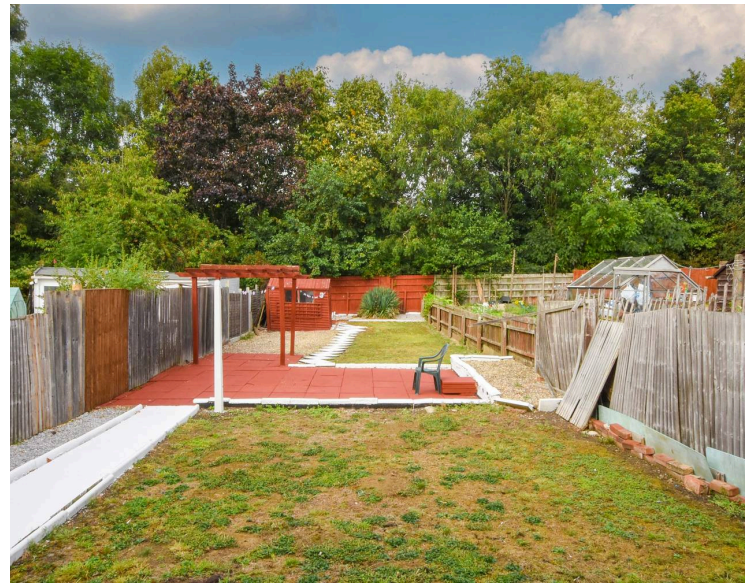
18' 11" x 10' 9" (5.77m x 3.28m)

With a double-glazed window to the front elevation, double glazed patio doors to the rear elevation leading to a useful decking area, laminate flooring, gas fire and two radiators.

Kitchen

9' 0" x 7' 4" (2.74m x 2.24m)

With a double-glazed window to the rear elevation, a pantry with tiled flooring and useful shelving units, a sink and drainer unit with a range of wall units with under unit lighting and base units with work surfaces over, tiled flooring, tiled walls, oven, hob, extractor fan and a radiator.



Diner/Utility

14' 9" x 8' 10" (4.50m x 2.69m)

With a double-glazed window to the front elevation, door to the front elevation, worktops, space for two appliances, a useful storage cupboard with shelving and lighting, terracotta tiled flooring and a radiator.

First Floor Landing

With a double-glazed window to the side elevation and carpeting.

Bedroom One

13' 11" x 8' 9" (4.24m x 2.67m)

With two double-glazed windows to the front elevation, a storage cupboard with lighting and a radiator, carpeting and a radiator.

Bedroom Two

10' 4" x 10' 0" (3.15m x 3.05m)

With a double-glazed window to the rear elevation, storage cupboard, carpeting and a radiator.

Bathroom

6' 1" x 5' 11" (1.85m x 1.80m)

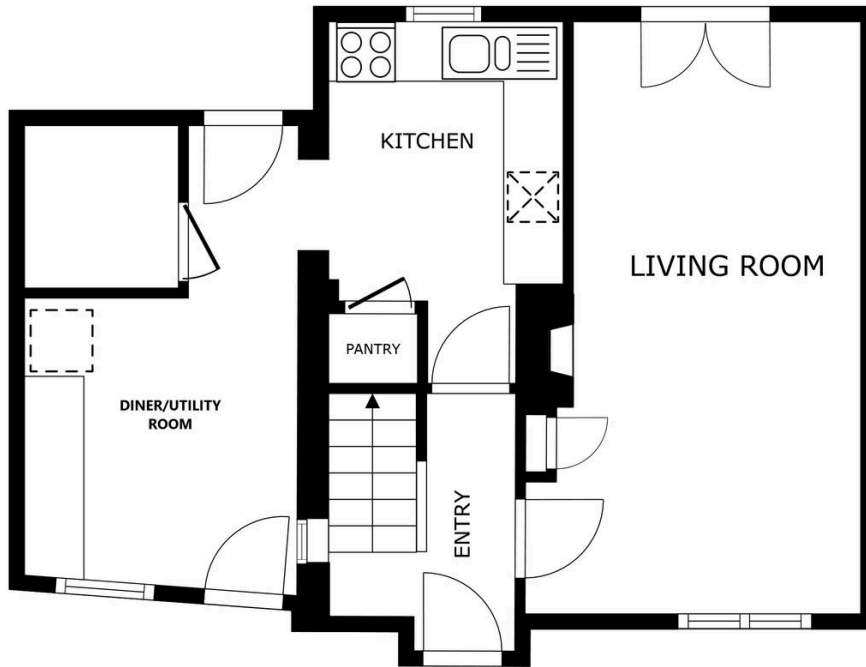
With a double-glazed window to the rear elevation, partly tiled walls, WC, wash hand basin, bath and a radiator.

Front Garden

With Lawn, fencing, outside lighting, decorative pebbled areas and a patio area.

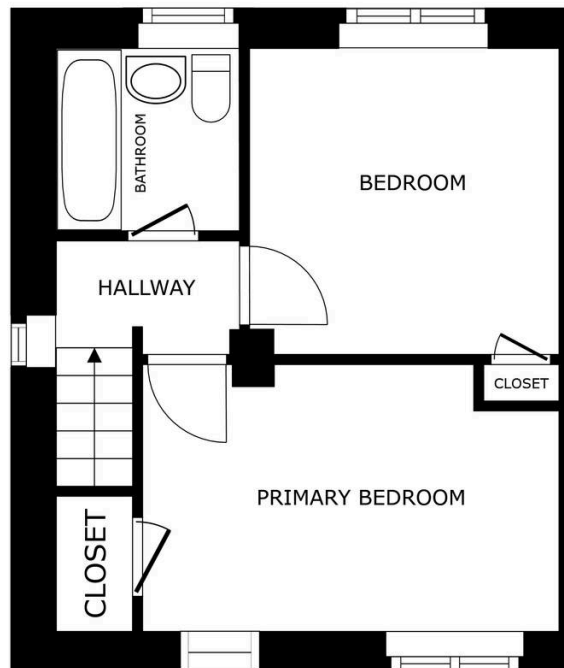
Rear Garden

A beautiful garden with a decking area, slabbed pathway, wood-built storage shed and lawn.



FLOOR 1

GROSS INTERNAL AREA
 FLOOR 1 46.8 m² FLOOR 2 31.2 m²
 TOTAL : 77.9 m²
SIZES AND DIMENSIONS ARE APPROXIMATE, ACTUAL MAY VARY.



FLOOR 2

GROSS INTERNAL AREA
 FLOOR 1 46.8 m² FLOOR 2 31.2 m²
 TOTAL : 77.9 m²
SIZES AND DIMENSIONS ARE APPROXIMATE, ACTUAL MAY VARY.



We'll keep you moving...



We must inform all prospective purchasers that the measurements are taken by an electronic take and are provided as a guide only and they should not be used as accurate measurements. We have not tested any mains services, gas or electric appliances, or fixtures and fittings mentioned in these details, therefore, prospective purchasers should satisfy themselves before committing to purchase. Intending purchasers must satisfy themselves by inspection or otherwise to the correctness of the statements contained in these particulars. Knightsbridge Estate Agents (nor any person in their employment) has any authority to make any representation or warranty in relation to the property. The floor plans are not to scale, and are intended for use as a guide to the layout of the property only. They should not be used for any other purpose. We are required by law to conduct anti-money laundering checks on all those selling or buying a property. Whilst we retain responsibility for ensuring checks and any ongoing monitoring are carried out correctly, the initial checks are carried out on our behalf by Lifetime Legal who will contact you once you have agreed to instruct us in your sale or had an offer accepted on a property you wish to buy. The cost of these checks is £60 (incl. VAT), which covers the cost of obtaining relevant data and any manual checks and monitoring which might be required. This fee will need to be paid by you in advance of us publishing your property (in the case of a vendor) or issuing a memorandum of sale (in the case of a buyer), directly to Lifetime Legal, and is non-refundable. We will receive some of the fee taken by Lifetime Legal to compensate for its role in the provision of these checks.