



## Fairfield Road, Oadby

Offers in Excess of £260,000

Located within a CUL-DE-SAC off Uplands Road, this traditional three bedroom semi-detached property has been extended to the rear to provide a GROUND FLOOR THIRD BEDROOM/reception room with an EN-SUITE shower room. Parking is available to the front via off road parking.

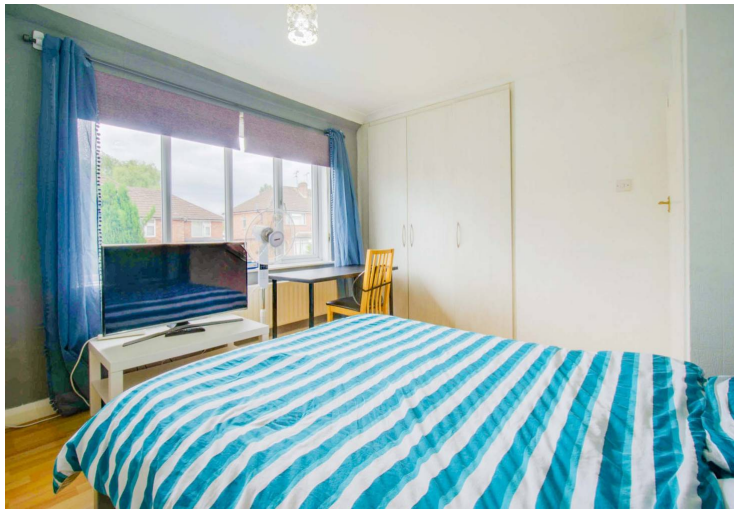


Council Tax band: B

Tenure: Freehold

EPC Energy Efficiency Rating: D





### **Entrance Hall**

With stairs to first floor, radiator.

### **Lounge**

14' 6" x 12' 8" (4.42m x 3.86m)

With bay window to the front elevation, gas fire with surround and hearth, wall lights, meter cupboard, wood effect floor, radiator.

### **Kitchen Diner**

15' 9" x 7' 10" (4.80m x 2.39m)

With window to the side elevation, wall and base units with work surface over, under stairs storage cupboard, oven and gas hob with extractor fan over, part tiled walls, wood effect floor, heated towel rail.



### **Utility Area**

12' 0" x 5' 6" (3.66m x 1.68m)

With window and door to the rear elevation, roof window, wall and base units with work surface over, sink and drainer, place for washing machine and tumble dryer, part tiled walls, wood effect floor, radiator.

### **Ground Floor Bedroom**

8' 9" x 89' 0" (2.67m x 27.13m)

With window to the rear elevation, built-in storage cupboards, storage heater.

### **En-Suite**

8' 9" x 2' 11" (2.67m x 0.89m)

With shower cubicle, wash hand basin, low-level WC, medicine cabinet, part tiled walls, tiled floor, heated towel rail.

### **First Floor Landing**

With window to the side elevation, loft access.

### **Bedroom One**

11' 11" x 10' 10" (3.63m x 3.30m)

With window to the front elevation, built-in wardrobes, radiator.

### **Bedroom Two**

10' 4" x 9' 7" (3.15m x 2.92m)

With window to the rear elevation, fitted wardrobe, radiator.

### **Bathroom**

7' 4" x 5' 11" (2.24m x 1.80m)

With window to the rear elevation, low-level WC, wash hand basin, medicine cabinet, bath with shower over, tiled walls, heated towel rail.

### **Front Garden**

Paved frontage with shrubs.

### **Rear Garden**

With slate patio area, lawn, paved pathway, mature flowerbeds and shrubs, sheds, fencing to perimeter, water supply.

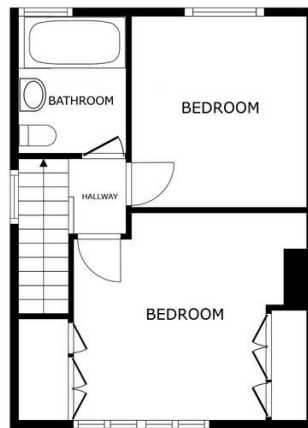
### **Driveway**

Providing off road parking.



FLOOR 1

SIZES AND DIMENSIONS ARE APPROXIMATE, ACTUAL MAY VARY.



FLOOR 2

SIZES AND DIMENSIONS ARE APPROXIMATE, ACTUAL MAY VARY.



**We'll keep you moving...**



We must inform all prospective purchasers that the measurements are taken by an electronic take and are provided as a guide only and they should not be used as accurate measurements. We have not tested any mains services, gas or electric appliances, or fixtures and fittings mentioned in these details, therefore, prospective purchasers should satisfy themselves before committing to purchase. Intending purchasers must satisfy themselves by inspection or otherwise to the correctness of the statements contained in these particulars. Knightsbridge Estate Agents (nor any person in their employment) has any authority to make any representation or warranty in relation to the property. The floor plans are not to scale, and are intended for use as a guide to the layout of the property only. They should not be used for any other purpose. We are required by law to conduct anti-money laundering checks on all those selling or buying a property. Whilst we retain responsibility for ensuring checks and any ongoing monitoring are carried out correctly, the initial checks are carried out on our behalf by Lifetime Legal who will contact you once you have agreed to instruct us in your sale or had an offer accepted on a property you wish to buy. The cost of these checks is £60 (incl. VAT), which covers the cost of obtaining relevant data and any manual checks and monitoring which might be required. This fee will need to be paid by you in advance of us publishing your property (in the case of a vendor) or issuing a memorandum of sale (in the case of a buyer), directly to Lifetime Legal, and is non-refundable. We will receive some of the fee taken by Lifetime Legal to compensate for its role in the provision of these checks.