



## Windrush Drive, Oadby

Offers Over £300,000

A THREE BEDROOM semi-detached property offered for sale in Oadby with a through lounge dining room having sliding patio doors to the rear garden. Parking is available via a driveway providing access to a carport and garage to the rear. We encourage you to contact us to secure your viewing.



0116 271 3333

Council Tax band: B

Tenure: Freehold

EPC Energy Efficiency Rating: C





### **Entrance Porch**

Leading to:

### **Entrance Hall**

With fitted storage cupboard and drawers, stairs to first floor, under stairs storage, radiator.

### **Lounge** 14' 3" x 11' 4" (4.34m x 3.45m)

With double glazed window to the front elevation, gas fire with inset surround and hearth, radiator.

### **Dining Room** 9' 3" x 8' 8" (2.82m x 2.64m)

With double glazed sliding patio doors to the rear elevation, radiator.

### **Kitchen** 9' 3" x 8' 1" (2.82m x 2.46m)

With double glazed window to the rear elevation, double glazed door to the rear garden, wall and base units with work surface over, sink, tiled walls, tiled floor, built-in double oven, hob, plumbing for washing machine, service hatch.



### **First Floor Landing**

With double glazed window to the side elevation, fitted storage cupboard, loft access.

### **Bedroom One** 12' 8" x 9' 3" (3.86m x 2.82m)

With double glazed window to the front elevation, fitted wardrobes, box cupboards, drawers and vanity unit, radiator.

### **Bedroom Two** 9' 10" x 8' 6" (3.00m x 2.59m)

Measurement up to wardrobes. With double glazed window to the rear elevation, fitted wardrobes, radiator.

### **Bedroom Three** 8' 9" x 7' 0" (2.67m x 2.13m)

With double glazed window to the front elevation, fitted storage cupboards (one housing the boiler), shelving and desk, radiator.

### **Bathroom**

With double glazed window to the rear elevation, bath with shower over and shower screen, low-level WC, wash hand basin, tiled walls, tiled floor, chrome ladder towel rail.

### **Front Garden**

Pebbled frontage.

### **Rear Garden**

With paved seating area, lawn, paved pathways, flowerbeds and shrubs, pebbled area to the rear with stepping stones, gate to rear.

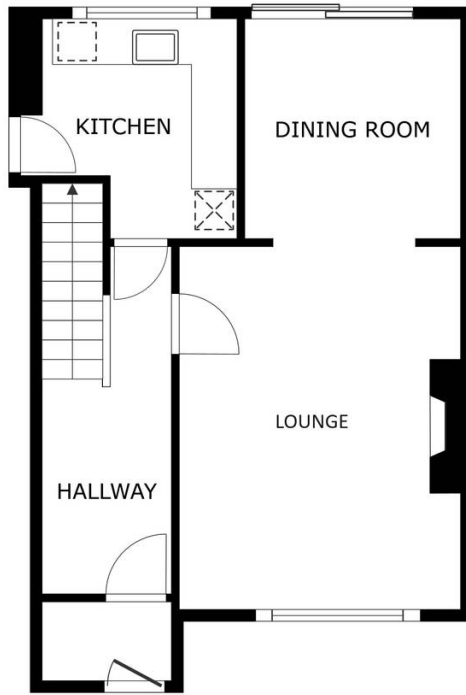
### **Driveway** 2 Vehicles

Providing off road parking.

### **Carport** 1 vehicles

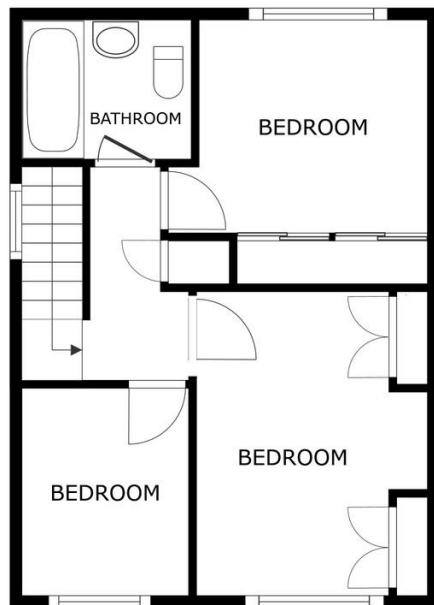
### **Garage** 1 Vehicles

Measuring 12'10" x 8'7". With window to the side elevation, up and over door to the front elevation.



FLOOR 1

SIZES AND DIMENSIONS ARE APPROXIMATE, ACTUAL MAY VARY.



FLOOR 2

SIZES AND DIMENSIONS ARE APPROXIMATE, ACTUAL MAY VARY.



**We'll keep you moving...**



We must inform all prospective purchasers that the measurements are taken by an electronic take and are provided as a guide only and they should not be used as accurate measurements. We have not tested any mains services, gas or electric appliances, or fixtures and fittings mentioned in these details, therefore, prospective purchasers should satisfy themselves before committing to purchase. Intending purchasers must satisfy themselves by inspection or otherwise to the correctness of the statements contained in these particulars. Knightsbridge Estate Agents (nor any person in their employment) has any authority to make any representation or warranty in relation to the property. The floor plans are not to scale, and are intended for use as a guide to the layout of the property only. They should not be used for any other purpose. We are required by law to conduct anti-money laundering checks on all those selling or buying a property. Whilst we retain responsibility for ensuring checks and any ongoing monitoring are carried out correctly, the initial checks are carried out on our behalf by Lifetime Legal who will contact you once you have agreed to instruct us in your sale or had an offer accepted on a property you wish to buy. The cost of these checks is £60 (incl. VAT), which covers the cost of obtaining relevant data and any manual checks and monitoring which might be required. This fee will need to be paid by you in advance of us publishing your property (in the case of a vendor) or issuing a memorandum of sale (in the case of a buyer), directly to Lifetime Legal, and is non-refundable. We will receive some of the fee taken by Lifetime Legal to compensate for its role in the provision of these checks.