

## Foxhunter Drive, Oadby

£260,000

A semi-detached bungalow in the suburb of Oadby with two reception rooms, a kitchen, a bathroom and two bedrooms. Outside, there is a front garden, driveway, garage and delightful mature rear garden.

Council Tax band: C

Tenure: Freehold

Energy Rating: E



Knightsbridge  
Estate Agents

0116 271 3333





**Entrance Lobby**

With internal door to the:

**Entrance Hall**

With loft access, cloaks cupboard and a radiator.

**Living Room**

14' 8" x 12' 6" (4.47m x 3.81m)

With a double-glazed window to the front elevation, double-glazed window to the side elevation, fire place and a radiator.

**Kitchen**

10' 1" x 8' 8" (3.07m x 2.64m)

With a double-glazed window to the side elevation, a sink and drainer unit with a range of wall and base units with work surfaces over, a gas cooker point and plumbing for a washing machine.



### **Reception Room Two**

11' 1" x 8' 8" (3.38m x 2.64m)

With double-glazed windows to the rear and side elevations, a door to the side elevation, a wall-mounted boiler and a radiator.

### **Bedroom One**

12' 4" x 11' 4" (3.76m x 3.45m)

With a double-glazed window to the front elevation and a radiator.

### **Bedroom Two**

10' 7" x 9' 0" (3.23m x 2.74m)

With a double-glazed window to the rear elevation and a radiator.

### **Bathroom**

7' 7" x 6' 0" (2.31m x 1.83m)

With a double-glazed window to the rear elevation, bath with shower over, wash hand basin, WC, storage cupboard, tiled walls and a radiator.

### **Rear Garden**

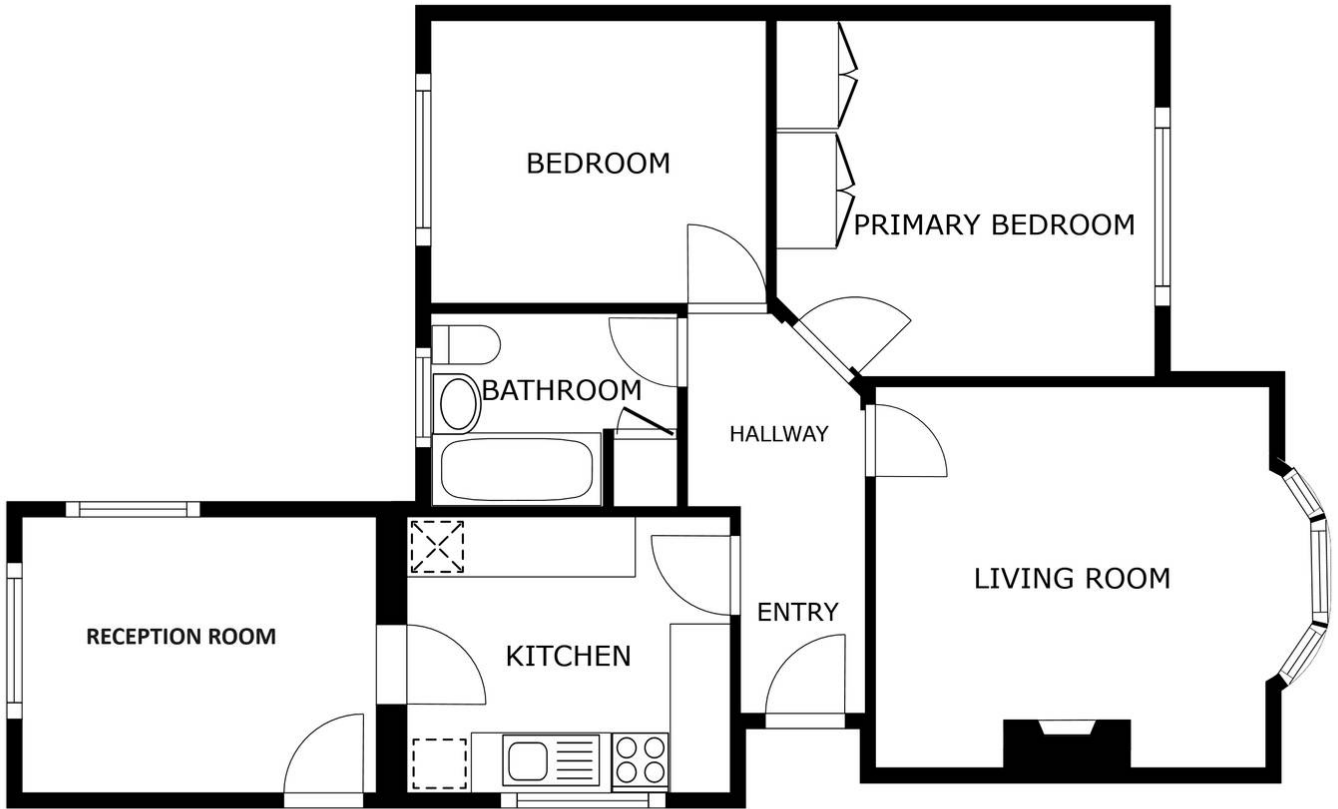
With a patio seating area, lawn, flower bed borders, mature trees and fencing to the perimeter.

### **Driveway**

With gated access leading to a further driveway and a lawned front garden with flower beds and hedges.

### **Garage**

20' x 9'4" with power and lighting and side door.



FLOOR PLAN

SIZES AND DIMENSIONS ARE APPROXIMATE, ACTUAL MAY VARY.



**We'll keep you moving...**



We must inform all prospective purchasers that the measurements are taken by an electronic tape and are provided as a guide only and they should not be used as accurate measurements. We have not tested any mains services, gas or electric appliances, or fixtures and fittings mentioned in these details, therefore, prospective purchasers should satisfy themselves before committing to purchase. Intending purchasers must satisfy themselves by inspection or otherwise to the correctness of the statements contained in these particulars. Knightsbridge Estate Agents & valuers (nor any person in their employment) has any authority to make any representation or warranty in relation to the property. The floor plans are not to scale, and are intended for use as a guide to the layout of the property only. They should not be used for any other purpose. Similarly, the plans are not designed to represent the actual décor found at the property in respect of flooring, wall coverings or fixtures and fittings.