



Hermitage Court, Honeywell Close, Oadby

Offers Over £150,000

A good size GROUND FLOOR two bedroom apartment situated in Hermitage Court via SECURE GATED access leading to allocated parking.

Council Tax band: B

Tenure: Leasehold

EPC Energy Efficiency Rating: C



0116 271 3333





Entrance Hall

With storage cupboard housing the fuse board, further storage cupboard, radiator.

Open Plan Living Kitchen Dining Room

20' 8" x 15' 5" (6.30m x 4.70m)

With two sets of double glazed French doors to the rear elevation, part laminate floor, wall and base units with work surfaces over, fitted oven and hob with extractor fan and stainless steel splash back, stainless steel sink and drainer, built-in fridge freezer, built-in dishwasher, plumbing for washing machine, radiators.

Bedroom One

12' 6" x 11' 3" (3.81m x 3.43m)

With double glazed bay window to the side elevation, built-in storage cupboard, radiator.

En-Suite

8' 10" x 4' 10" (2.69m x 1.47m)

With walk-in shower cubicle, wash hand basin, low-level WC, part tiled walls, tiled floor, ladder style towel rail/radiator.



Bedroom Two

11' 10" x 8' 8" (3.61m x 2.64m)

With double glazed window to the side elevation, storage cupboard, boiler, radiator.

Bathroom

7' 0" x 6' 2" (2.13m x 1.88m)

With bath, wash hand basin, low-level WC, tiled floor, part tiled walls, ladder style towel rail/radiator.

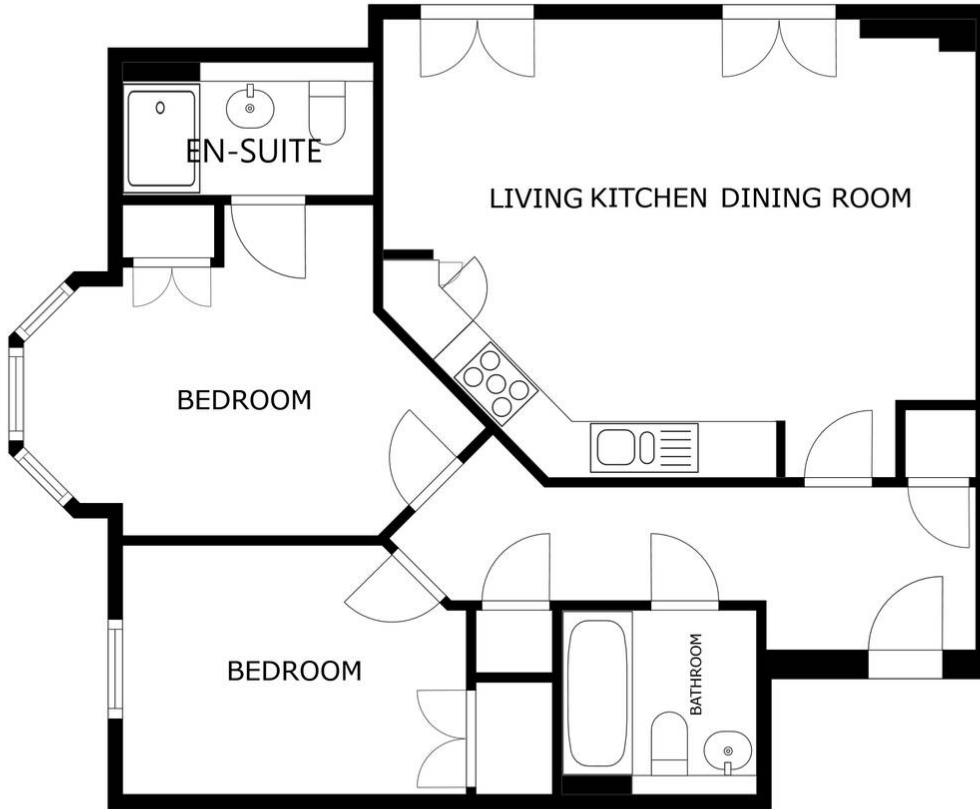
Parking

Allocated parking.

Lease Details

Current Service Charge: £1,122 every 6 months

Length of Lease: 80 years remaining



FLOOR PLAN

SIZES AND DIMENSIONS ARE APPROXIMATE, ACTUAL MAY VARY.



We'll keep you moving...



We must inform all prospective purchasers that the measurements are taken by an electronic tape and are provided as a guide only and they should not be used as accurate measurements. We have not tested any mains services, gas or electric appliances, or fixtures and fittings mentioned in these details, therefore, prospective purchasers should satisfy themselves before committing to purchase. Intending purchasers must satisfy themselves by inspection or otherwise to the correctness of the statements contained in these particulars. Knightsbridge Estate Agents & valuers (nor any person in their employment) has any authority to make any representation or warranty in relation to the property. The floor plans are not to scale, and are intended for use as a guide to the layout of the property only. They should not be used for any other purpose. Similarly, the plans are not designed to represent the actual décor found at the property in respect of flooring, wall coverings or fixtures and fittings.