



Carbery Close, Oadby

Offers Over £260,000

A three-bedroom semi-detached home with scope for EXTENSION, subject to the relevant planning permissions.

Council Tax band: C

Tenure: Freehold

EPC Energy Efficiency Rating: C



0116 271 3333





Entrance Hall

With laminate flooring and a meter cupboard.

Reception Room

14' 8" x 14' 4" (4.47m x 4.37m)

With two windows to the side elevation, laminate flooring and two radiators.

Kitchen

14' 8" x 8' 9" (4.47m x 2.67m)

With a window to the side elevation, window to the front elevation, tiled flooring, sink and drainer unit with a range of wall and base units with work surfaces over, oven, hob, extraction fan and a radiator.

First Floor Landing

With an airing cupboard and a radiator.



Bedroom One

11' 10" x 8' 5" (3.61m x 2.57m)

With a window to the side elevation, carpeting, a storage cupboard and a radiator.

Bedroom Two

8' 11" x 8' 3" (2.72m x 2.51m)

With a window to the carpeting and a radiator.

Bedroom Three

6' 7" x 5' 11" (2.01m x 1.80m)

With a window to the front elevation, carpeting and a radiator.

Bathroom

6' 1" x 5' 11" (1.85m x 1.80m)

With a window to the side elevation, tiled flooring, tiled walls, wash hand basin, bath with shower over, WC and a radiator.

Rear Garden

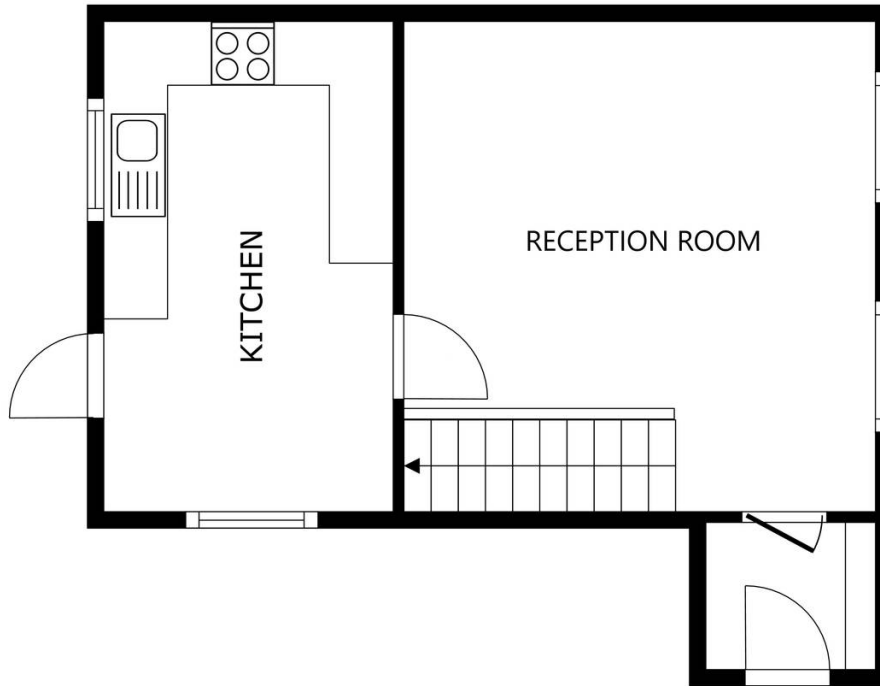
With side gate and kitchen access, slabbed patio seating area and a large lawn area.

Front Garden

With a lawn.

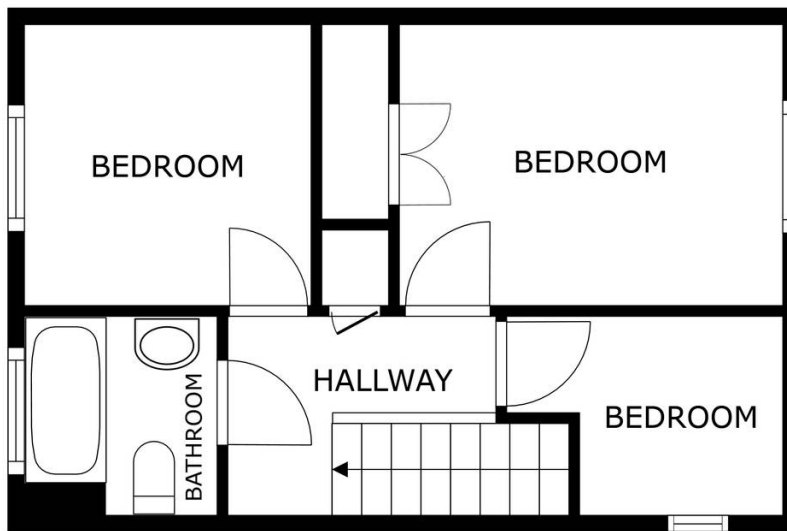
Driveway 1 vehicle

Garage 1 vehicle 16'8" x 8'3". With an up and over door to the front elevation, door to the rear.



FLOOR 1

GROSS INTERNAL AREA
 FLOOR 1 35.9 m² FLOOR 2 32.9 m²
 TOTAL : 68.8 m²
SIZES AND DIMENSIONS ARE APPROXIMATE, ACTUAL MAY VARY.



FLOOR 2

GROSS INTERNAL AREA
 FLOOR 1 35.9 m² FLOOR 2 32.9 m²
 TOTAL : 68.8 m²
SIZES AND DIMENSIONS ARE APPROXIMATE, ACTUAL MAY VARY.



We'll keep you moving...



We must inform all prospective purchasers that the measurements are taken by an electronic take and are provided as a guide only and they should not be used as accurate measurements. We have not tested any mains services, gas or electric appliances, or fixtures and fittings mentioned in these details, therefore, prospective purchasers should satisfy themselves before committing to purchase. Intending purchasers must satisfy themselves by inspection or otherwise to the correctness of the statements contained in these particulars. Knightsbridge Estate Agents (nor any person in their employment) has any authority to make any representation or warranty in relation to the property. The floor plans are not to scale, and are intended for use as a guide to the layout of the property only. They should not be used for any other purpose. We are required by law to conduct anti-money laundering checks on all those selling or buying a property. Whilst we retain responsibility for ensuring checks and any ongoing monitoring are carried out correctly, the initial checks are carried out on our behalf by Lifetime Legal who will contact you once you have agreed to instruct us in your sale or had an offer accepted on a property you wish to buy. The cost of these checks is £60 (incl. VAT), which covers the cost of obtaining relevant data and any manual checks and monitoring which might be required. This fee will need to be paid by you in advance of us publishing your property (in the case of a vendor) or issuing a memorandum of sale (in the case of a buyer), directly to Lifetime Legal, and is non-refundable. We will receive some of the fee taken by Lifetime Legal to compensate for its role in the provision of these checks.