



Honeywell Close, Oadby, Leicester LE2 5QP

Offers in the Region of £185,000

A well presented OVER 55's BUNGALOW in the popular residential suburb of OADBY

Council Tax band: B

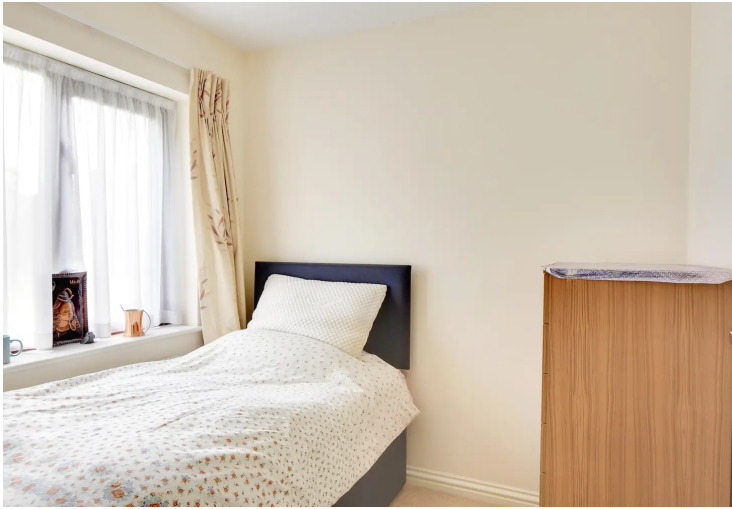
Tenure: Leasehold

EPC Energy Efficiency Rating: C



0116 271 3333





Entrance Hall

With a window to the front elevation, airing cupboard and radiator.

Lounge

13' 10" x 12' 6" (4.22m x 3.81m)

With a window to the rear elevation and a radiator.

Kitchen

10' 5" x 7' 3" (3.18m x 2.21m)

With a window to the rear elevation, storage cupboard, sink and drainer unit with a range of wall and base units with work surfaces over, hob, extraction fan, oven, space for a fridge freezer and space for a washing machine.

Bedroom One

10' 9" x 8' 8" (3.28m x 2.64m)

With a window to the front elevation, built-in wardrobes and a radiator.



Bedroom Two

7' 4" x 7' 4" (2.24m x 2.24m)

With a window to the front elevation and a radiator.

Shower Room

7' 4" x 6' 8" (2.24m x 2.03m)

With a shower cubicle with shower over, wash hand basin, WC, partly tiled walls and a heated chrome towel rail.

Communal Garden

With stunning communal gardens and a patio area.

Parking

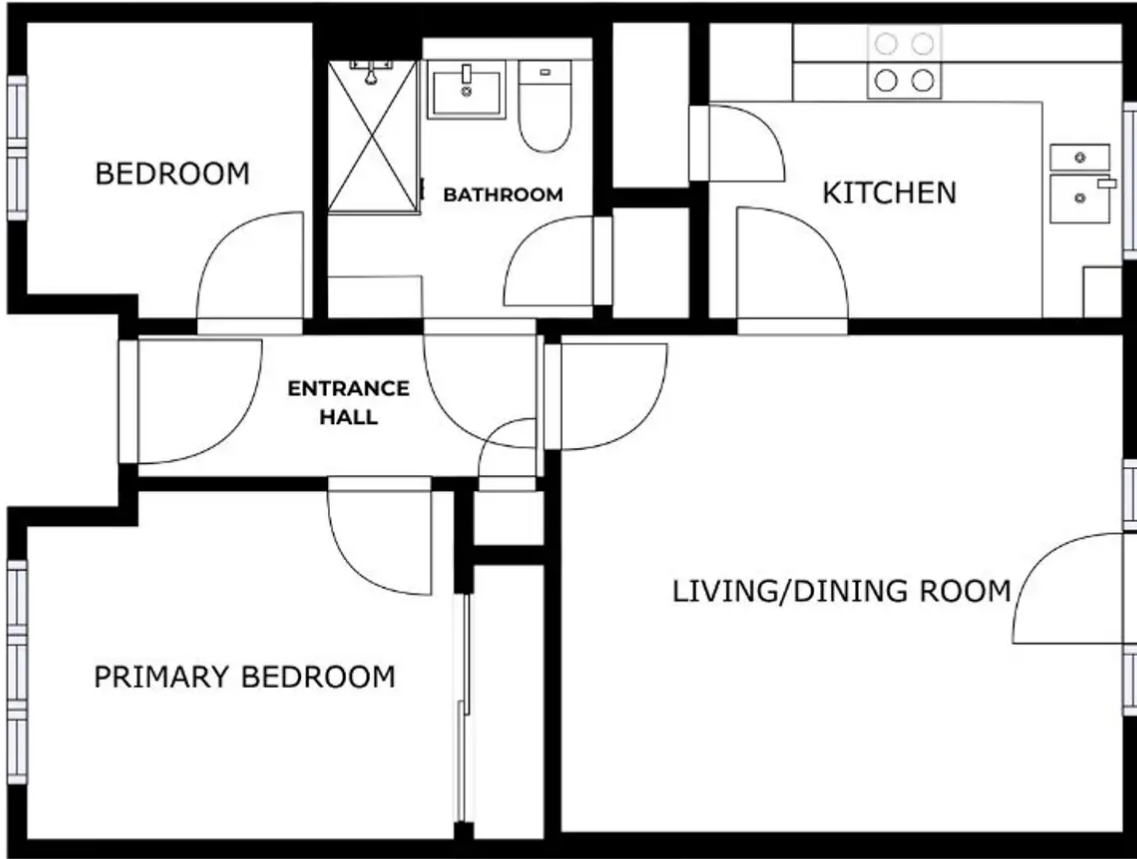
Allocated parking for one vehicle.

Lease information:

Service Charge - per month - £165.81

Ground Rent - per year £150

Lease expiry - 01.04.2130



FLOOR 1

GROSS INTERNAL AREA
FLOOR 1: 50 m²
TOTAL: 50 m²
SIZES AND DIMENSIONS ARE APPROXIMATE, ACTUAL MAY VARY.



We'll keep you moving...



We must inform all prospective purchasers that the measurements are taken by an electronic tape and are provided as a guide only and they should not be used as accurate measurements. We have not tested any mains services, gas or electric appliances, or fixtures and fittings mentioned in these details, therefore, prospective purchasers should satisfy themselves before committing to purchase. Intending purchasers must satisfy themselves by inspection or otherwise to the correctness of the statements contained in these particulars. Knightsbridge Estate Agents & valuers (nor any person in their employment) has any authority to make any representation or warranty in relation to the property. The floor plans are not to scale, and are intended for use as a guide to the layout of the property only. They should not be used for any other purpose. Similarly, the plans are not designed to represent the actual décor found at the property in respect of flooring, wall coverings or fixtures and fittings.