



BROADMEAD COURT BROAD LANE

COVENTRY, CV5 7AE

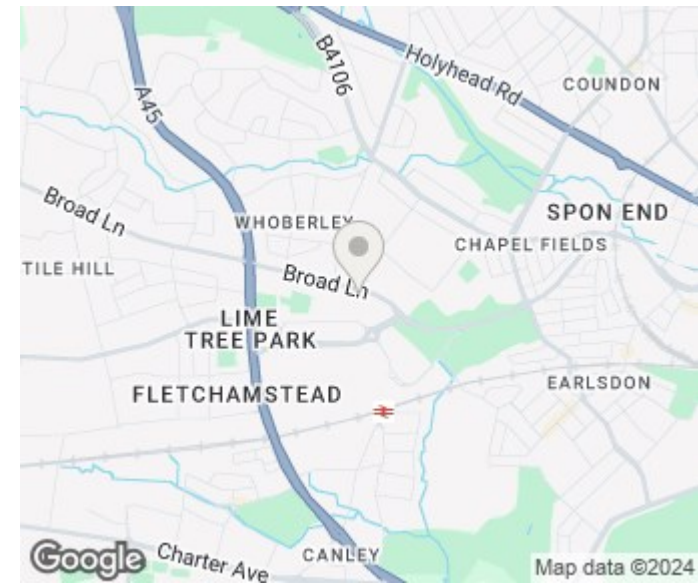
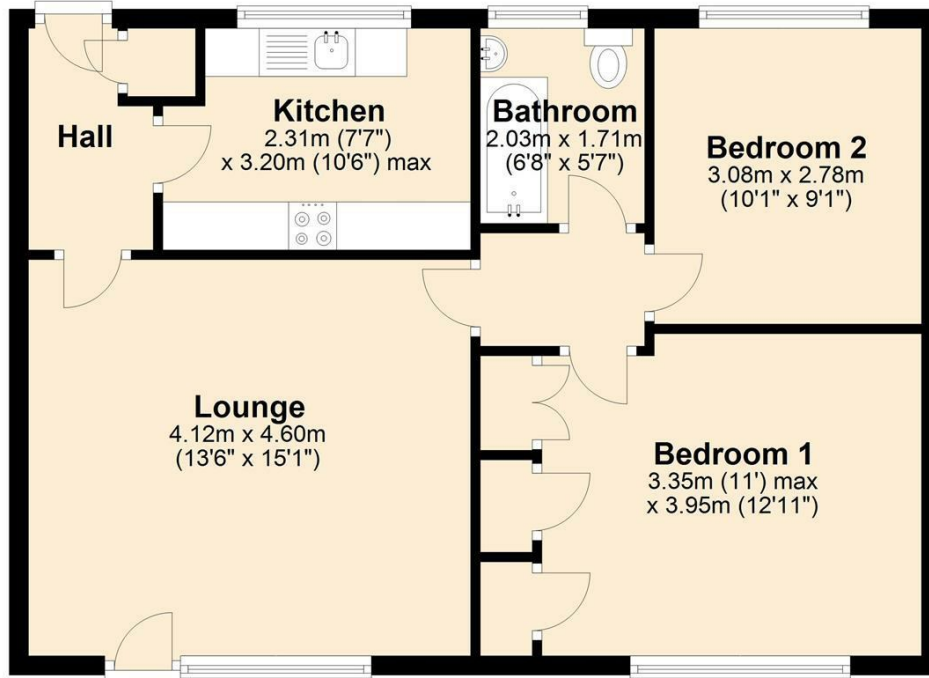
£140,000
LEASEHOLD

TWO DOUBLE BEDROOM FIRST FLOOR APARTMENT / SOUGHT AFTER LOCATION & DEVELOPMENT /
BALCONY / LIVING ROOM / KITCHEN / FITTED BATHROOM / WALKING DISTANCE TO HEARSALL COMMON /
IDEAL FIRST TIME PURCHASE OR INVESTMENT / NO ONWARD CHAIN / GARAGE / INTERNAL VIEWING
RECOMMENDED



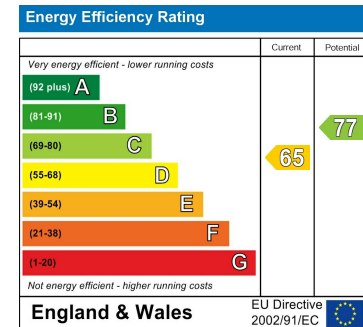
fosterlewis&co
residential property services

Ground Floor



Total area: approx. 60.4 sq. metres (649.8 sq. feet)

Please note: Any measurements displayed are to be used as a guide only.
Plan created by Coventry Property Surveys Ltd Tel: 024 7629 1555
Plan produced using PlanUp.



Agents Note: Whilst every care has been taken to prepare these particulars, they are for guidance purposes only. All measurements are approximate and are for general guidance purposes only and whilst every care has been taken to ensure their accuracy, they should not be relied upon and potential buyers/tenants are advised to recheck the measurements

Coventry Sales
94b Barkers Butts Lane
Coventry
Warwickshire
CV6 1DZ

02476 592929
info@fosterlewisandco.com
www.fosterlewisandco.com



fosterlewis&co
residential property services