



25 OTTERBROOK COURT COVENTRY, CV6 3HF

£140,000
LEASEHOLD

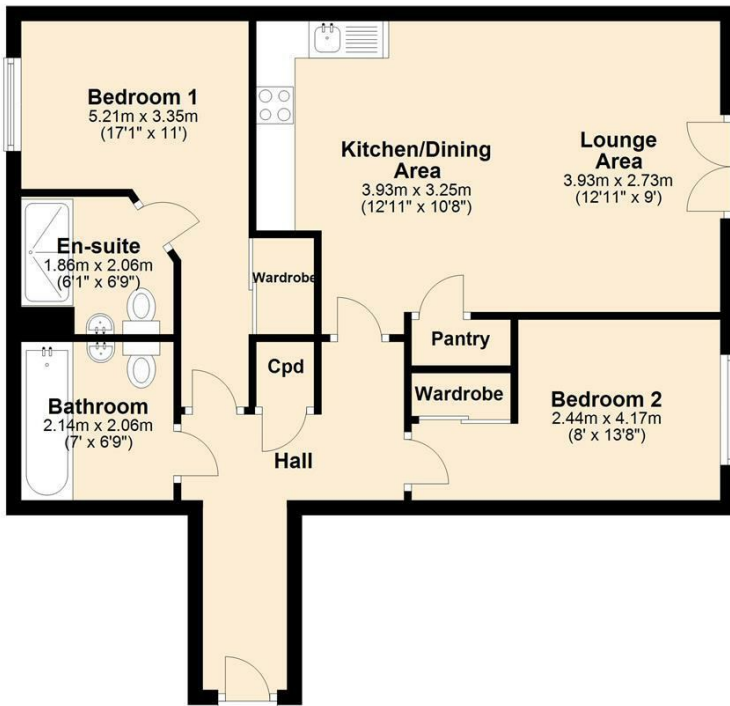
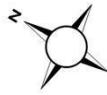
VACANT POSSESSION / OVER 55s ONLY / MODERN TWO BEDROOM FIRST FLOOR APARTMENT / OPEN PLAN LIVING ROOM & KITCHEN / EN SUITE TO MASTER BEDROOM / FIRST FLOOR WITH LIFT ACCESS / LOCAL AMENITIES & BUS ROUTES / MODERN FITTED BATHROOM / ALLOCATED PARKING / EPC RATING : C



fosterlewis&co
residential property services

Ground Floor

Approx. 63.5 sq. metres (683.3 sq. feet)



Total area: approx. 63.5 sq. metres (683.3 sq. feet)

Please note: Any measurements displayed are to be used as a guide only.
 Plan created by Coventry Property Surveys Ltd Tel: 024 7629 1555
 Plan produced using PlanUp.



Energy Efficiency Rating		
	Current	Potential
Very energy efficient - lower running costs		
(92 plus) A		
(81-91) B		
(69-80) C		
(55-68) D		
(39-54) E		
(21-38) F		
(1-20) G		
Not energy efficient - higher running costs		
England & Wales	EU Directive 2002/91/EC	

Agents Note: Whilst every care has been taken to prepare these particulars, they are for guidance purposes only. All measurements are approximate and are for general guidance purposes only and whilst every care has been taken to ensure their accuracy, they should not be relied upon and potential buyers/tenants are advised to recheck the measurements

Coventry Sales
 94b Barkers Butts Lane
 Coventry
 Warwickshire
 CV6 1DZ

02476 592929
 info@fosterlewisandco.com
 www.fosterlewisandco.com



fosterlewis&co
 residential property services