



WELDON HOMES

YOUR TRULY INDEPENDENT ESTATE AGENT

Three Bedroom End Terrace

FOR SALE
£230,000

Munnmoore Close, Kegworth



PROPERTY OVERVIEW

Weldon Homes presents this thoughtfully kept and spacious three-bedroom end-terraced family home, positioned on a generous corner plot in the sought-after village of Kegworth. With a practical layout and ample living space, this property is well suited to families, professionals, first-time buyers, and investors alike. Located within easy reach of excellent local amenities, schools, and strong transport links, this home offers a fantastic opportunity.

On entering, you are welcomed into a bright hallway that leads to the ground floor rooms. The large lounge/diner features a generous bay window to the front, providing ample natural light and plenty of space for both relaxing and dining. A stylish fireplace adds a cozy focal point. The recently fitted kitchen/diner is thoughtfully designed with contemporary grey wall and base units, marble-effect work surfaces, integrated appliances, and ceramic tiled flooring. French doors open out onto the garden, filling the space with light and offering a seamless indoor-outdoor flow. Completing the ground floor is a convenient downstairs W/C. Upstairs, the property boasts three well-proportioned bedrooms. The principal bedroom is a spacious double with a rear aspect, contemporary décor, and an en-suite shower room for added privacy. The second bedroom is another comfortable double, while the third is a generous single bedroom, ideal as a child's room, guest room, or home office. A modern family bathroom, fully tiled with a white suite including a bath, completes the first floor.

Externally, the home benefits from a paved driveway and a large gravelled area offering ample off-road parking. The generous private wraparound garden features a spacious patio perfect for entertaining and a raised lawn with a summer house, ideal for relaxation. Two useful sheds provide extra storage.

HOUSE FEATURES



3 Bedrooms



2 Bathroom



Stylish Kitchen



Living-Room



Garden

CONTACT US NOW

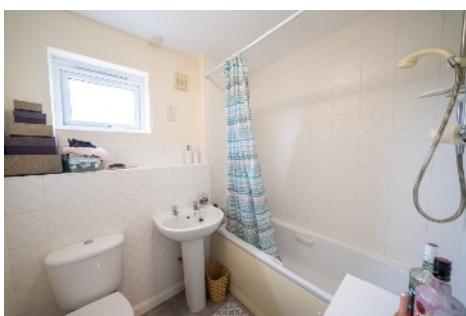
sales@weldonhomes.co.uk

[07720 311451](tel:07720311451)

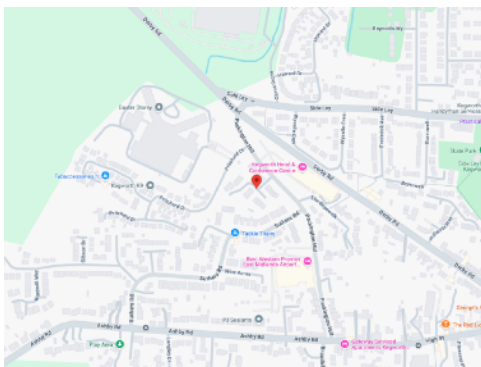
www.weldonhomes.co.uk



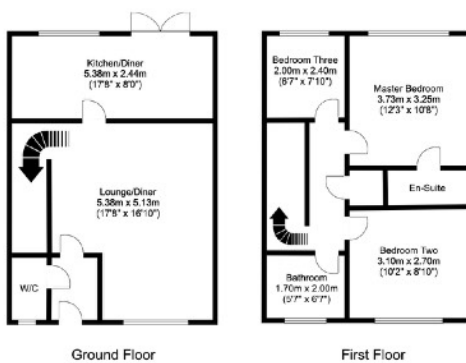
WELDON HOMES
YOUR TRULY INDEPENDENT ESTATE AGENT



LOCATION



FLOORPLAN



EPC

Score	Energy rating	Current	Potential
92+	A		
81-91	B		90 B
69-80	C	78 C	
55-68	D		
39-54	E		
21-38	F		
1-20	G		

CONTACT US NOW

sales@weldonhomes.co.uk

07720 311451

www.weldonhomes.co.uk