



# WELDON HOMES

YOUR TRULY INDEPENDENT ESTATE AGENT



## Three Bedroom Semi - Detached Family Home

### FOR SALE £215,000

Carra Close, Nuneaton



### PROPERTY OVERVIEW

Weldon Homes are delighted to present this immaculately presented three-bedroom semi-detached family home, ideally located on the popular Carra Close in Nuneaton. Offering a superb blend of modern living and practical design, this property is perfectly suited to families, professionals, first-time buyers, or anyone seeking a comfortable and contemporary home. The area benefits from highly regarded schools, a range of local amenities, and excellent transport links, creating a convenient and welcoming environment for residents.

Step inside to discover a well-thought-out interior, starting with a welcoming entrance hallway and useful understairs storage. At the heart of the home is the stunning kitchen/diner, fitted with sleek units, integrated appliances, and plenty of storage. There's also ample space for a dining table, making it a practical and sociable area for everyday living and entertaining. To the rear, the spacious lounge provides a calm and cosy space to unwind, with sliding glass doors opening onto the garden and allowing in plenty of natural light. A downstairs W/C adds further practicality to the ground floor. Upstairs, the property features three well-proportioned bedrooms. The principal bedroom benefits from built-in wardrobes and a stylish en-suite shower room, creating a private and comfortable retreat. The second bedroom is a good-sized double, while the third is a single bedroom offering flexibility as a child's bedroom, guest room, or home office. A modern family bathroom completes the first floor.

Outside, the rear garden is a generous space laid mainly to lawn with a patio area ideal for outdoor dining and relaxation. It's perfect for children to play safely and for entertaining family and friends. To the front, a driveway provides convenient off-street parking for two cars.

### HOUSE FEATURES



3 Bedrooms



2 Bathroom



Stylish Kitchen



Living-Room



Garden

## CONTACT US NOW

[sales@weldonhomes.co.uk](mailto:sales@weldonhomes.co.uk)

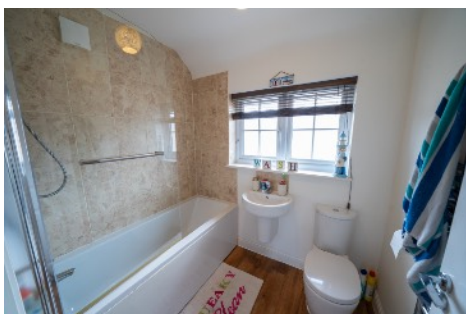
[07720 311451](tel:07720311451)

[www.weldonhomes.co.uk](http://www.weldonhomes.co.uk)





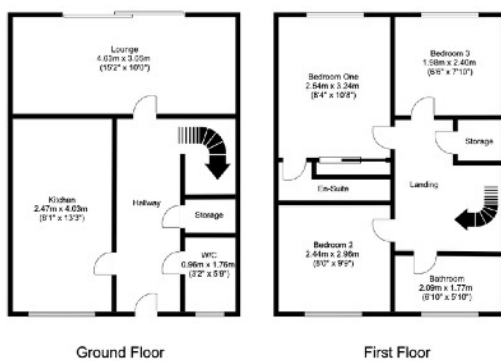
**WELDON HOMES**  
YOUR TRULY INDEPENDENT ESTATE AGENT



## LOCATION



## FLOORPLAN



## EPC



**CONTACT US NOW**



[sales@weldonhomes.co.uk](mailto:sales@weldonhomes.co.uk)



07720 311451



[www.weldonhomes.co.uk](http://www.weldonhomes.co.uk)