



WELDON HOMES

YOUR TRULY INDEPENDENT ESTATE AGENT



Two Bedroom Terrace House

FOR SALE - No Chain
£180,000

Clifford Street, Wigston



PROPERTY OVERVIEW

This two-bedroom bay-fronted mid-terrace property on Clifford Street, South Wigston, is perfect for first-time buyers or investors. Ideally located near Blaby Road's amenities and transport links, the home offers convenience and potential.

The property has been updated with a full rewire and a new boiler, needing only the finishing touches. The ground floor features two spacious reception rooms and a fitted kitchen with access to a brick-built storage shed, offering potential for extension (STPP). Upstairs are two generously sized bedrooms and a bathroom with a fully fitted suite and separate shower.

Outside, there is a private rear garden, ideal for outdoor activities or further development. With excellent links to Wigston town centre, Leicester city, and major retailers nearby, this property is a fantastic opportunity.

HOUSE FEATURES



2 Bedrooms



1 Bathroom



Kitchen



Living-Room



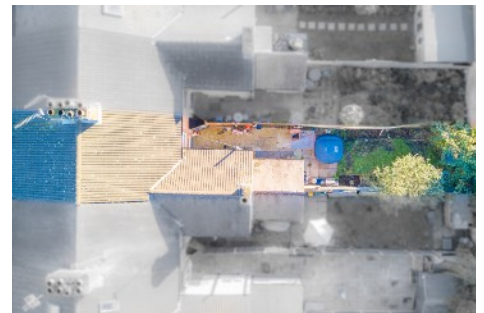
Garden

CONTACT US NOW

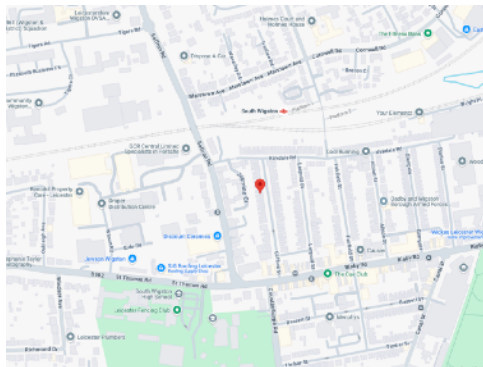
sales@weldonhomes.co.uk

07720 311451

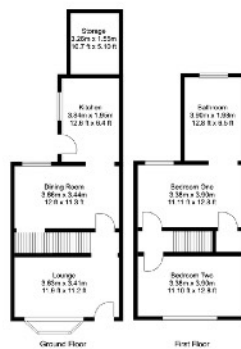
www.weldonhomes.co.uk



LOCATION



FLOORPLAN



EPC

Score	Energy rating	Current	Potential
92+	A		
81-91	B		
69-80	C		75 C
55-68	D		
39-54	E		
21-38	F	37 F	
1-20	G		

—
**WE
WON!**



**BRITISH
PROPERTY
AWARDS**

2024



GOLD WINNER

ESTATE AGENT
IN WIGSTON