



WELDON HOMES

YOUR TRULY INDEPENDENT ESTATE AGENT



Three Bedroom
Extended Mid-Terrace
House

FOR SALE
£260,000

Flatholme Road, Netherhall



PROPERTY OVERVIEW

Weldon Homes presents a beautifully extended three-bedroom mid-terraced property on Flatholme Road in Leicester's Netherhall area.

Conveniently located near amenities and Scraftoft Valley Primary School, this home is perfect for families.

The ground floor features a spacious living room and open plan kitchen/diner. Upstairs, find two double bedrooms, a single bedroom, and a modern bathroom. Enjoy the private rear garden with artificial grass and a double driveway.

Do not miss this opportunity for family-friendly living in a sought-after location.

HOUSE FEATURES



3 Bedrooms



1 Bathroom



Kitchen



Living-Room



Garden

CONTACT US NOW

sales@weldonhomes.co.uk

07720 311451

www.weldonhomes.co.uk



WELDON HOMES

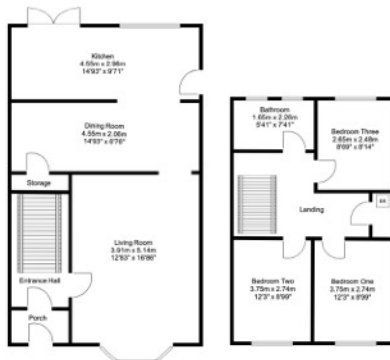
YOUR TRULY INDEPENDENT ESTATE AGENT



LOCATION



FLOORPLAN



EPC

Score	Energy rating	Current	Potential
92+	A		
81-91	B		84 B
69-80	C	70 C	
55-68	D		
39-54	E		
21-38	F		
1-20	G		

CONTACT US NOW

sales@weldonhomes.co.uk

07720 311451

www.weldonhomes.co.uk