



WELDON HOMES

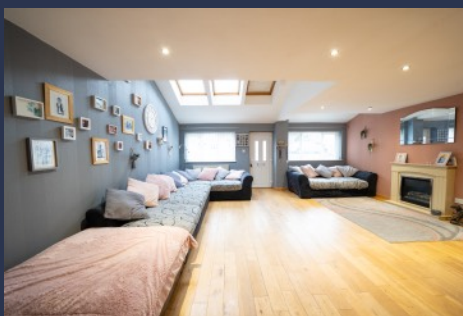
YOUR TRULY INDEPENDENT ESTATE AGENT



Three Bedroom
Semi-Detached
Family Home

FOR SALE
£285,000

Hudson Close, Leicester



PROPERTY OVERVIEW

Presenting an impeccably designed three-bedroom property in the Groby Road area, this residence harmoniously combines style and functionality for those seeking contemporary living.

The entrance leads to a spacious lounge, extended and converted into an inviting space flooded with natural light through Velux windows, creating an open and airy atmosphere. The kitchen overlooks the landscaped garden, adding a touch of sophistication.

Upstairs, three double bedrooms, including a cosy haven and spacious options, cater to diverse needs. The modern bathroom, with a bath and waterfall shower, elevates the properties luxury.

Externally, a front paved driveway and a rear enclosed landscaped garden offer convenience and outdoor leisure. Key features include double glazing, gas central heating, and proximity to Glenfield Hospital and Stokes Wood Primary School, making it an ideal family home.

This property, with meticulous attention to design and functionality, is a standout choice for contemporary, comfortable living. An early viewing is recommended to grasp the unique charm of this Groby Road gem.

HOUSE FEATURES



3 Bedrooms



1 Bathroom



Stylish Kitchen



Living-Room



Large Driveway



Garden

CONTACT US NOW

sales@weldonhomes.co.uk

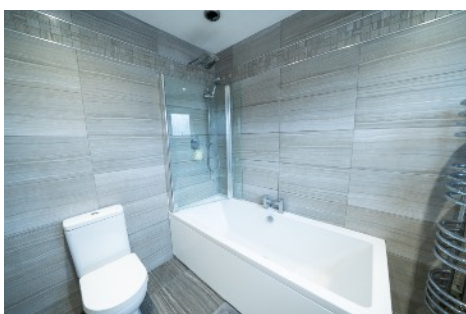
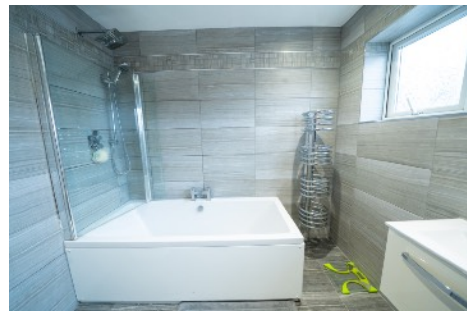
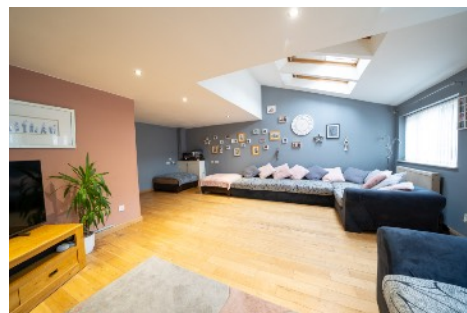
07720 311451

www.weldonhomes.co.uk



WELDON HOMES

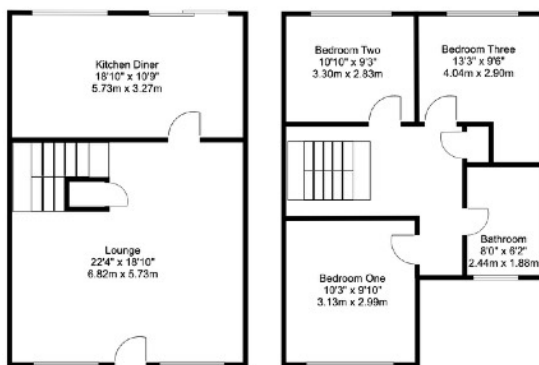
YOUR TRULY INDEPENDENT ESTATE AGENT



LOCATION

FLOORPLAN

EPC



Score	Energy rating	Current	Potential
92+	A		
81-91	B		81 B
69-80	C	69 C	
55-68	D		
39-54	E		
21-38	F		
1-20	G		

CONTACT US NOW

sales@weldonhomes.co.uk

07720 311451

www.weldonhomes.co.uk