



# J&D ESTATE AGENTS

SALES | LETTINGS | MANAGEMENT



**103 Crescent Road, Walton, L9 2AW**

**Asking price £195,000**

Welcome to this charming 3-bedroom semi-detached modern build property located on Crescent Road in the sought-after area of Walton.

Upon entering, you are greeted by a spacious reception room, perfect for entertaining guests or relaxing with family. The property boasts three well-appointed bedrooms, including a master bedroom with its own ensuite for added convenience and privacy.

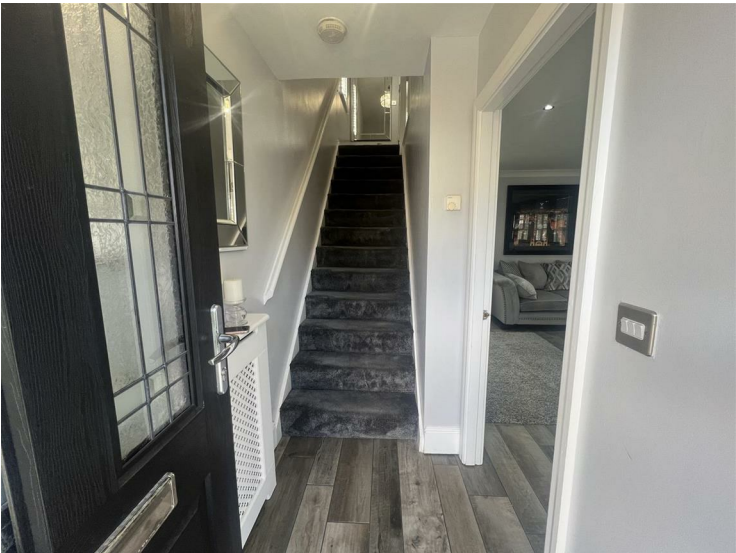
One of the highlights of this property is the beautifully landscaped gardens, providing a tranquil outdoor space to enjoy the fresh air and sunshine. Additionally, the off-road parking ensures that you never have to worry about finding a space for your vehicle.

Built in 2003, this house offers a modern feel with a new fitted kitchen, ideal for whipping up delicious meals for your loved ones. With a total of 926 sq ft of living space, there is plenty of room for everyone to spread out and make this house a home.

Don't miss out on the opportunity to own this lovely property in a desirable location. Contact us today to arrange a viewing and take the first step towards making this house your new home.



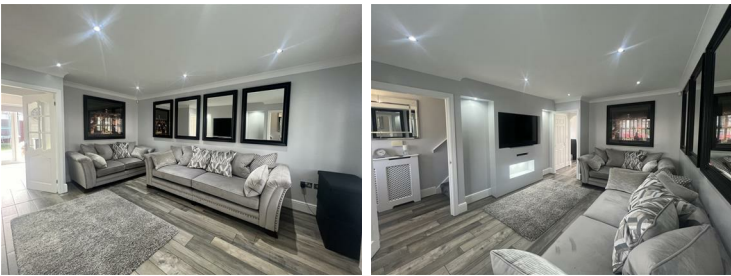
Entrance Hall



Dining Area



Lounge



Garden



Kitchen



Patio





Bedroom 1



Bedroom 3



Ensuite



Bathroom



Bedroom 2

