



The Manse

Chester-le-street DH3 3TG

£275,000





This footer paragraph is an example only and should not be relied upon as complying with current legislation. These particulars, whilst believed to be accurate are set out as a general outline only for guidance and do not constitute any part of an offer or contract. Intending purchasers should not rely on them as statements of representation of fact, but must satisfy themselves by inspection or otherwise as to their accuracy. No person in this firm's employment has the authority to make or give any representation or warranty in respect of the property.

The Manse

Chester-le-street DH3 3TG



Nestled in the charming town of Chester-le-Street, The Manse presents an exceptional opportunity for those seeking a spacious and elegant townhouse. This delightful property boasts two inviting reception rooms, perfect for both entertaining guests and enjoying quiet family evenings. With four well-proportioned bedrooms, there is ample space for a growing family or for those who simply desire extra room for guests or a home office.

The layout of the house is thoughtfully designed, allowing for a harmonious flow between the living spaces with comfortable lounge, fitted kitchen/dining room with appliances and a ground floor wc. Three further good sized bedrooms and a family bathroom/wc to the first floor and a master bedroom with en suite and walk in dressing room which is fabulous for shoes!!.

For those with vehicles, the property includes parking for two vehicle, a valuable asset in this bustling area. The location offers easy access to local amenities, schools, and transport links, making it an ideal choice for families and professionals alike.

In summary, The Manse is a splendid townhouse that

combines space, comfort, and modern living in the heart of Chester-le-Street. This property is not to be missed for anyone looking to make a new home in a vibrant community.

Freehold
Council tax band D
EPC rating - C

ENTRANCE HALL

LOUNGE

17'8" x 12'2" (5.38 x 3.71)

KITCHEN/DINING AREA

19'2" x 11'5" (5.84 x 3.48)

GROUND FLOOR WC

FIRST FLOOR LANDING

BEDROOM

12'1" x 8'8" (plus bay) (3.68 x 2.64 (plus bay))

FAMILY BATHROOM/WC

BEDROOM

12'0" x 11'4" (3.66 x 3.45)

BEDROOM

11'4" x 6'5" (3.45 x 1.96)

SECOND FLOOR LANDING

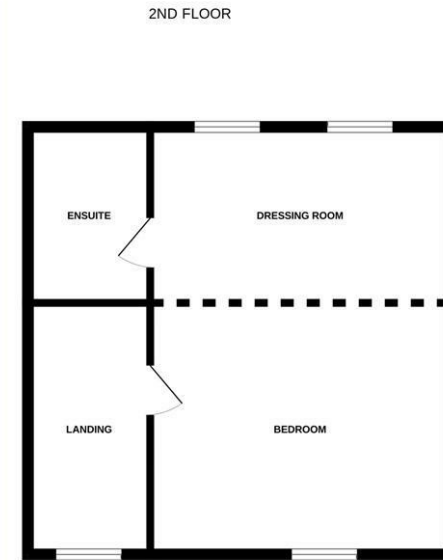
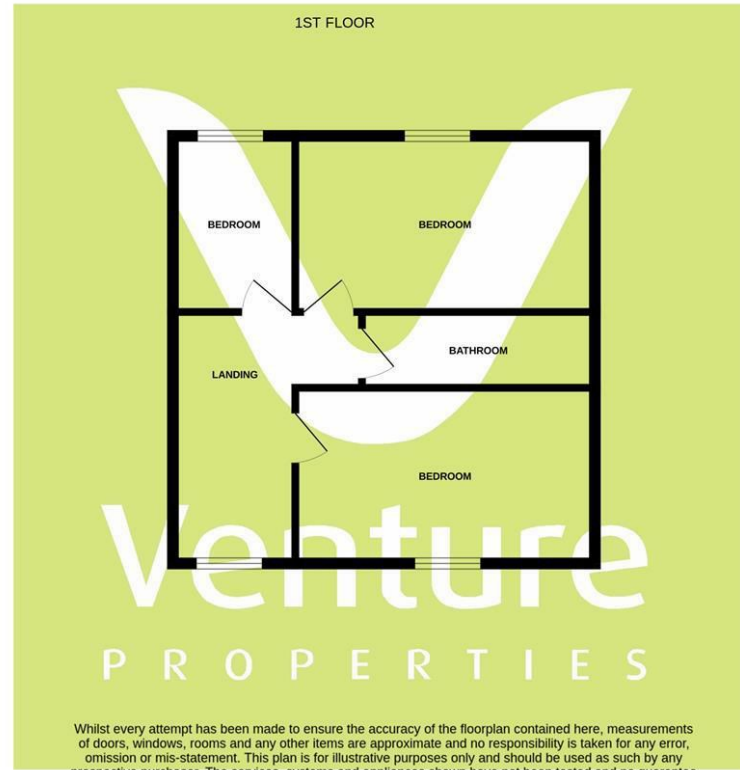
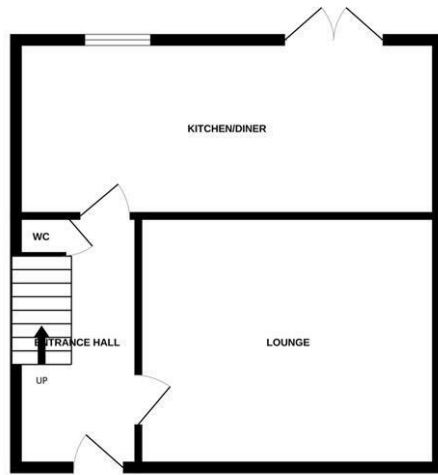
MAIN SUITE

24'8" x 12'4" (7.52 x 3.76)

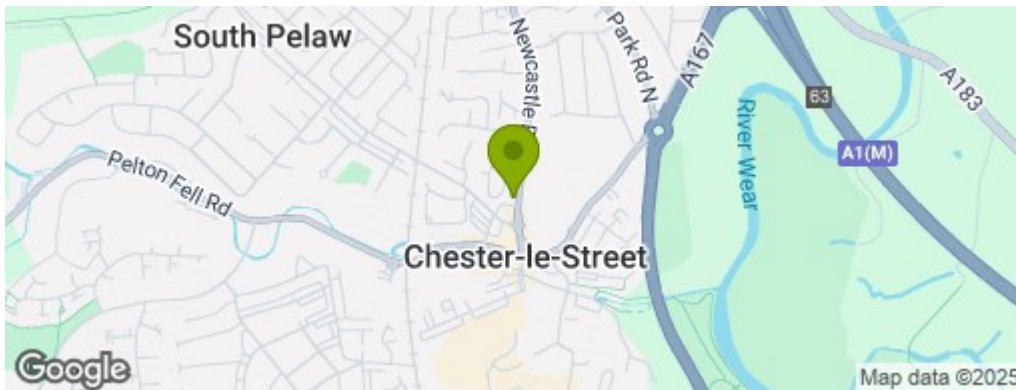
DRESSING ROOM

EN SUITE

OUTSIDE



Whilst every attempt has been made to ensure the accuracy of the floorplan contained here, measurements of doors, windows, rooms and any other items are approximate and no responsibility is taken for any error, omission or mis-statement. This plan is for illustrative purposes only and should be used as such by any prospective purchaser. The services, systems and appliances shown have not been tested and no guarantee as to their operability or efficiency can be given.
Made with Metropix ©2024



Property Information

0191 372 9898

Suite 6, 15 North Burns, Chester-le-Street, County Durham, DH3 3TF
sales.cls@venturepropertiesuk.com