



Temperley Way

Durham DH7 6FH

£274,950





This footer paragraph is an example only and should not be relied upon as complying with current legislation. These particulars, whilst believed to be accurate are set out as a general outline only for guidance and do not constitute any part of an offer or contract. Intending purchasers should not rely on them as statements of representation of fact, but must satisfy themselves by inspection or otherwise as to their accuracy. No person in this firm's employment has the authority to make or give any representation or warranty in respect of the property.

Temperley Way

Durham DH7 6FH



FREEHOLD, IMMACULATEDLY PRESENTED "WINSTER" STYLE, FIVE BEDROOM HOME situated on this NEWLY ESTABLISHED DEVELOPMENT in Sacriston. This property offers GENEROUS QUANTITIES OF LIVING ACCOMMODATION via LOUNGE, SEPARATE FITTED KITCHEN/DINING ROOM with built in appliances, UTILITY and GROUND FLOOR WC. To the first floor there is a MAIN BEDROOM with EN SUITE FACILITIES, THREE FURTHER DOUBLE BEDROOMS, a SINGLE BEDROOM and a FITTED WHITE FAMILY BATHROOM/WC WITH SHOWER. SINGLE GARAGE, DRIVEWAY and GARDENS to front and rear. The property also benefits from GAS CENTRAL HEATING VIA RADIATORS and UPVC DOUBLE GLAZED WINDOWS/FRENCH DOORS. A MUST TO VIEW, call 0191 3729898 to appreciate and secure.

EPC rating B
Council tax band D

ENTRANCE HALL

LOUNGE

15'4" x 10'8" (4.67m x 3.25m)

KITCHEN/DINING ROOM

25'9" x 9'10" (7.85m x 3.00m)

UTILITY

GROUND FLOOR WC

FIRST FLOOR LANDING

MAIN BEDROOM

13'6" x 10'7" (4.11m x 3.23m)

EN SUITE

BEDROOM 2

11'9" x 10' (3.58m x 3.05m)

BEDROOM 3

11'5" x 10'8" (3.48m x 3.25m)

BEDROOM 4

10'2" x 9'3" (3.10m x 2.82m)

BEDROOM 5

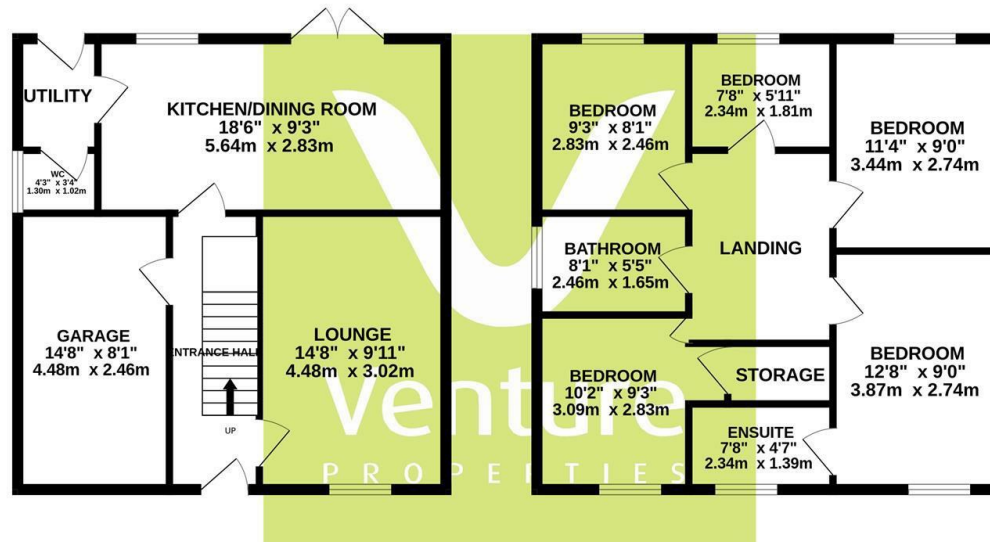
7'2" x 7' (2.18m x 2.13m)

BATHROOM/WC/SHOWER

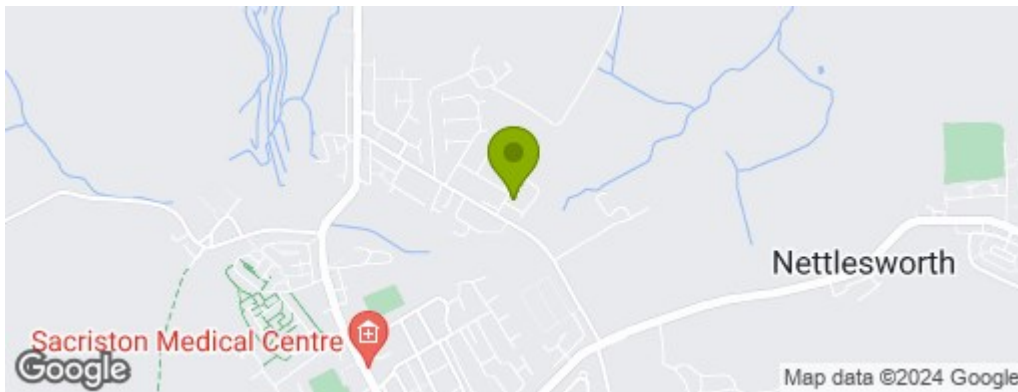
OUTSIDE

GARAGE

www.venturepropertiesuk.com



Whilst every attempt has been made to ensure the accuracy of the floorplan contained here, measurements of doors, windows, rooms and any other items are approximate and no responsibility is taken for any error, omission or mis-statement. This plan is for illustrative purposes only and should be used as such by any prospective purchaser. The services, systems and appliances shown have not been tested and no guarantee as to their operability or efficiency can be given.
 Made with Metroplan ©2024



Property Information

0191 372 9898

Suite 6, 15 North Burns, Chester-le-Street, County Durham, DH3 3TF
sales.cls@venturepropertiesuk.com