



Mowbray Road, Cambridge, CB1 7SS

CHEFFINS

Mowbray Road

Cambridge,
CB1 7SS

SINGLE ROOM WITH BILLS INCLUDED. A first floor room to let within this well presented semi detached house comprising 4 rooms with a maximum occupancy of 7 persons in a convenient south city location. The accommodation comprises single bedroom (single occupancy only). Shared kitchen, shared shower room and laundry facilities and communal gardens. Bills included. Furnished. No Parking. Available NOW. EPC: D and Council Tax Band: N/A.

LOCATION

Located within the Queen Edith's ward of Cambridge and off Queen Edith's Way the property is most convenient for access to Addenbrooke's Hospital (0.5 miles). The property is also well placed for access to Cambridge Train Station and the CB1 Business District (1.5 miles) and Cambridge city centre (1.8 miles). A range of local amenities can be found nearby. (distances approximate)



£650 PCM





ENTRANCE HALL

stairs rising to first floor, door to bedroom 1 and door to:

COMMUNAL KITCHEN/BREAKFAST ROOM

kitchen area fitted with base and wall units, work tops, sink, integrated appliances including oven, combination microwave oven, ceramic hob with extractor above and dishwasher, American style fridge freezer, under stairs cupboard housing gas central heating boiler, further cupboard housing hot water cylinder, window and door to side aspect with access to garden, door to WC and open to breakfast room with patio doors to rear garden, breakfast bar with bar stools, fitted cupboards and built in cupboard housing washing machine and tumble dryer.

WC

wc, wash basin with vanity unit below and window to rear aspect above and wall mirror.

STAIRS/LANDING

window to side aspect and doors to bedrooms 2, 3 & 4 and shower room.

BEDROOM 4

Window to front aspect. Furniture includes single bed with base drawers and built in wardrobe.

COMMUNAL SHOWER ROOM

walk in shower with glass shower screen, wc, wash basin with vanity unit below, wall mirror, heated towel rail and window to rear aspect.

COMMUNAL GARDEN

front garden principally gravelled, with path to front door and side gate to enclosed rear garden principally laid to lawn with patio, mature shrubs and sheds.

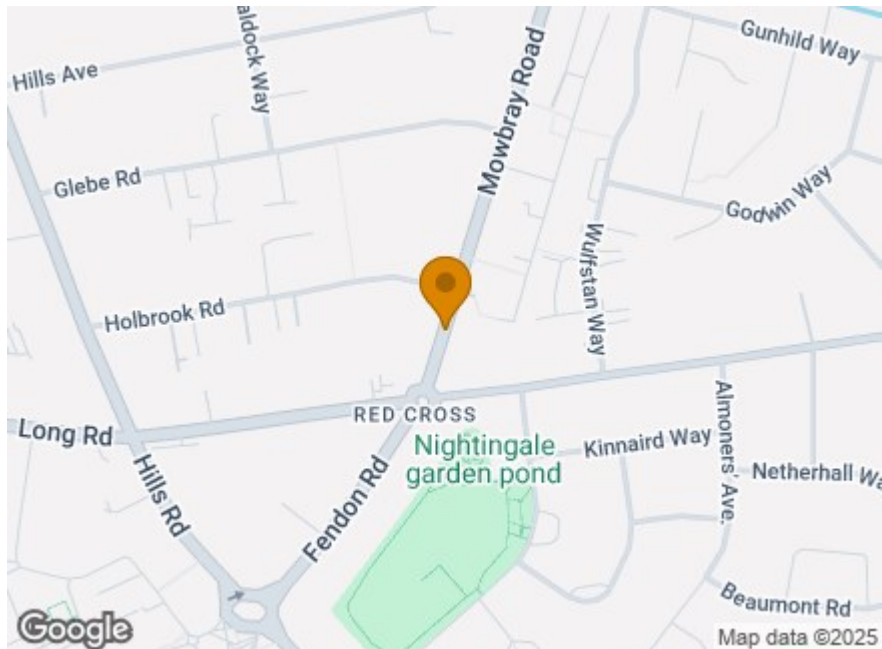
LETTING AGENT NOTES

For more information on this property please refer to the Material Information brochure on our Website.

Term - Minimum 6 month tenancy

Holding Deposit - £150

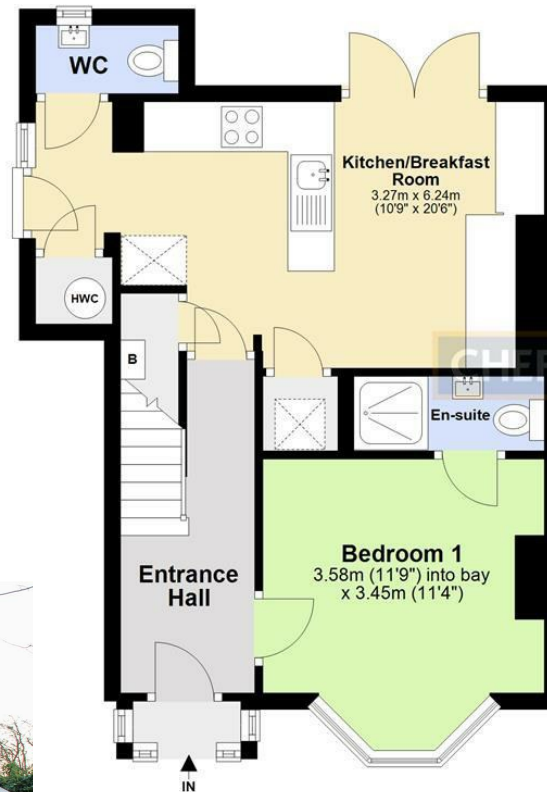
Deposit - £750



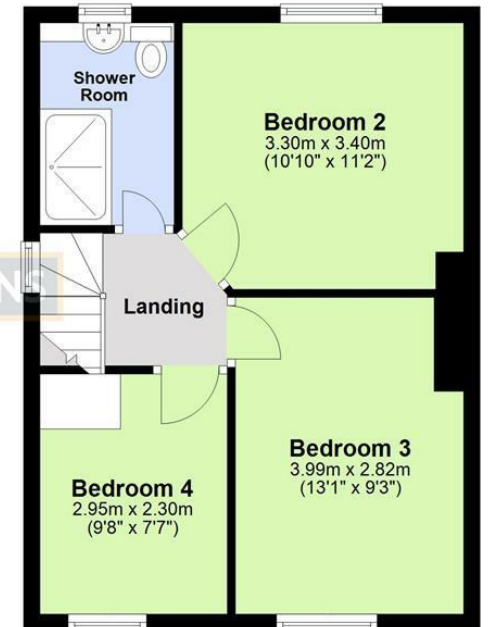
Energy Efficiency Rating	
Very energy efficient - lower running costs	Current Potential
(92 plus) A	
(81-91) B	
(69-80) C	
(55-68) D	
(39-54) E	
(21-38) F	
(1-20) G	
Not energy efficient - higher running costs	
England & Wales	EU Directive 2002/91/EC



Ground Floor
Approx. 43.4 sq. metres (466.7 sq. feet)



First Floor
Approx. 38.2 sq. metres (411.2 sq. feet)



Total area: approx. 81.6 sq. metres (877.9 sq. feet)

Note: Not to scale - For guidance purposes only

Plan produced using PlanUp.

Clifton House, 1-2 Clifton Road, Cambridge, Cambridgeshire, CB1 7EA | 01223 271916 | cheffins.co.uk

IMPORTANT: we would like to inform prospective purchasers that these sales particulars have been prepared as a general guide only. A detailed survey has not been carried out, nor the services, appliances and fittings tested. Room sizes should not be relied upon for furnishing purposes and are approximate. If floor plans are included, they are for guidance only and illustration purposes only and may not be to scale. If there are any important matters likely to affect your decision to buy, please contact us before viewing the property.

