



Room 4, East Road, Cambridge, CB1 1DB

**CHEFFINS**



## East Road

Cambridge,  
CB1 1DB

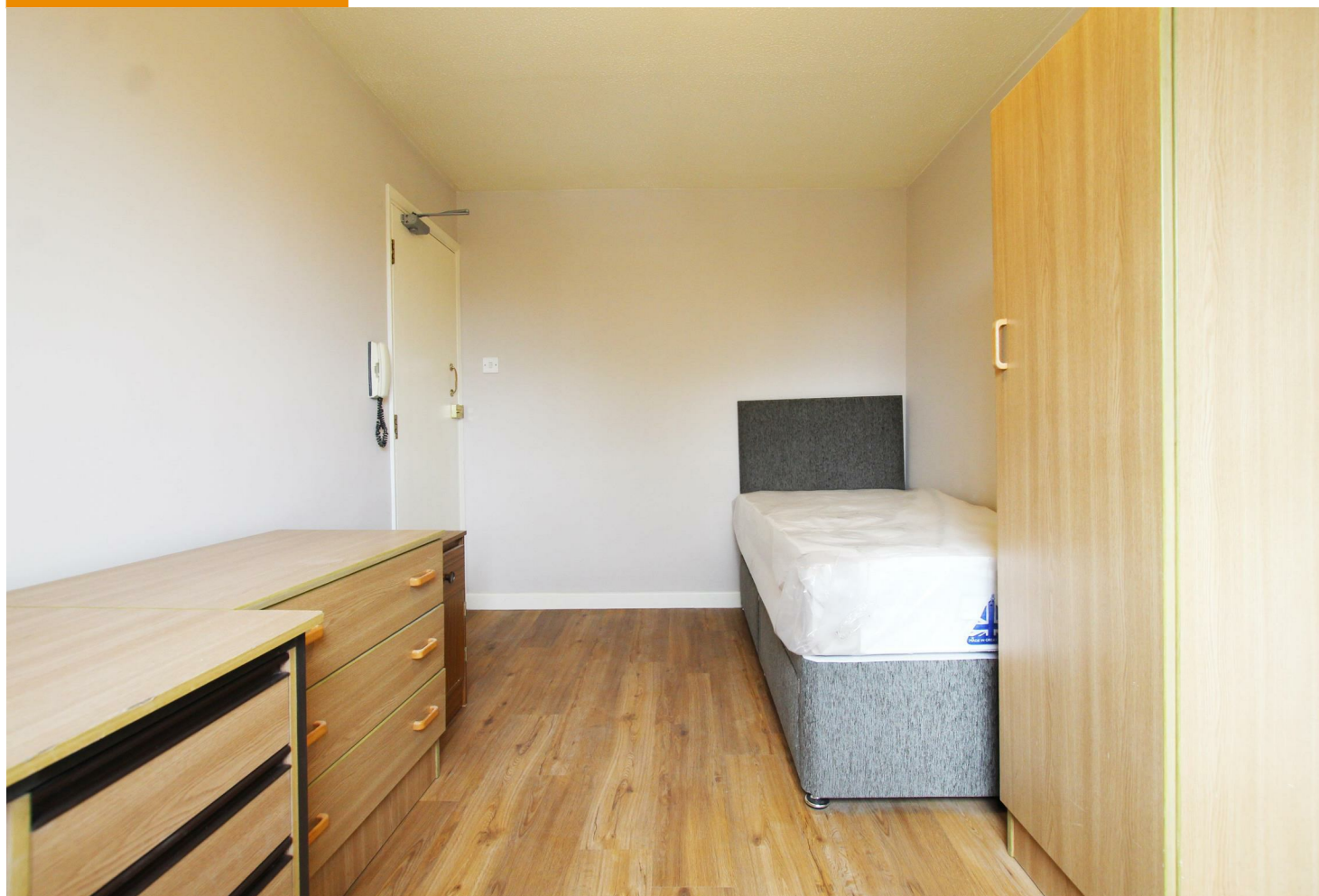
**\*STUDENTS ONLY\*** A second floor student room with utilities included within this purpose built accommodation block comprising 8 rooms. The accommodation comprises 2nd floor bedroom with single bed, desk, wardrobe and bedside table. Shared shower room and kitchen facilities. Utility bills inclusive of rent excluding WIFI. Furnished. Available NOW. EPC: E and Council Tax Band: N/A.

### LOCATION

East Road is located within the Market ward of Cambridge and the property is positioned most conveniently for access to Anglia Ruskin University (0.2 miles). A wide range of local amenities can be found in the Grafton Centre and popular Mill Road nearby and the property is also well placed for access to Cambridge railway station approximately (1.0 miles) and the historic city centre via Parker's Piece (0.5 miles). (Distances approximate).

 1  0  0

**£595 PCM**





## BEDROOM

with window to front aspect. Furniture includes single bed, bedside table, desk with chair, wardrobe and chest of drawers.

## LETTING AGENT NOTES

For more information on this property please refer to the Material Information brochure on our Website.

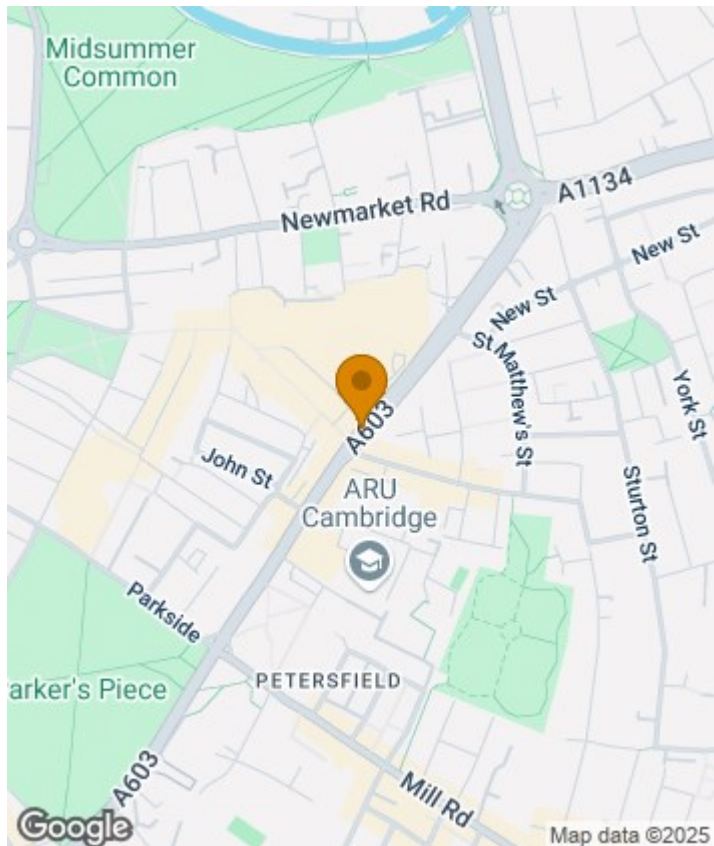
Term - Minimum 6 month tenancy

Holding Deposit - £135

Deposit - £686



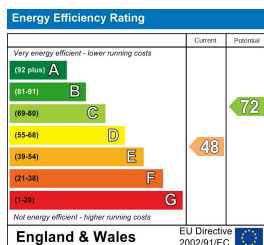




#### Rooms, East Road Cambridge



Total Area: 160.3 m<sup>2</sup> ... 1726 ft<sup>2</sup>  
All measurements are approximate and for display purposes only  
Plans prepared by: charlesjharrison.co.uk



Clifton House, 1-2 Clifton Road, Cambridge, Cambridgeshire, CB1 7EA | 01223 271916 | cheffins.co.uk



**CHEFFINS**

IMPORTANT: we would like to inform prospective purchasers that these sales particulars have been prepared as a general guide only. A detailed survey has not been carried out, nor the services, appliances and fittings tested. Room sizes should not be relied upon for furnishing purposes and are approximate. If floor plans are included, they are for guidance only and illustration purposes only and may not be to scale. If there are any important matters likely to affect your decision to buy, please contact us before viewing the property.