



Seekings Close, Trumpington, Cambridge, CB2 9DJ



Seekings Close

Trumpington, Cambridge,
CB2 9DJ

- Minimum 12 Month Tenancy
- Available Now
- Part Furnished
- EPC: B
- Council Tax Band: D
- Gas Central Heating
- Wrap Around Balcony
- Secure Allocated Parking

A modern 2 bedroom 1st floor apartment forming part of the popular and select Aura Development off Long Road. The accommodation finished to a high specification comprises entrance hall, open plan living room with modern fitted kitchen and wrap around balcony off, principle bedroom with en-suite shower room, further double bedroom and bathroom. Secure allocated parking. We regret no pets or sharers. Part furnished or unfurnished. Available now. EPC: B and Council Tax Band: D.

2 2 1

£1,950 PCM





LOCATION

Seekings Close is located in the Aura development off Long Road positioned between Trumpington Road and Hills Road approximately 2.5 miles south of the historic city centre. The property is well located for access to Addenbrookes Hospital and bio-medical research campus and Cambridge railway station via the Guided Busway and cycle path. Schools in both the state and independent sectors and access to the M11/A10 are in close vicinity too.

ENTRANCE HALL

built in cupboard housing hot water cylinder, doors to bathroom, bedrooms, and inner hallway off and furniture comprising console table and wall mirror.

INNER HALLWAY

opening to:

OPEN PLAN LIVING ROOM/KITCHEN

kitchen area fitted with base and wall units, work tops, sink and integrated appliances including oven, microwave combination oven, electric hob with extractor above, fridge freezer, dishwasher and washer dryer, window to side aspect and open to living area with corner window with sliding patio door and further glazed door with access to wrap around balcony. Furniture comprises sofa, arm chair, coffee table, shelving units and dining table with chairs.

BALCONY

wrap around balcony with timber decking, railings and bistro set.

BEDROOM 1

wall to wall fitted wardrobes with clothes rails and shelving, window to rear aspect, door to en-suite shower room and furniture comprising double bed.

EN-SUITE SHOWER ROOM

shower enclosure, wc and wash basin with mirrored cabinet above and heated towel rail.

BEDROOM 2

window to rear aspect and furniture comprising chest of drawers, 2 bedside cabinets and clothes rail.

BATHROOM

shower over bath with glass screen, wc and wash basin with mirror above and heated towel rail.

PARKING

allocated parking space with secure gated undercroft car park.

LETTING AGENT NOTES

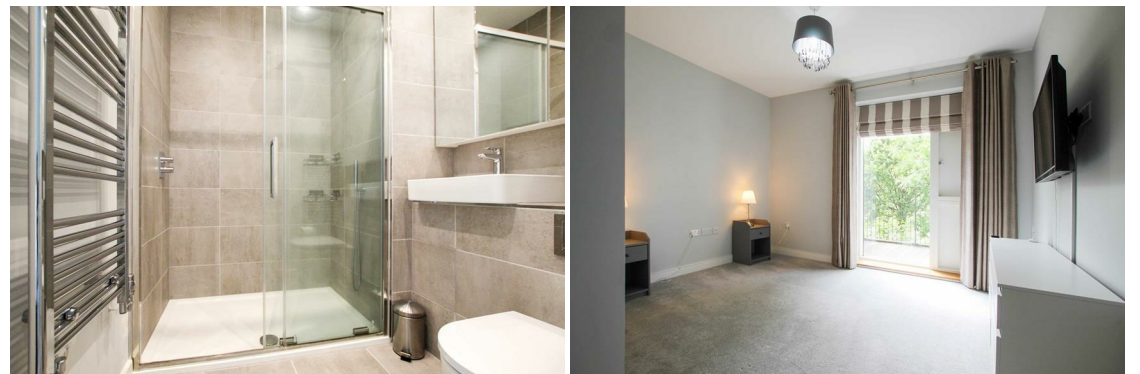
For more information on this property please refer to the Material Information brochure on our Website.

Term - Minimum 12 month tenancy

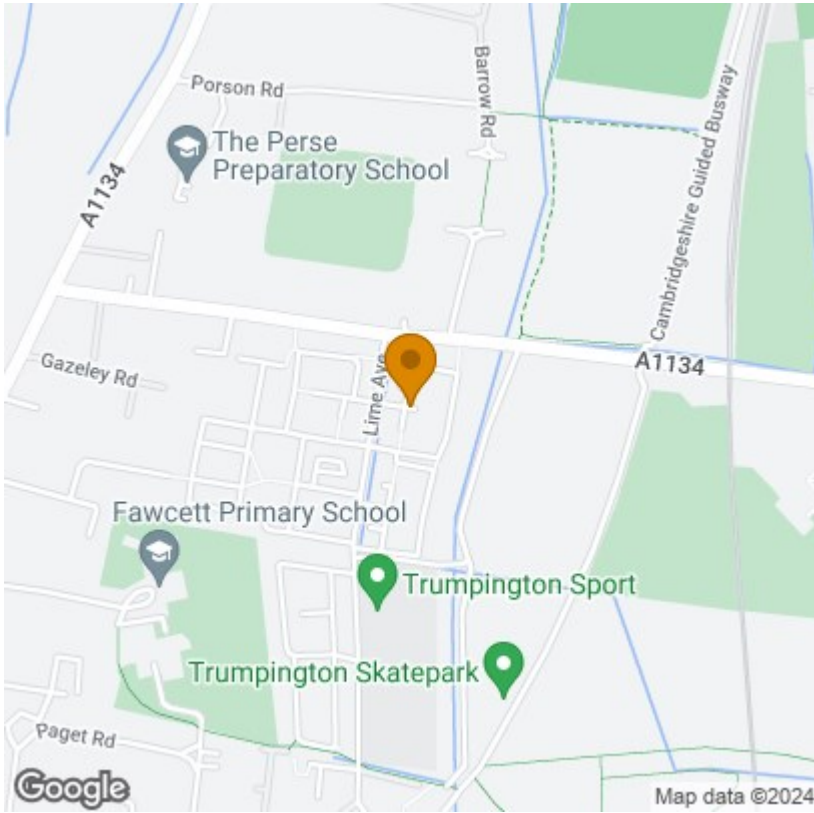
Holding Deposit - £450

Deposit - £2250

Furniture - The selected applicant will have the option to request for all or some of the furniture to be removed. The Landlord will not be providing additional furniture.

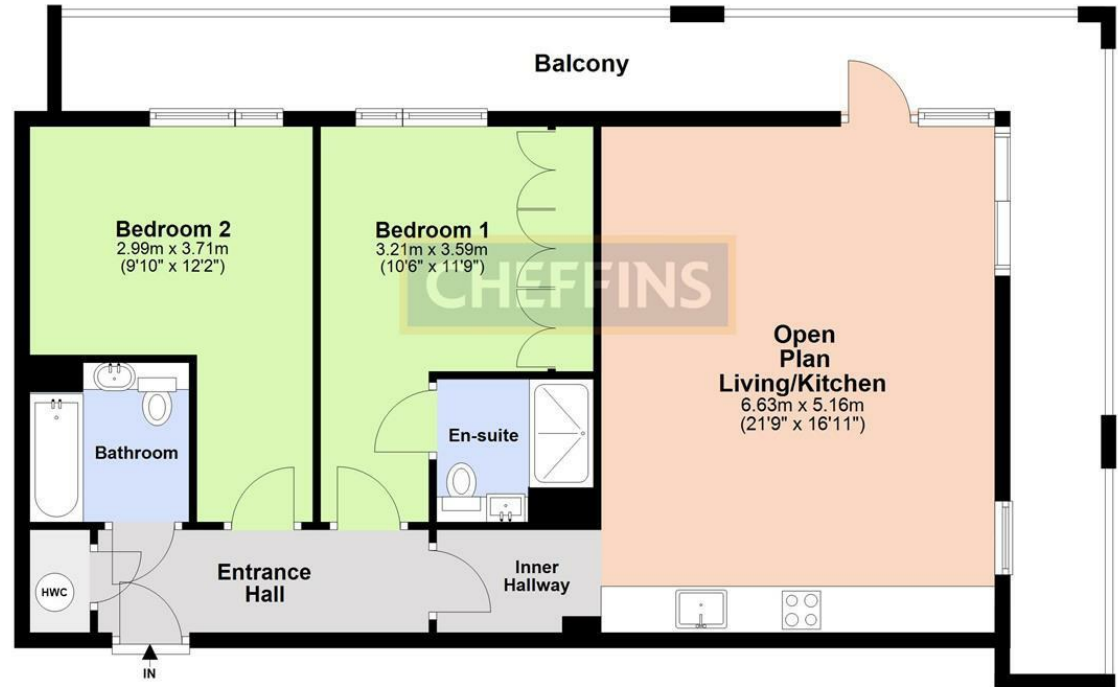






Energy Efficiency Rating		Current	Potential
Very energy efficient - lower running costs			
(92 plus) A		83	83
(81-91) B			
(69-80) C			
(55-68) D			
(39-54) E			
(21-38) F			
(1-20) G			
Not energy efficient - higher running costs			
England & Wales	EU Directive 2002/91/EC		

First Floor
Approx. 83.9 sq. metres (902.9 sq. feet)



Total area: approx. 83.9 sq. metres (902.9 sq. feet)

Note: Not to scale - For guidance purposes only

Plan produced using PlanUp.

Clifton House, 1-2 Clifton Road, Cambridge, Cambridgeshire, CB1 7EA | 01223 271916 | cheffins.co.uk



IMPORTANT: we would like to inform prospective purchasers that these sales particulars have been prepared as a general guide only. A detailed survey has not been carried out, nor the services, appliances and fittings tested. Room sizes should not be relied upon for furnishing purposes and are approximate. If floor plans are included, they are for guidance only and illustration purposes only and may not be to scale. If there are any important matters likely to affect your decision to buy, please contact us before viewing the property.