



## Flat 24, 3 The Maltings Wetmore Road, Burton-On-Trent

Burton-On-Trent

Offers in Region of £139,000



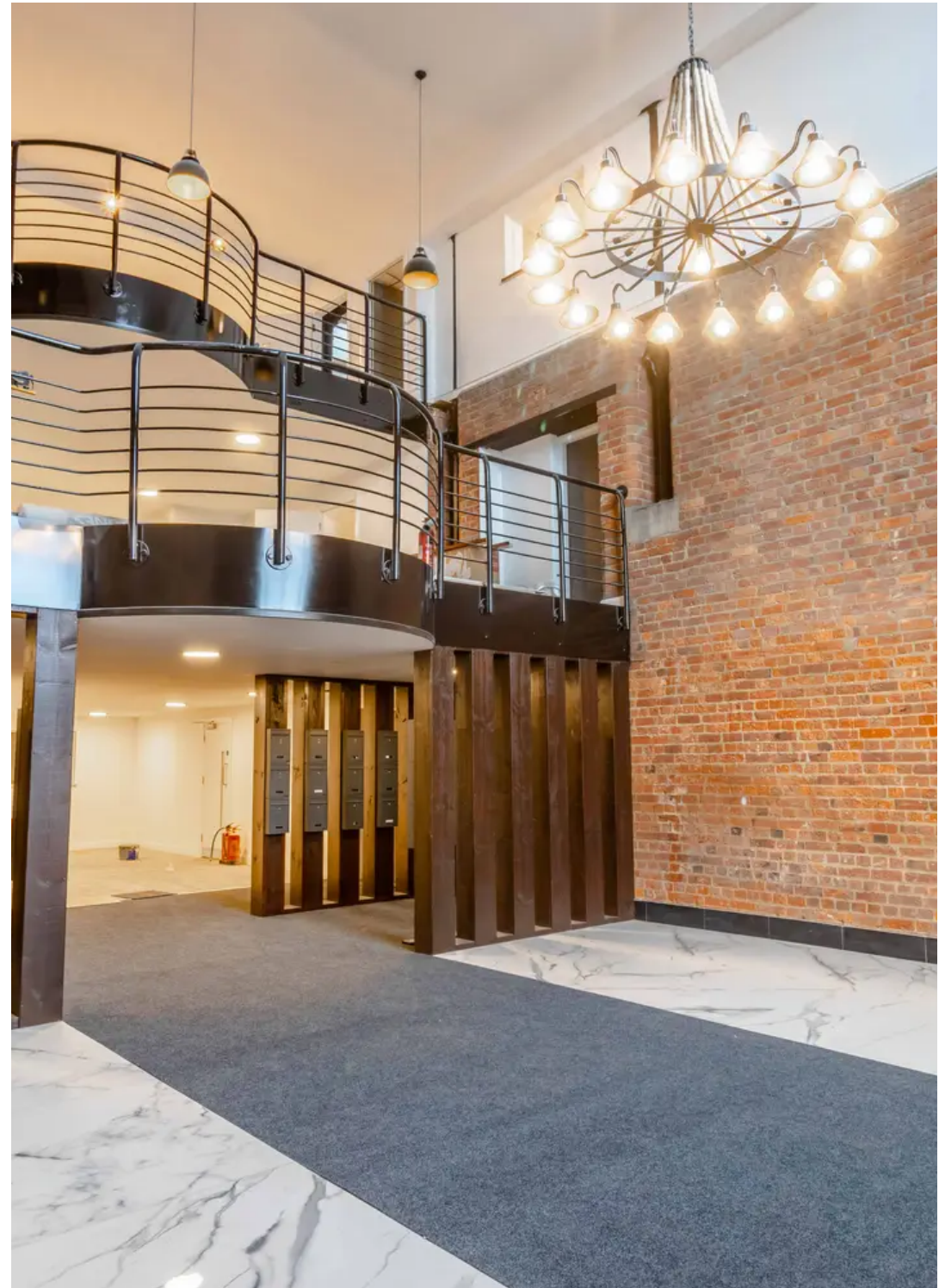
## Flat 24

3 The Maltings Wetmore Road, Burton-On-Trent

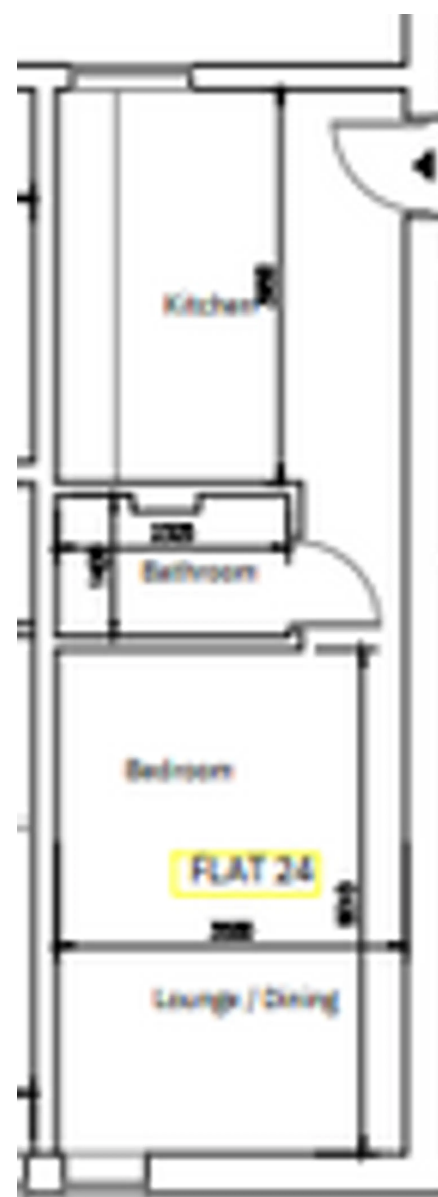
PURCHASE PRICE DISCOUNTS AVAILABLE FOR FIRST TIME BUYERS AND HOMEOWNERS  
FREE LEGALS & FURNITURE PACKAGE ON ALL SALES The Maltings is a stunning  
Grade II listed building centrally located within the close proximity of Burton On  
Trent's town centre.

Tenure: Leasehold

- Grade Two Character Listed Building
- Off Road Allocated Parking
- Unique Central Glass Roofed Atrium
- Final One & Two Bedroom Apartments Available
- Development Now Completed
- FREE LEGALS & FURNITURE PACKAGE ON ALL SALES
- PURCHASE PRICE DISCOUNTS AVAILABLE FOR FIRST TIME BUYERS AND HOMEOWNERS







**G.24**



# Empire

27 Frederick Street, Birmingham - B1 3HH

0121 514 8850 • [info@empirelpm.com](mailto:info@empirelpm.com) • [www.empirelpm.com/](http://www.empirelpm.com/)

