

Peter Alan - Aberdare

Not for marketing
purposes -
INTERNAL USE ONLY

01685701216
aberdare@peteralan.co.uk
peteralan.co.uk



**Brynderwen,
CwmdareCF44 8SE**

- EPC Rating: C
- 4 Bedrooms
- 2 Bathrooms
- Beautiful View
- Ample Parking





About The Property

This immaculate semi-detached house offers spacious living with two reception rooms, a well-equipped kitchen, four bedrooms, two bathrooms, ample parking, and beautiful views, all set in a peaceful location near schools and parks, perfect for a family to enjoy immediately without renovation.

Accommodation

Living Room

18' 4" Max x 12' 4" Max (5.59m Max x 3.76m Max)

Dining Room

14' 4" Max x 8' 7" Max (4.37m Max x 2.62m Max)

Kitchen

14' 3" Max x 9' 2" Max (4.34m Max x 2.79m Max)

Bathroom

14' 1" Max x 7' Max (4.29m Max x 2.13m Max)

Bedroom One

16' 4" Max x 8' 6" Max (4.98m Max x 2.59m Max)

Bedroom Two

16' 4" Max x 7' Max (4.98m Max x 2.13m Max)

Shower Room

8' Max x 5' 8" Max (2.44m Max x 1.73m Max)

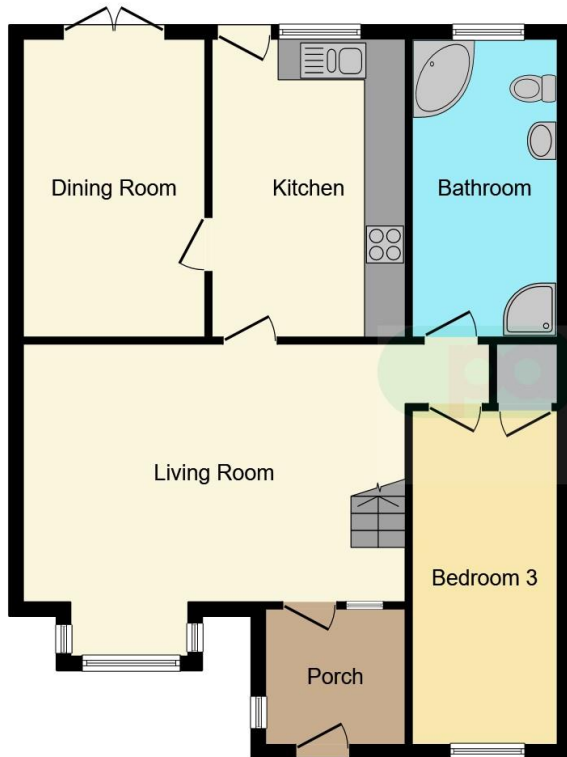
Bedroom Three

16' 1" Max x 7' 1" Max (4.90m Max x 2.16m Max)

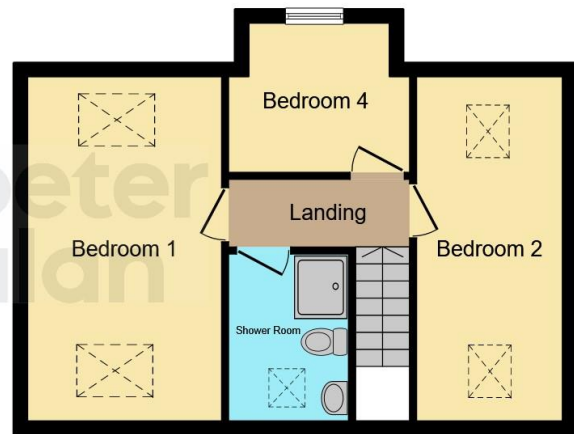
Peter Alan - Aberdare

01685701216
aberdare@peteralan.co.uk
peteralan.co.uk





Ground Floor



First Floor

This floor plan is for illustrative purposes only. It is not drawn to scale. Any measurements, floor areas (including any total floor area), openings and orientation are approximate. No details are guaranteed, they cannot be relied upon for any purpose and they do not form part of any agreement. No liability is taken for any error, omission or misstatement. A party must rely upon its own inspection(s). Powered by www.focalagent.com

Important Information

Note while we endeavour to make our sales details accurate and reliable, if there is any point which is of particular interest to you, please contact the office and we will be pleased to confirm the position for you. We have not personally tested any apparatus, equipment, fixtures, fittings or services and cannot verify they are in working order or fit for their purposes. Nothing in these particulars is intended to indicate that carpets or curtains, furnishings or fittings, electrical goods (whether wired or not). Gas fires or light fittings or any other fixtures not expressly included form part of the property offered for sale. This computer generated Floorplan, if applicable, is intended as a general guide to the layout and design of the property. It is not to scale and should not be relied upon for dimensions. Tenure: We cannot confirm the tenure of the property as we have not had access to the legal documents. The buyer is advised to obtain verification from their solicitor or surveyor.