



Blue Lake Close, offers over £260,000

- Council Tax band D
- Three well-proportioned bedrooms
- Generous reception room
- Three car driveway & visitor parking spaces opposite the house.
- Natural light-filled kitchen
- Highly sought after location
- EPC Rating: B



 3
  1
  1



About the property

Presenting an immaculate detached house for sale, this property offers a blend of comfort, convenience and charm. The house is ideally positioned in a highly sought after location, with proximity to local amenities and a range of reputable schools, making it an excellent choice for families.

The property boasts three well-proportioned bedrooms and a substantial reception room, offering ample space for relaxation and entertainment. The reception room is especially noteworthy for its generous size, which invites a sense of openness and freedom.

The heart of this home is undoubtedly the kitchen, which is not only bathed in natural light but also offers generous dining space, perfect for family meals or hosting guests. The kitchen's design and layout seamlessly combine functionality with modern aesthetics to create a space that is as practical as it is stylish.

The house comes with a single bathroom, en-suite and ground floor toilet, reflecting an elegant simplicity whilst ensuring all essential facilities are in place.

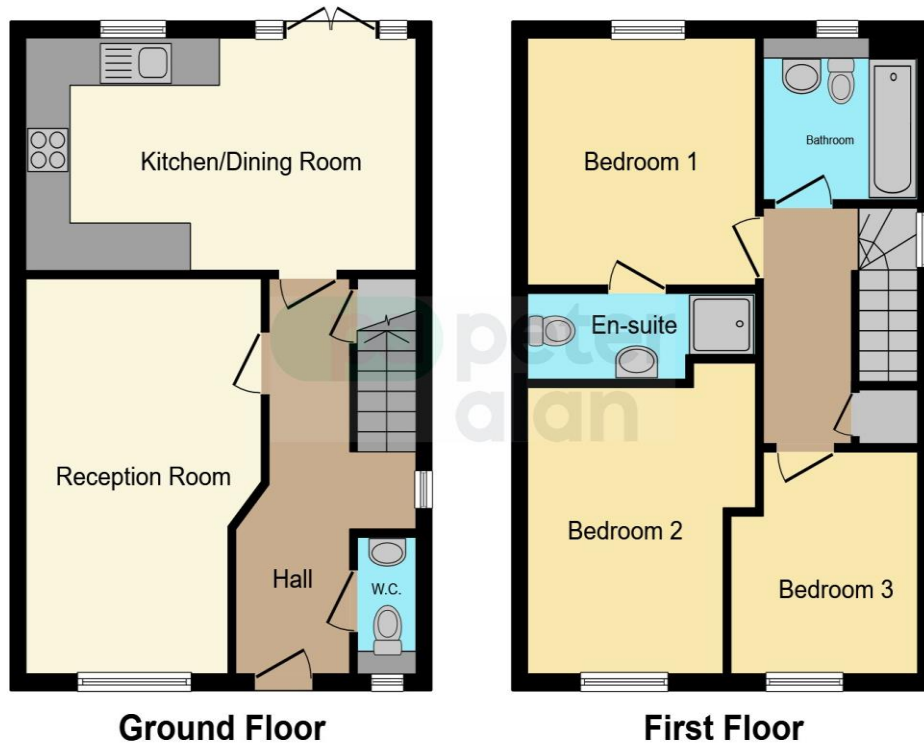


Accommodation

01495360922

ebbwvale@peteralan.co.uk

Floorplan



This floor plan is for illustrative purposes only. It is not drawn to scale. Any measurements, floor areas (including any total floor area), openings and orientation are approximate. No details are guaranteed, they cannot be relied upon for any purpose and they do not form part of any agreement. No liability is taken for any error, omission or misstatement. A party must rely upon its own inspection(s). Powered by www.focalagent.com

Important Information

Note while we endeavour to make our sales details accurate and reliable, if there is any point which is of particular interest to you, please contact the office and we will be pleased to confirm the position for you. We have not personally tested any apparatus, equipment, fixtures, fittings or services and cannot verify they are in working order or fit for their purposes. Nothing in these particulars is intended to indicate that carpets or curtains, furnishings or fittings, electrical goods (whether wired or not). Gas fires or light fittings or any other fixtures not expressly included form part of the property offered for sale. This computer generated Floorplan, if applicable, is intended as a general guide to the layout and design of the property. It is not to scale and should not be relied upon for dimensions. Tenure: We cannot confirm the tenure of the property as we have not had access to the legal documents. The buyer is advised to obtain verification from their solicitor or surveyor.

Peter Alan Limited is registered in England and Wales under company number 2073153, Registered Office is Cumbria House, 16-20 Hockliffe Street, Leighton Buzzard, Bedfordshire, LU7 1GN. VAT Registration Number is 500 2481 05. For activities relating to regulated mortgages and non-investment insurance contracts, Peter Alan Limited is an appointed representative of Connells Limited which is authorised and regulated by the Financial Conduct Authority. Connells Limited's Financial Services Register number is 302221. Most buy-to-let

pa peter
alan