



**Newall Street,
Abertillery NP13 1EH**

- EPC Rating: D
- council tax band A
- Valley Views
- Close to amenities
- Three bedrooms





About The Property

Welcome to this End-terrace home on Newall Street, Abertillery. Featuring three bedrooms, the property offers great potential for customization. Enjoy stunning valley views and the convenience of being close to local amenities. A perfect opportunity to create your ideal home.

Accommodation

Entrance Hall

Lounge/Diner

Kitchen

Bathroom

Bedroom One

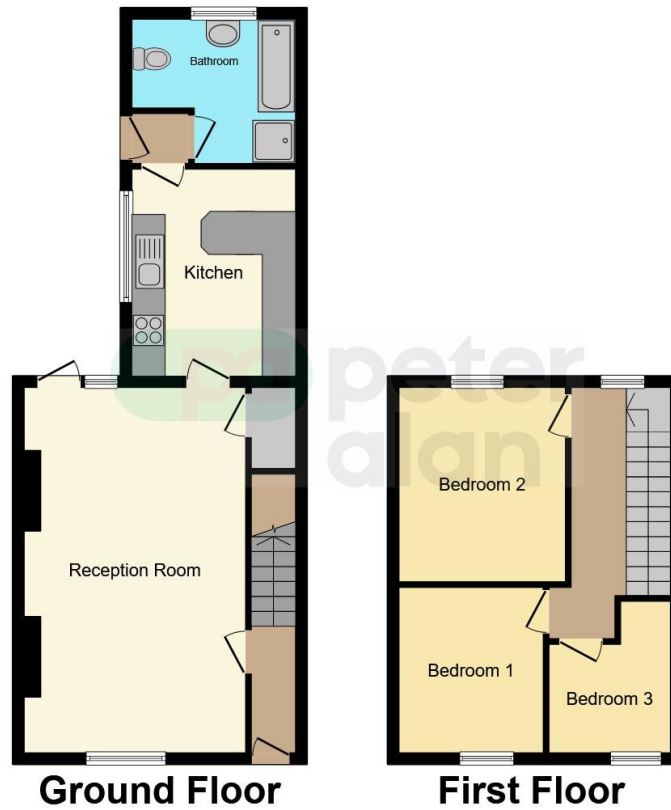
Bedroom Two

Bedroom Three

Peter Alan - Ebbw Vale

01495360922
ebbwvale@peteralan.co.uk
peteralan.co.uk





This floor plan is for illustrative purposes only. It is not drawn to scale. Any measurements, floor areas (including any total floor area), openings and orientation are approximate. No details are guaranteed, they cannot be relied upon for any purpose and they do not form part of any agreement. No liability is taken for any error, omission or misstatement. A party must rely upon its own inspection(s). Powered by www.focalagent.com

Important Information

Note while we endeavour to make our sales details accurate and reliable, if there is any point which is of particular interest to you, please contact the office and we will be pleased to confirm the position for you. We have not personally tested any apparatus, equipment, fixtures, fittings or services and cannot verify they are in working order or fit for their purposes. Nothing in these particulars is intended to indicate that carpets or curtains, furnishings or fittings, electrical goods (whether wired or not). Gas fires or light fittings or any other fixtures not expressly included form part of the property offered for sale. This computer generated Floorplan, if applicable, is intended as a general guide to the layout and design of the property. It is not to scale and should not be relied upon for dimensions. Tenure: We cannot confirm the tenure of the property as we have not had access to the legal documents. The buyer is advised to obtain verification from their solicitor or surveyor.