

BY
BY DESIGN



The Bungalow
Leire Lane, Broughton Astley, Leicestershire

Refurbished, Extended Three/Four Bedroom Detached Bungalow, Re-Imagined for Modern Living.

This three/four bedroom bungalow has been entirely re-imagined for modern living, creating a beautifully refurbished and thoughtfully extended detached residence, where contemporary design and countryside calm are held in perfect balance.

Sit quietly along Leire Lane, on the rural edge of one of the area's most sought-after villages this bungalow has been fully refurbished and extended to offer over 1,300 square feet of elegant and flexible, luxury living space in a country setting.

Despite the rural feel, the village of Broughton Astley remains close at hand, offering everyday amenities, schooling and connections. Lutterworth town centre and major road networks are within a short drive, as well, making this an ideal balance of country living and convenience.











Accommodation

The approach through the secure, electric double gates to the gravelled drive immediately sets the tone: open skies, surrounding greenery and a sense of space that feels both private and connected.

Stepping inside, the transformation is striking. The welcoming hall leads into an impressive open-plan kitchen, dining and living space, designed with both everyday life and entertaining in mind. Bespoke cabinetry and central island with quartz surfaces, clean architectural lines and carefully chosen finishes create a room that feels confident yet composed. Anchored by light that pours in through wide windows and the south-facing bi-fold doors. A contemporary log-burning stove to the corner of the sitting room provides a cosy focal point. This is a space that adapts effortlessly, whether hosting friends or enjoying quieter moments overlooking the garden and open skies above.

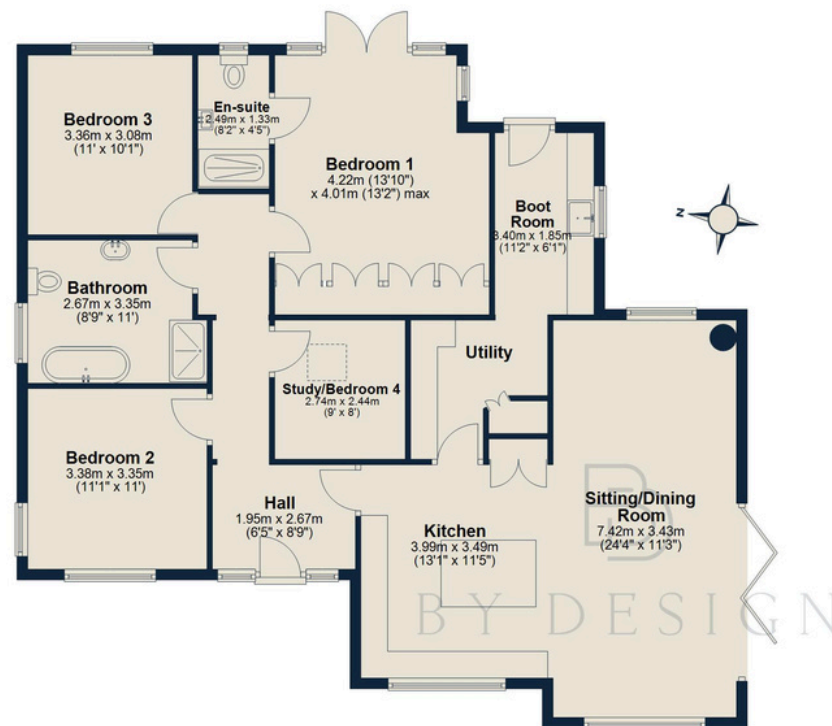
The layout offers flexibility rarely found in bungalow living. Three double bedrooms are complemented by a fourth room that lends itself perfectly as a guest bedroom, home office or snug, allowing the home to evolve with its next owner's needs.

The principal bedroom is particularly well considered, offering a calm retreat with a stylish en suite shower room and extensive, fitted wardrobes with ample storage. A beautifully appointed family bathroom with free-standing bath and walk-in, double shower continues the theme of quality and contemporary elegance, found throughout.

Outside, the garden has been carefully arranged to make the most of this leafy, rural setting, with space for relaxed outdoor dining and quiet mornings. Enjoying a southerly aspect it's the perfect sanctuary for peace and privacy. The gravelled drive to the front, which provides ample parking, is flanked by lawns, bedding and mature hedges, while a timber framed workshop and former stable, provide secure storage.



Ground Floor Approx. 127.1 sq. metres (1368.3 sq. feet)



Score	Energy rating	Current	Potential
92+	A		93 A
81-91	B		
69-80	C		
55-68	D	58 D	
39-54	E		
21-38	F		
1-20	G		



Total area: approx. 127.1 sq. metres (1368.3 sq. feet)

Measurements are approximate. Not to scale.
For illustrative purposes only.
Plan produced using PlanUp.

Leire Lane, Broughton Astley, Leicestershire



Scan for online details:



Leire Lane, Broughton Astley, Leicestershire



BY DESIGN

Charlie Sylvanus-Jones
charlie.sj@bydesignhomes.com
07870 564815
ByDesignHomes.com

National audience
local knowledge