





# Turnberry Avenue, Blyth

Offers Over £185,000

3 2 1



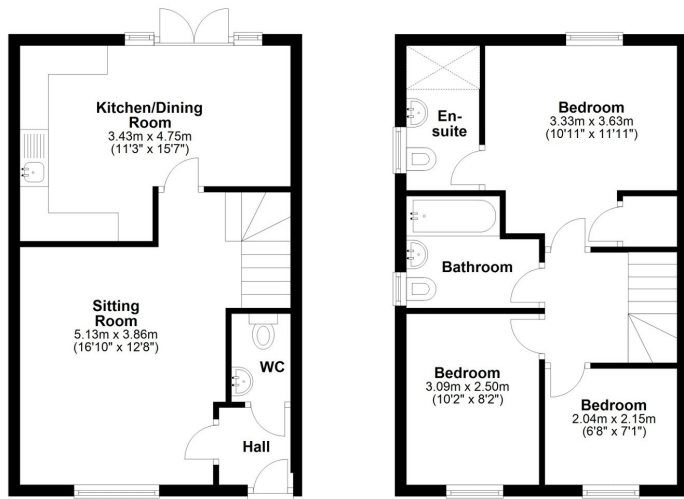
Welcome to Turnberry Avenue, Blyth, where your dream lifestyle awaits! **Take a moment to watch our property video and envision a lifestyle of unparalleled refinement.**

This charming 3-bedroom semi-detached home embodies the essence of comfortable and leisurely living. Boasting three generously sized bedrooms, with the master bedroom featuring an ensuite, this residence ensures both convenience and style. Turnberry Avenue is nestled in a highly sought-after neighbourhood, situated just a short drive from the town centre and a stone's throw away from the prestigious Blyth Golf Club, which is perfect for avid golfers looking to tee off whenever the mood strikes. Additionally, the beautiful beach is only a quick 10-minute drive away, so for those yearning for the soothing sounds of the ocean and the feel of sandy shores underfoot, you'll have endless opportunities to enjoy the sea breeze, take leisurely walks and create cherished memories with friends and family.

OPEN HOUSE with refreshments will be held on Sunday, 29th of October, between 3 pm and 5 pm (Please contact us to confirm your attendance).

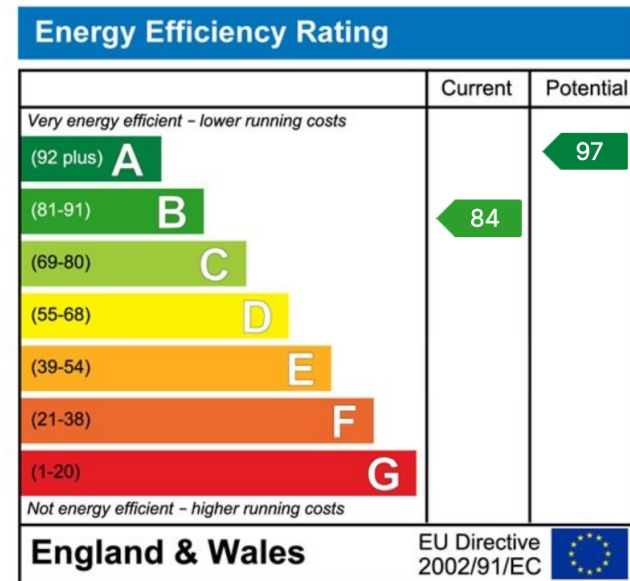






Total area: approx. 78.4 sq. metres (843.7 sq. feet)

- New To The Market - Vacant Possession
- 3 Spacious Bedrooms
- Convenient Location
- Close to Local Amenities
- Close To Blyth Golf Course and Blyth Beach
- Turnberry Avenue, Blyth, Where your dream lifestyle awaits!
- Master Ensuite
- Driveway For Two Cars
- Ideal Family Home, First Time Buy or Buy To Let
- Viewings Highly Recommended



Our Agents, Muckles Yard, Bridge Street, Rothbury, Morpeth, Northumberland, NE65 7SE.

T: 01670 613203 | M: 07444 723020 | E: js@ouragents.co.uk

07444 723020

Our Agents Estate Agents