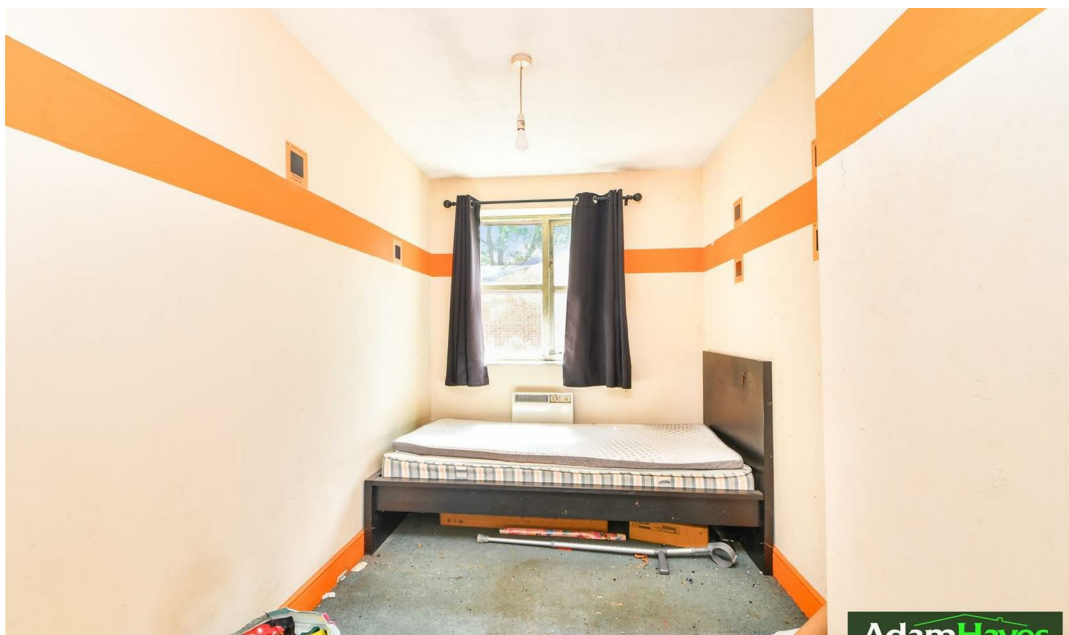




Stevenson Close, High Barnet, EN5

£250,000

 2 Bedrooms  1 Bathroom  1 Reception



Adam Hayes - North Finchley Office - Sales 365 Ballards Lane, North Finchley, London, N12 8LL

Tel: 020 8445 4008 Email: info@adam-hayes.co.uk Web: www.adam-hayes.co.uk

Stevenson Close, High Barnet, EN5

£250,000

2 Bedrooms 1 Bathrooms 1 Receptions

Key Features

- Two Bedrooms
- Top Floor Apartment
- Parking
- Loft Access
- Chain Free
- 0.1 Miles to Oakleigh Park Station

Other Information

Tenure: Leasehold
Length of Lease: 70 Years
Ground Rent: £100.00 P/A
Service Charge: £930.00 P/A
Council Tax Band: C

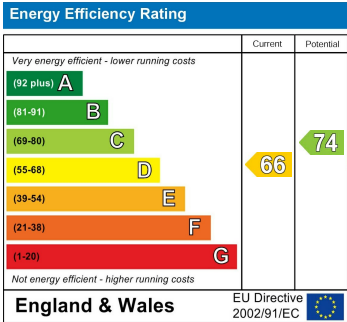


Nearest Stations

Oakleigh Park Station	0.1 miles
New Barnet Station	0.7 miles
Totteridge & Whetstone Station	0.8 miles

Property Description

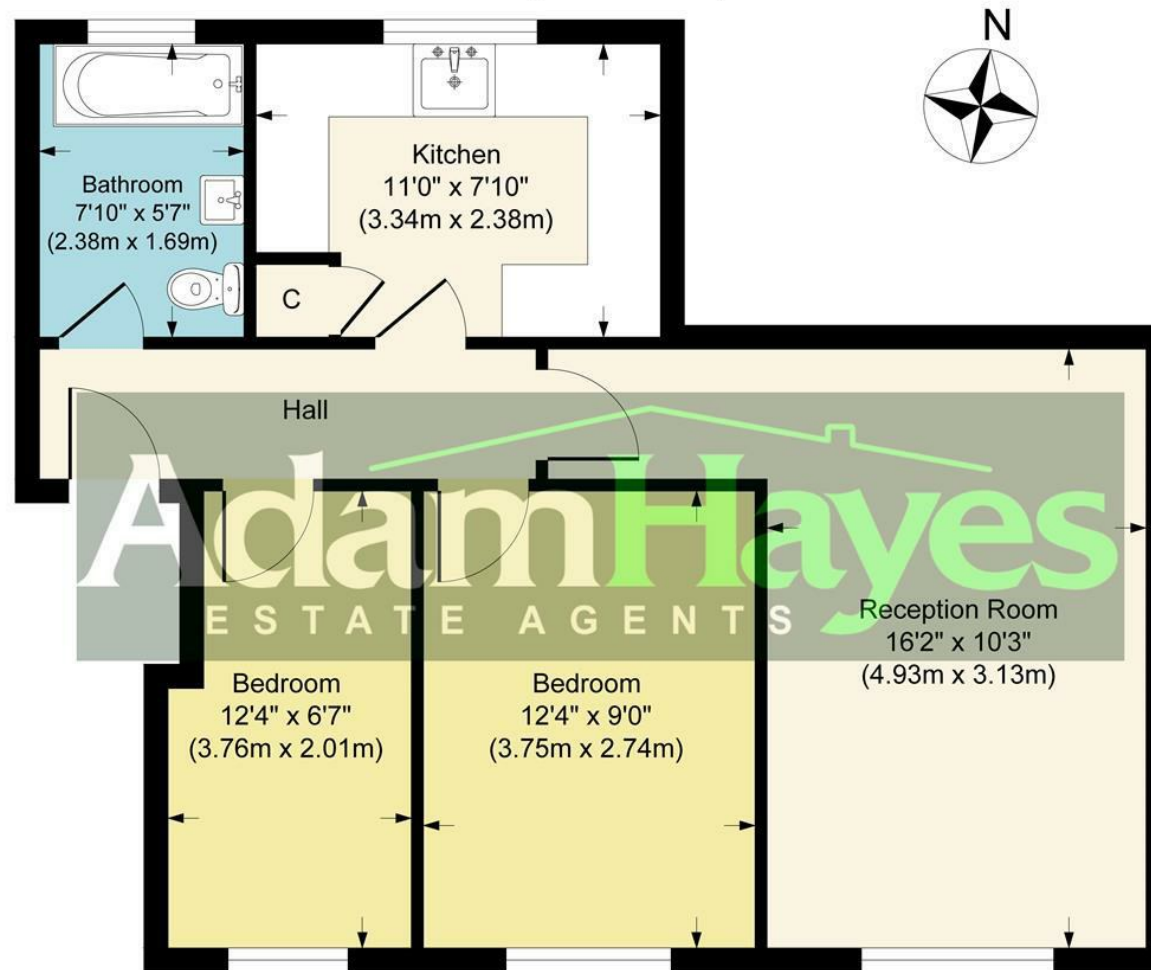
Situated within 0.1 mile of Oakleigh Park Station is this two bedroom top floor apartment of this purpose built block. The property requires modernisation throughout and benefits from an approx. 16ft reception room, a separate kitchen and three piece bathroom suite. The property is offered on a chain free basis and further benefits from private loft access, double glazing, entryphone system and parking. To really appreciate the location, size and potential, an internal viewing is highly recommended through the vendors sole agents, Adam Hayes Estate Agents.



Adam Hayes - North Finchley Office - Sales 365 Ballards Lane, North Finchley, London, N12 8LL

Tel: 020 8445 4008 Email: info@adam-hayes.co.uk Web: www.adam-hayes.co.uk

Approximate Gross Internal Area
578 sq ft - 54 sq m



Second Floor

Although every attempt has been made to ensure accuracy, all measurements are approximate.
This floorplan is for illustrative purposes only and not to scale.
Measured in accordance with RICS Standards.

These particulars, whilst believed to be accurate, are set out as a general outline only for guidance and do not constitute any part of an offer or contract. Intending purchasers or prospective tenants should not rely on them as statements or representation of fact, but must satisfy themselves by inspection or otherwise as to their accuracy. We have not carried out a detailed survey, not tested the services, appliances and specific fittings. Room sizes should not be relied upon for carpets and furnishings. The measurements given are approximate. No person in this firm's employment has the authority to make or give any representation or warranty in respect of the property.