



Finchley Park, London, N12 9JL

£850,000

 3 Bedroom  1 Bathroom  2 Reception








Adam Hayes - North Finchley Office - Sales 365 Ballards Lane, North Finchley, London, N12 8LL

Tel: 020 8445 4008 Email: [info@adam-hayes.co.uk](mailto:info@adam-hayes.co.uk) Web: [www.adam-hayes.co.uk](http://www.adam-hayes.co.uk)



Finchley Park, London, N12 9JL

£850,000

 3 Bedrooms  1 Bathrooms  2 Receptions

## Key Features

- Three Bedrooms
- Semi Detached
- Modern Kitchen
- Mature Garden
- Guest Cloakroom
- Modern Bathroom

## Other Information

Tenure:

Council Tax Band: E



## Nearest Stations

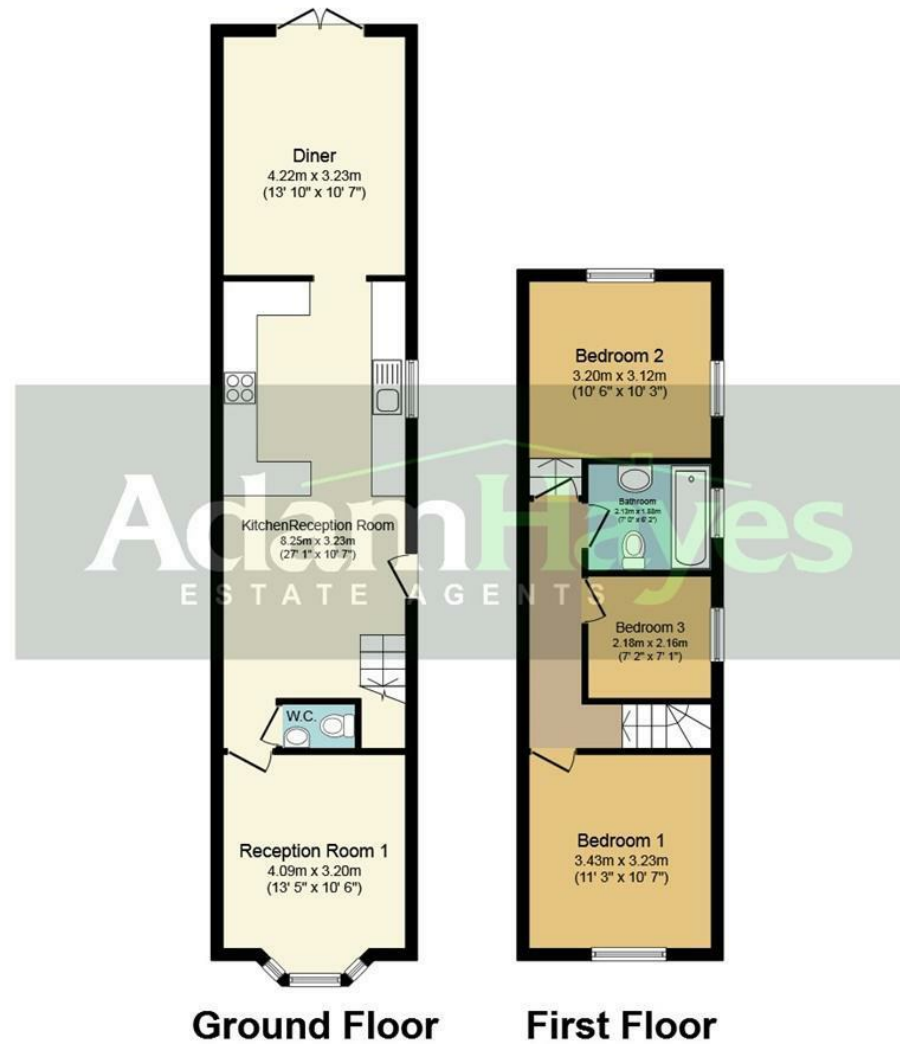
Woodside park Station	0.6 miles
Totteridge & Whetstone Station	0.7 miles
West Finchley Station	1.0 miles

## Property Description

Situated in this residential tree lined road off North Finchley High Road and within minutes' walk of local shops and amenities and Woodside Park Tube station is this recently refurbished and extended three bedroom Semi Detached cottage. The property benefits from two reception rooms, an approximately 120ft mature rear garden, a modern open plan kitchen, a guest cloakroom and modern bathroom. To really appreciate the location, style and potential an internal viewing is highly recommended via vendors main agents Adam Hayes Estate Agents.

Adam Hayes - North Finchley Office - Sales 365 Ballards Lane, North Finchley, London, N12 8LL

**Tel:** 020 8445 4008 **Email:** [info@adam-hayes.co.uk](mailto:info@adam-hayes.co.uk) **Web:** [www.adam-hayes.co.uk](http://www.adam-hayes.co.uk)



Total floor area 91.0 sq. m. (980 sq. ft.) approx

This plan is for illustration purposes only and may not be representative of the property. Plan not to scale.

These particulars, whilst believed to be accurate, are set out as a general outline only for guidance and do not constitute any part of an offer or contract. Intending purchasers or prospective tenants should not rely on them as statements or representation of fact, but must satisfy themselves by inspection or otherwise as to their accuracy. We have not carried out a detailed survey, not tested the services, appliances and specific fittings. Room sizes should not be relied upon for carpets and furnishings. The measurements given are approximate. No person in this firm's employment has the authority to make or give any representation or warranty in respect of the property.