







Adam Hayes - North Finchley Office - Lettings 365 Ballards Lane, North Finchley, London, N12 8LL

Tel: 020 8445 4008 Email: [info@adam-hayes.co.uk](mailto:info@adam-hayes.co.uk) Web: [www.adam-hayes.co.uk](http://www.adam-hayes.co.uk)

Friern Barnet Lane, London, N20 0NJ

£1,700 PCM

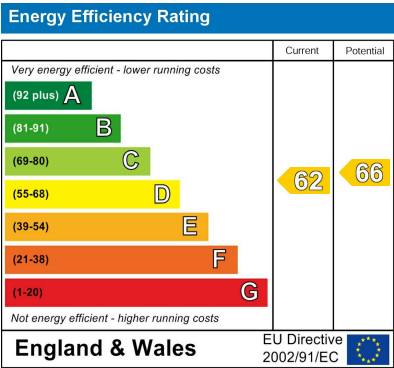
 2 Bedrooms  1 Bathrooms  1 Receptions

Key Features

- Two Double Bedroom Flat
- Modern Shower Room
- Good Size Lounge
- Wooden Flooring
- Double Glazing
- Gas Central Heating
- Popular Location
- Top Floor (4th Floor)

Other Information

Council Tax Band: C  
Length of Tenancy: Long Let  
Deposit: £1,960



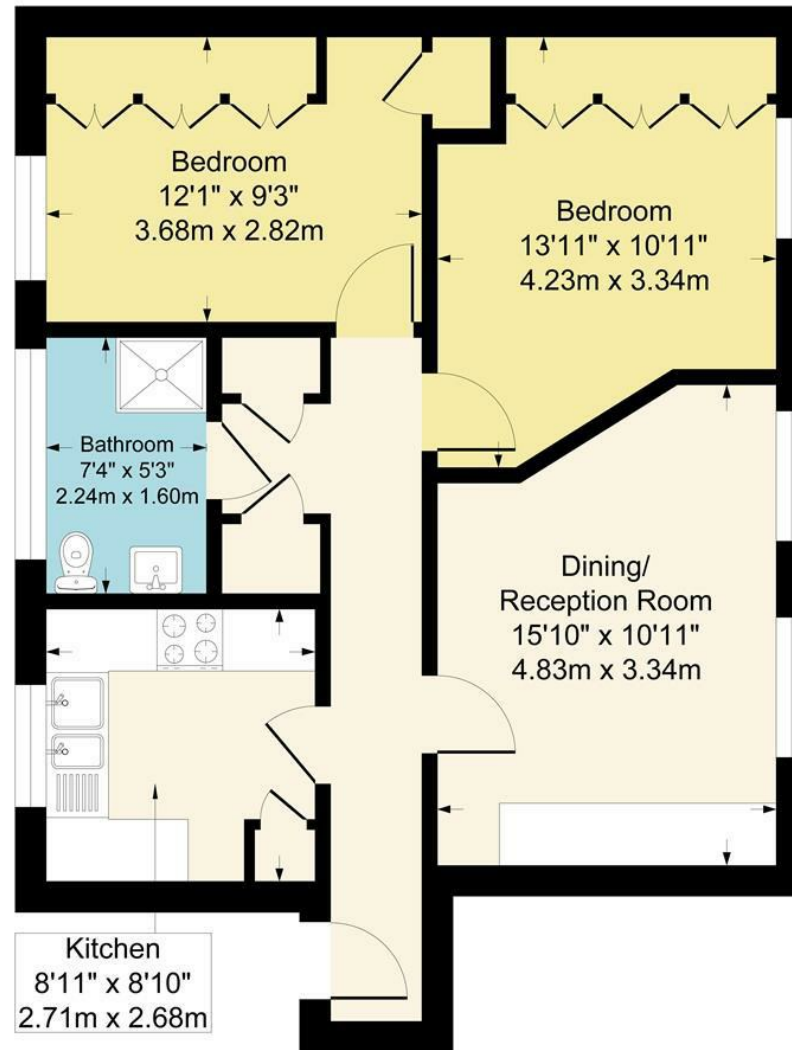
Nearest Stations

- 
- 
- 

Property Description

A well-proportioned two double bedroom top-floor flat set within a purpose-built development, ideally located within easy reach of Totteridge & Whetstone Tube Station. Residents benefit from excellent access to a wide range of cafes, restaurants, and shopping facilities along both North Finchley High Road and Whetstone High Road, as well as the green open spaces of Friary Park. The property features a spacious lounge with ample storage, a contemporary shower room, double glazing, gas central heating, and attractive laminated wooden flooring. Additional benefits include communal parking to the rear. Offered part furnished or unfurnished and available for immediate occupation.

**Approximate Gross Internal Area  
684 sq ft - 64 sq m**



Although every attempt has been made to ensure accuracy, all measurements are approximate.  
This floorplan is for illustrative purposes only and not to scale.  
Measured in accordance with RICS Standards.

These particulars, whilst believed to be accurate, are set out as a general outline only for guidance and do not constitute any part of an offer or contract. Intending purchasers or prospective tenants should not rely on them as statements or representation of fact, but must satisfy themselves by inspection or otherwise as to their accuracy. We have not carried out a detailed survey, not tested the services, appliances and specific fittings. Room sizes should not be relied upon for carpets and furnishings. The measurements given are approximate. No person in this firm's employment has the authority to make or give any representation or warranty in respect of the property.