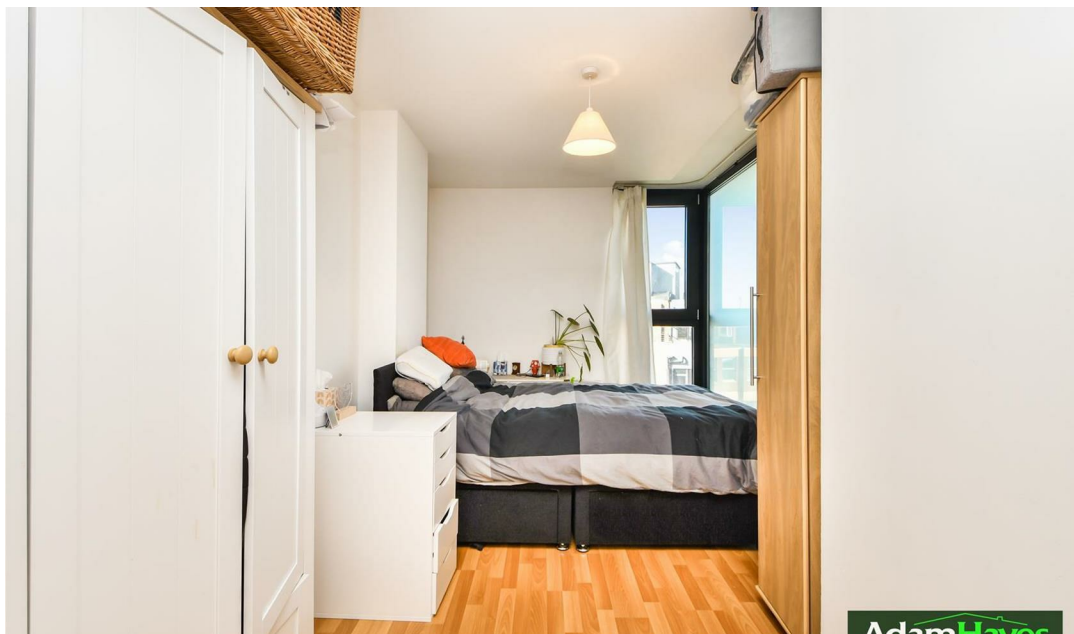




Kingsway, London, N12

OIEO £325,000

 2 Bedrooms  2 Bathrooms  1 Reception



Adam Hayes - North Finchley Office - Sales 365 Ballards Lane, North Finchley, London, N12 8LL  
Tel: 020 8445 4008 Email: [info@adam-hayes.co.uk](mailto:info@adam-hayes.co.uk) Web: [www.adam-hayes.co.uk](http://www.adam-hayes.co.uk)

Kingsway, London, N12

£325,000

2 Bedrooms 2 Bathrooms 1 Receptions

### Key Features

- Two Double Bedrooms
- Two Bathrooms
- Chain Free
- Secure Underground Parking
- 24 Hour Concierge
- Open plan Kitchen/diner

### Nearest Stations

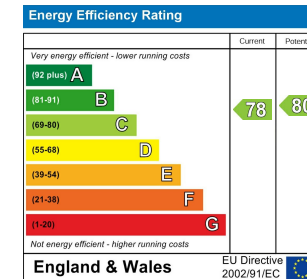
- Woodside Park Station 0.5miles
- West Finchley Station 0.5miles
- Finchley Central Station 1.0miles

### Property Description

Situated in this popular lift serviced block in the heart of Tally Ho North Finchley, is well presented two bedroom, two bathroom (one en-suite shower) seventh floor luxury apartment. The property is offered chain free and benefits from a 24 hour concierge, an approximately 16ft reception with a modern open plan kitchen with integrated appliances, spectacular panoramic views overlooking London and underground parking. Early viewings highly recommended via the vendors sole agents Adam Hayes Estate Agents.

### Other Information

Tenure: Leasehold  
Length of Lease: 103 years  
Ground Rent: £200  
Service Charge: £5,800  
Council Tax Band: D



Adam Hayes - North Finchley Office - Sales 365 Ballards Lane, North Finchley, London, N12 8LL

Tel: 020 8445 4008 Email: info@adam-hayes.co.uk Web: www.adam-hayes.co.uk



**APPROX. GROSS INTERNAL FLOOR AREA 780.4 SQ FT / 72.5 SQ M**  
 Floorplans are for identification and guideline purposes only, not to scale.  
 Compliant with RICS code of measuring practice.  
 Floorplans supplied by [www.draftingfloorplan.com](http://www.draftingfloorplan.com)

These particulars, whilst believed to be accurate, are set out as a general outline only for guidance and do not constitute any part of an offer or contract. Intending purchasers or prospective tenants should not rely on them as statements or representation of fact, but must satisfy themselves by inspection or otherwise as to their accuracy. We have not carried out a detailed survey, not tested the services, appliances and specific fittings. Room sizes should not be relied upon for carpets and furnishings. The measurements given are approximate. No person in this firm's employment has the authority to make or give any representation or warranty in respect of the property.