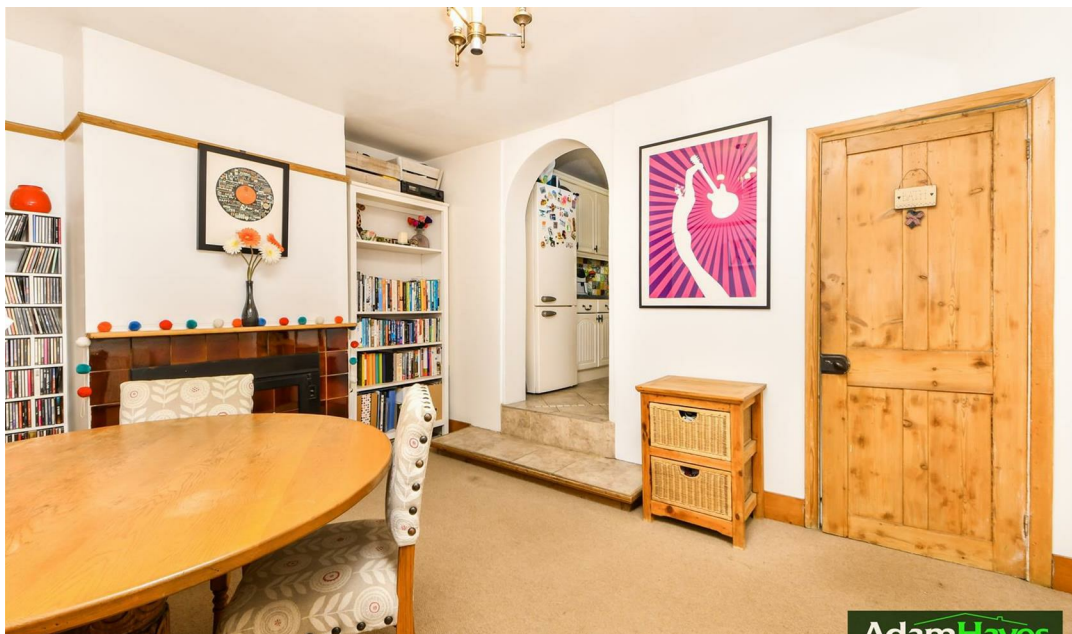




Finchley Park, North Finchley, N12

OIEO £600,000

 2 Bedrooms  1 Bathroom  1 Reception



Adam Hayes - North Finchley Office - Sales 365 Ballards Lane, North Finchley, London, N12 8LL
 Tel: 020 8445 4008 Email: info@adam-hayes.co.uk Web: www.adam-hayes.co.uk

Finchley Park, North Finchley, N12

OIEO £600,000

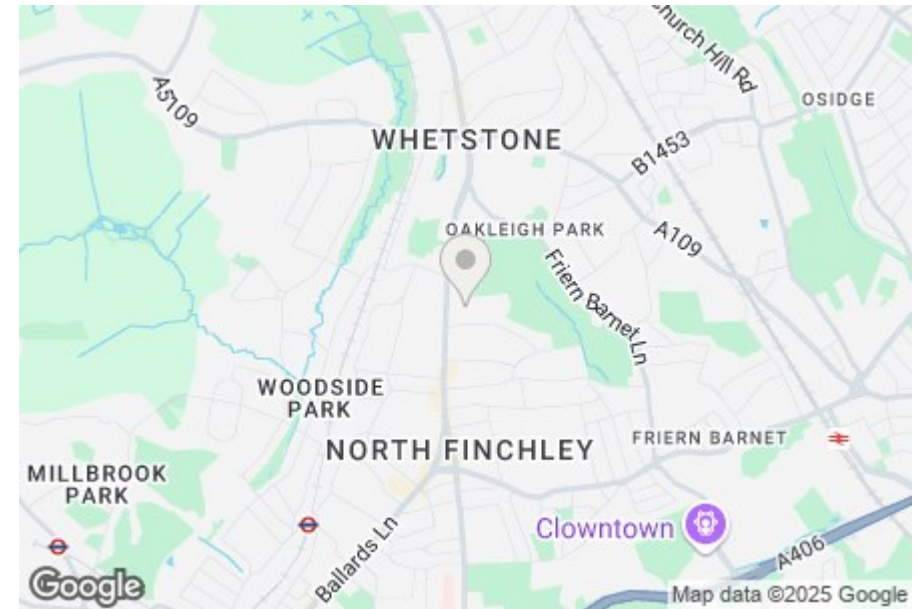
 2 Bedrooms  1 Bathrooms  1 Receptions

Key Features

- Two Double Bedrooms
- Separate Fitted Kitchen
- Dining Room
- Mature Garden
- Chain Free
- Sought After Location

Other Information

Tenure: Freehold
Council Tax Band: D



Nearest Stations

Woodside park Station	0.6 miles
Totteridge & Whetstone Station	0.7 miles
West Finchley Station	1.0 miles

Property Description

Situated in this residential tree lined road off North Finchley High Road and within minutes' walk of local shops and amenities and Woodside Park Tube station is this well presented two double bedroom, terraced house. The property benefits from a bright reception room filled with natural light, an approx. 16ft separate fitted kitchen, a dining room, a three piece bathroom suite, mature rear garden, ample storage and offered on a chain free basis. To really appreciate the location, style and potential an internal viewing is highly recommended via vendors main agents Adam Hayes Estate Agents.

Adam Hayes - North Finchley Office - Sales 365 Ballards Lane, North Finchley, London, N12 8LL

Tel: 020 8445 4008 **Email:** info@adam-hayes.co.uk **Web:** www.adam-hayes.co.uk



Although every attempt has been made to ensure accuracy, all measurements are approximate.
This floorplan is for illustrative purposes only and not to scale.
Measured in accordance with RICS Standards.

These particulars, whilst believed to be accurate, are set out as a general outline only for guidance and do not constitute any part of an offer or contract. Intending purchasers or prospective tenants should not rely on them as statements or representation of fact, but must satisfy themselves by inspection or otherwise as to their accuracy. We have not carried out a detailed survey, not tested the services, appliances and specific fittings. Room sizes should not be relied upon for carpets and furnishings. The measurements given are approximate. No person in this firm's employment has the authority to make or give any representation or warranty in respect of the property.