



Kingsway, North Finchley, N12

 1 Bedroom  1 Bathroom  1 Reception

OIEO £250,000



AdamHayes
ESTATE AGENTS



AdamHayes
ESTATE AGENTS



AdamHayes



AdamHayes

Adam Hayes - North Finchley Office - Sales 365 Ballards Lane, North Finchley, London, N12 8LL

Tel: 020 8445 4008 Email: info@adam-hayes.co.uk Web: www.adam-hayes.co.uk

Kingsway, North Finchley, N12

OIEO £250,000

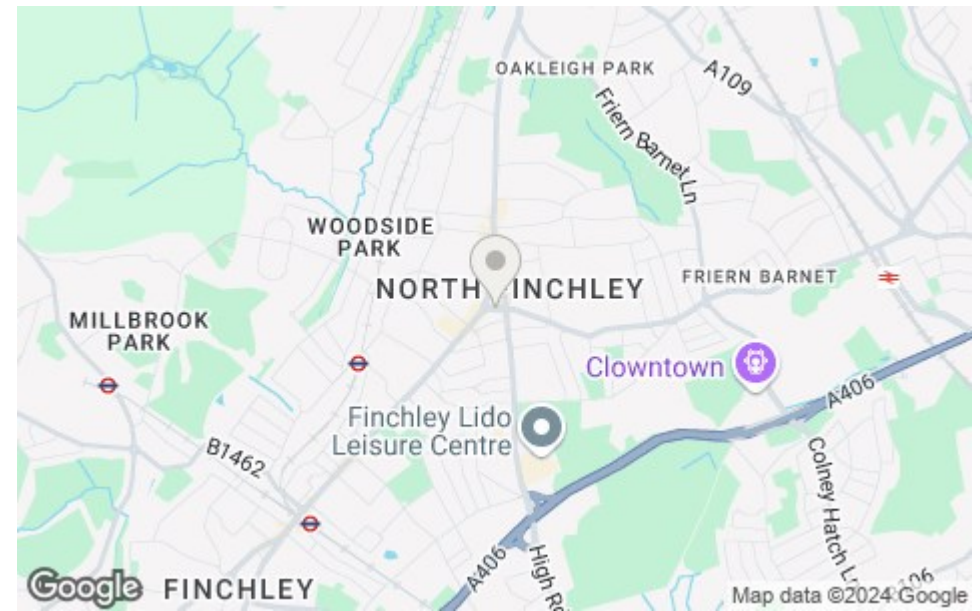
1 Bedrooms 1 Bathrooms 1 Receptions

Key Features

- One Bedroom
- Fifth Floor
- Chain Free
- 24 Hour Concierge
- Access to Roof Terrace
- Modern Kitchen

Other Information

Tenure: Leasehold
Length of Lease: 110 Years
Ground Rent: £200.00 P/A
Service Charge: £4,720.00 P/A
Council Tax Band: D

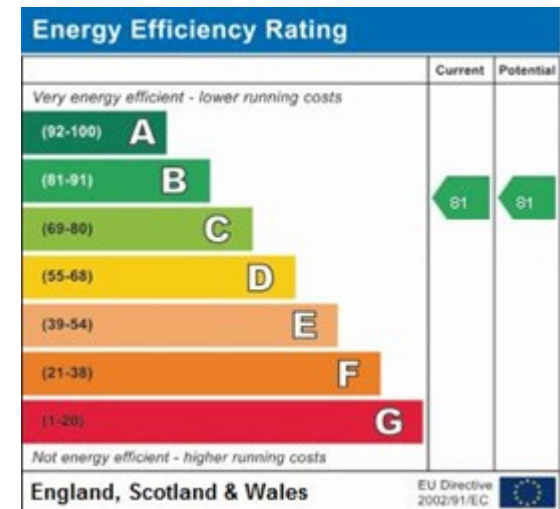


Nearest Stations

Woodside Park Station 0.5 miles
West Finchley Station 0.5 miles
Finchley Central Station 1.0 miles

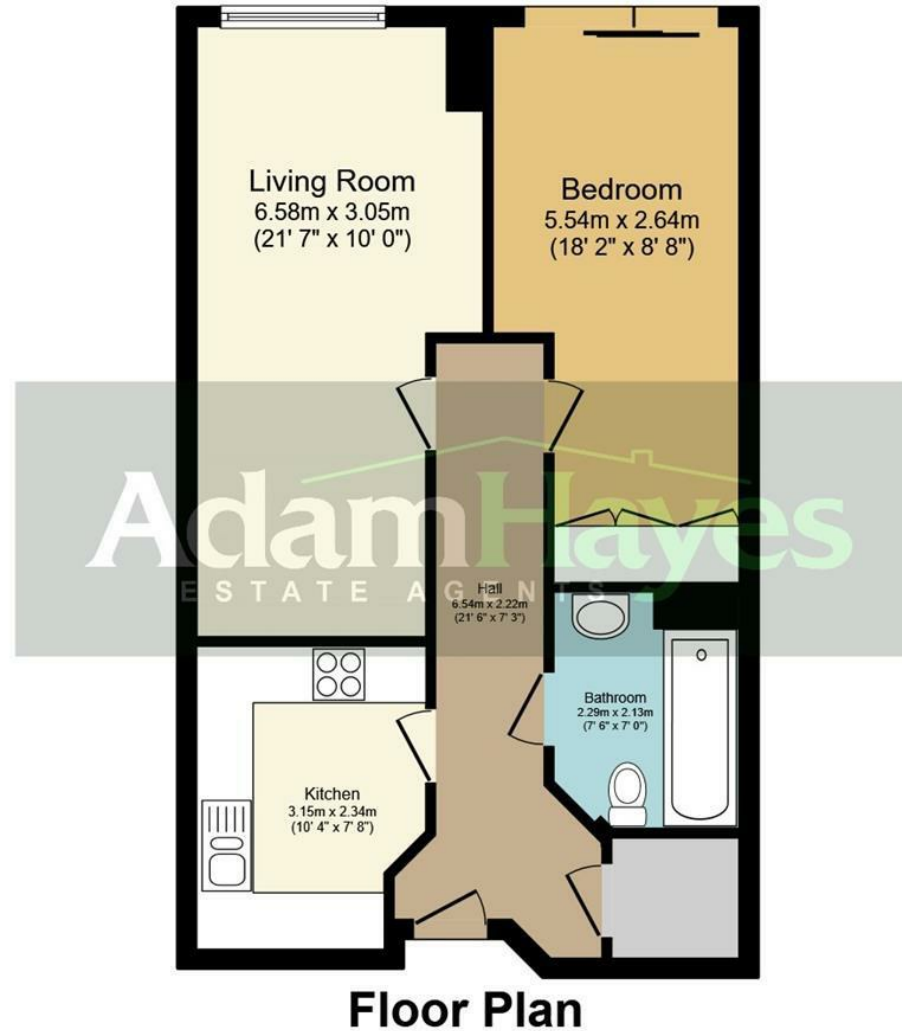
Property Description

Situated in this popular lift serviced block in the heart of Tally Ho and within minutes walk of local shops amenities and transport facilities is this well presented one bedroom fifth floor apartment. The property is offered chain free and benefits from 24 hour concierge, allocated underground parking, an approximately 21'7" reception room, a modern kitchen and bathroom, direct access to a roof terrace and double glazing. However to really appreciate the condition, location and size an internal viewing is highly recommended via vendors sole agents Adam Hayes Estate Agents.



Adam Hayes - North Finchley Office - Sales 365 Ballards Lane, North Finchley, London, N12 8LL

Tel: 020 8445 4008 Email: info@adam-hayes.co.uk Web: www.adam-hayes.co.uk



Total floor area 56.2 sq.m. (605 sq.ft.) approx

This plan is for illustration purposes only and may not be representative of the property. Plan not to scale.

These particulars, whilst believed to be accurate, are set out as a general outline only for guidance and do not constitute any part of an offer or contract. Intending purchasers or prospective tenants should not rely on them as statements or representation of fact, but must satisfy themselves by inspection or otherwise as to their accuracy. We have not carried out a detailed survey, not tested the services, appliances and specific fittings. Room sizes should not be relied upon for carpets and furnishings. The measurements given are approximate. No person in this firm's employment has the authority to make or give any representation or warranty in respect of the property.