





Adam Hayes - North Finchley Office - Sales 365 Ballards Lane, North Finchley, London, N12 8LL

Tel: 020 8445 4008 Email: info@adam-hayes.co.uk Web: www.adam-hayes.co.uk

Lodge Lane, North Finchley, N12

OIEO £500,000

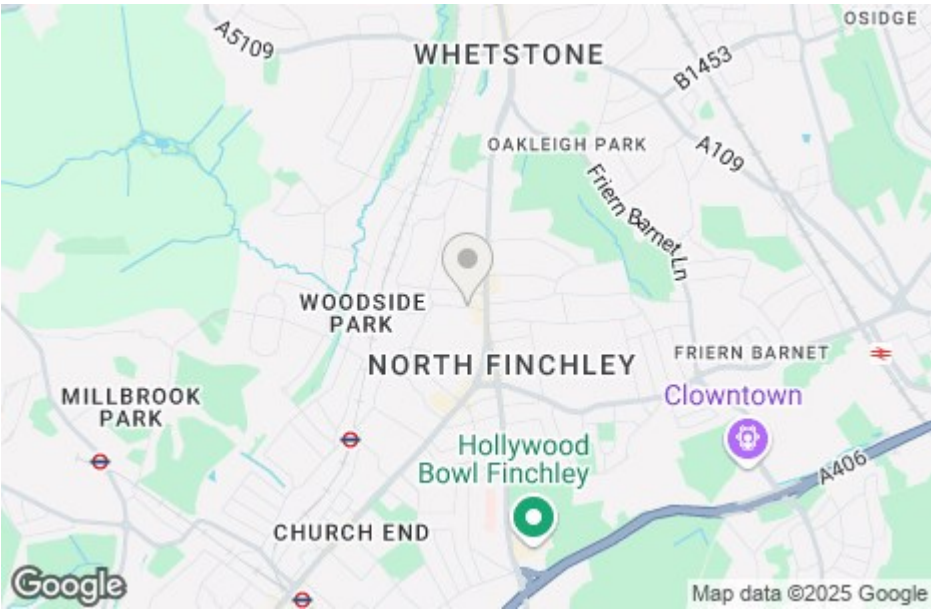
2 Bedrooms 1 Bathrooms 2 Receptions

Key Features

- Two Double Bedrooms
- Unmodernised
- Separate Kitchen
- Chain Free
- Within A Few Minutes' Walk from Local Amenities & Transport Links
- Front & Rear Garden

Other Information

Tenure: Freehold
Council Tax Band: E

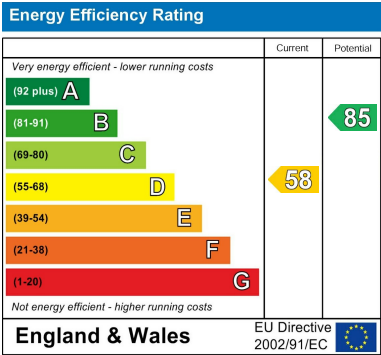


Nearest Stations

Woodside Park Station	0.3 miles
West Finchley Station	0.7 miles
Totteridge & Whetstone Station	0.9 miles

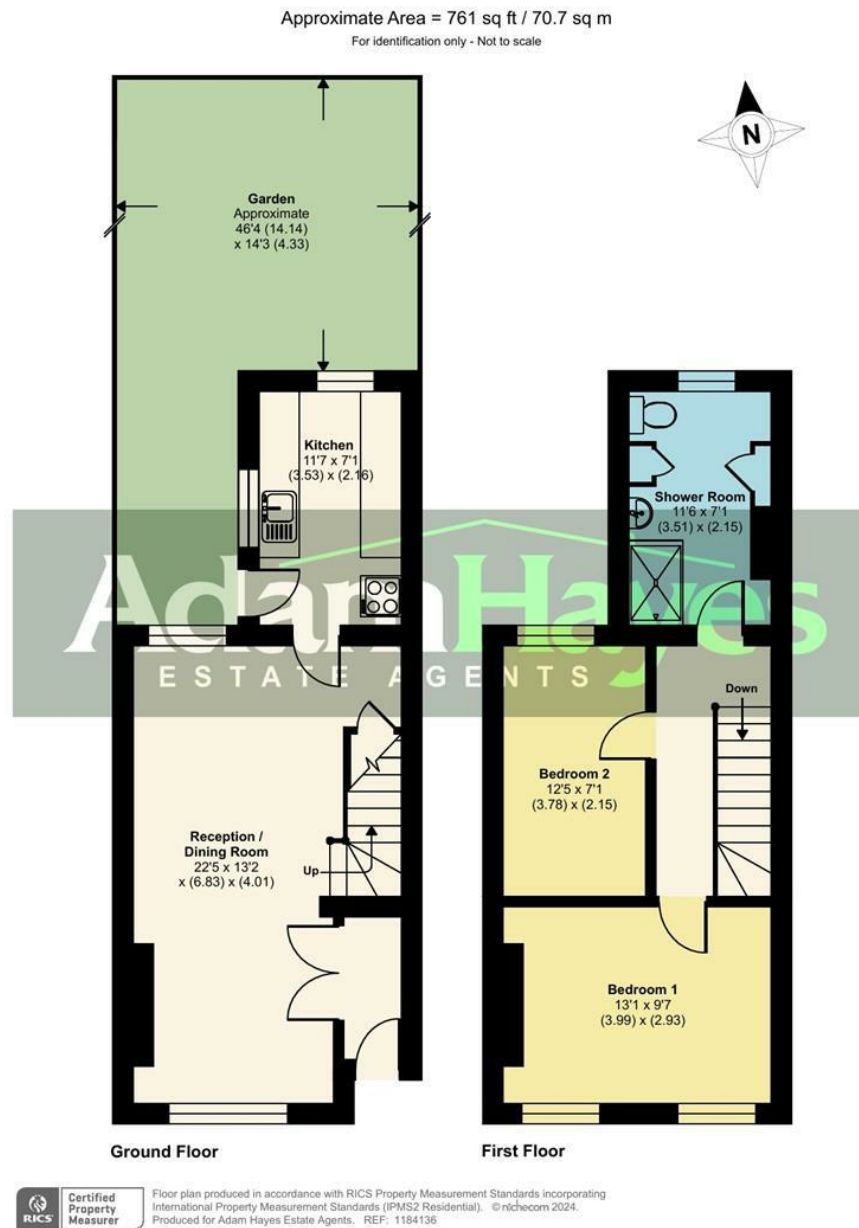
Property Description

Located in the heart of North Finchley and within a short walk from local shops, amenities, and Woodside Park Tube Station (Northern Line), is this unmodernised two double bedroom semi-detached house. The property is offered chain free and benefits from an approximately 22ft through lounge, filled with natural light leading to a separate kitchen and an approx. 46ft rear garden. The first floor comprises two generously sized bedrooms and a family bathroom with a three-piece suite. This property offers a fantastic opportunity for buyers seeking to transform it into their dream home. To fully appreciate the size, location, and potential of this property, an internal viewing is highly recommended through the vendor's sole agents, Adam Hayes Estate Agents.



Adam Hayes - North Finchley Office - Sales 365 Ballards Lane, North Finchley, London, N12 8LL

Tel: 020 8445 4008 Email: info@adam-hayes.co.uk Web: www.adam-hayes.co.uk



These particulars, whilst believed to be accurate, are set out as a general outline only for guidance and do not constitute any part of an offer or contract. Intending purchasers or prospective tenants should not rely on them as statements or representation of fact, but must satisfy themselves by inspection or otherwise as to their accuracy. We have not carried out a detailed survey, not tested the services, appliances and specific fittings. Room sizes should not be relied upon for carpets and furnishings. The measurements given are approximate. No person in this firm's employment has the authority to make or give any representation or warranty in respect of the property.