



Holly Park Road, Friern Barnet, N11

OIEO £750,000

 5 Bedrooms  3 Bathrooms  2 Receptions





Adam Hayes - North Finchley Office - Sales 365 Ballards Lane, North Finchley, London, N12 8LL  
Tel: 020 8445 4008 Email: [info@adam-hayes.co.uk](mailto:info@adam-hayes.co.uk) Web: [www.adam-hayes.co.uk](http://www.adam-hayes.co.uk)

Holly Park Road, Friern Barnet, N11

OIEO £750,000

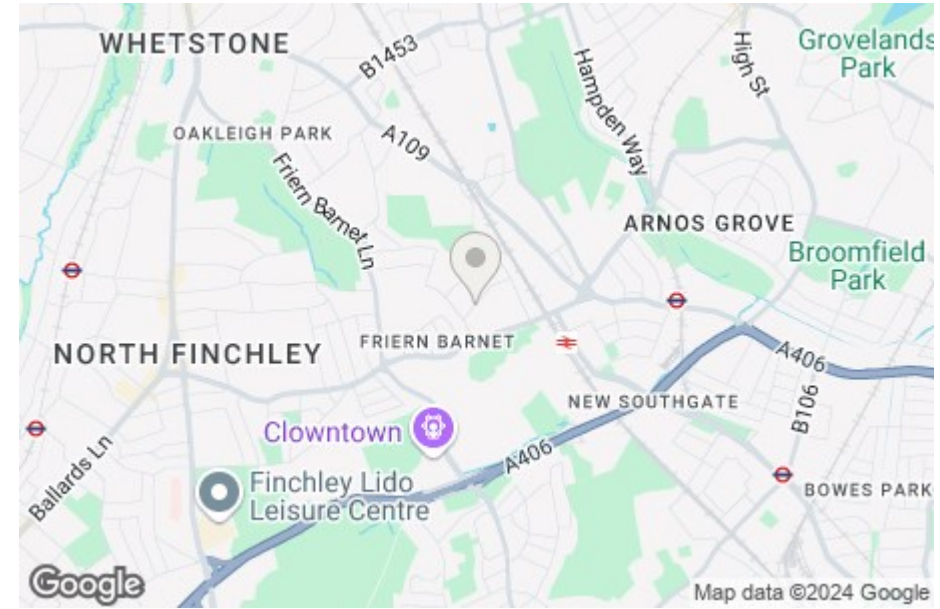
5 Bedrooms 3 Bathrooms 2 Receptions

### Key Features

- Five Bedrooms
- Newly Refurbished
- Modern Kitchen
- Chain Free
- Short Walk to New Southgate Station
- Off Street Parking

### Other Information

Tenure: Freehold  
Council Tax Band: E

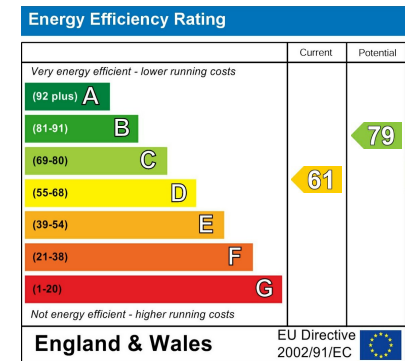


### Nearest Stations

New Southgate Station 0.3 miles  
Arnos Grove Station 0.7 miles  
Bounds Green Station 1.3 miles

### Property Description

Located on a sought after, tree-lined road, this newly refurbished five bedroom, three bathroom end-of-terrace family home offers a perfect blend of modern style and timeless charm. The property features a contemporary kitchen, a light-filled through lounge, five generously sized bedrooms, two modern bathrooms (including one en-suite), a patio garden, off-street parking, double glazed windows, and gas central heating. Further benefits include being within the catchment area for several popular schools, offered chain-free, and within a short walk of Bethune Park and New Southgate Overground Station. To fully appreciate the size, location, and character of this home, an internal viewing is highly recommended through the vendor's sole agents, Adam Hayes Estate Agents.



Adam Hayes - North Finchley Office - Sales 365 Ballards Lane, North Finchley, London, N12 8LL

Tel: 020 8445 4008 Email: info@adam-hayes.co.uk Web: www.adam-hayes.co.uk

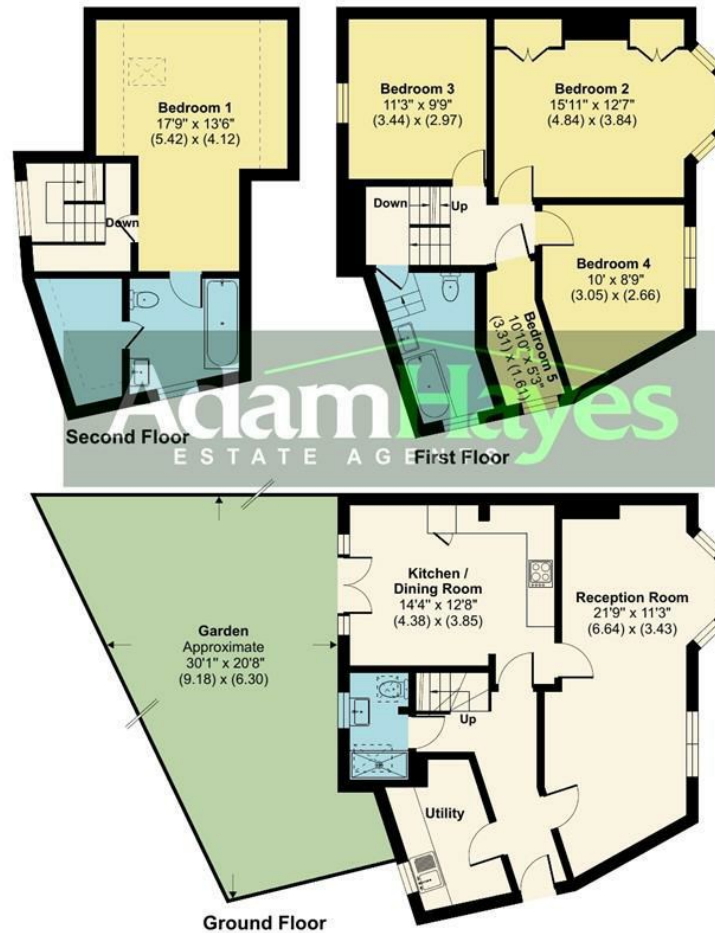




Approximate Area = 1516 sq ft / 140.8 sq m  
Limited Use Area(s) = 53 sq ft / 4.9 sq m  
Garage = 380 sq ft / 35.3 sq m  
Total = 1949 sq ft / 181 sq m

For identification only - Not to scale

Denotes restricted head height



Floor plan produced in accordance with RICS Property Measurement Standards incorporating International Property Measurement Standards (IPMS2 Residential). © nichecom 2024. Produced for Adam Hayes Estate Agents. REF: 1177941

These particulars, whilst believed to be accurate, are set out as a general outline only for guidance and do not constitute any part of an offer or contract. Intending purchasers or prospective tenants should not rely on them as statements or representation of fact, but must satisfy themselves by inspection or otherwise as to their accuracy. We have not carried out a detailed survey, not tested the services, appliances and specific fittings. Room sizes should not be relied upon for carpets and furnishings. The measurements given are approximate. No person in this firm's employment has the authority to make or give any representation or warranty in respect of the property.