








Adam Hayes - North Finchley Office - Lettings 365 Ballards Lane, North Finchley, London, N12 8LL
Tel: 020 8445 4008 Email: info@adam-hayes.co.uk Web: www.adam-hayes.co.uk

High Road, Whetstone, N20 9PL

£2,000 PCM

 2 Bedrooms  2 Bathrooms  1 Receptions

Key Features

- Two Bedroom Ground Floor Flat
- Purpose Built Apartment
- Two Bathrooms (One an ensuite shower)
- 23ft Lounge
- Modern Kitchen
- Own Garden
- Communal Parking First Come First Serve
- Note: Other flats will need to access the rear garden occasionally
- as their meters are all located there

Nearest Stations

- Totteridge & Whetstone

Property Description

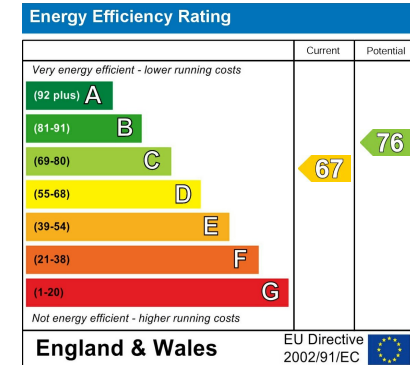
A stunning two bedroom two bathroom (one an en-suite shower) ground floor purpose built apartment with its own garden situated in this excellent location set back off Whetstone High Road and within easy access of Totteridge and Whetstone Tube Station and local amenities. The property benefits from an approximately 23ft lounge with a dining area, a modern fitted kitchen, a modern family bathroom and en-suite shower, wooden flooring, double glazing, gas central heating, an approximately 65ft rear garden with an outhouse and communal off street parking on a first come first serve basis. To really appreciate the size, condition and location, an internal viewing is highly recommended!!

Other Information

Council Tax Band: D

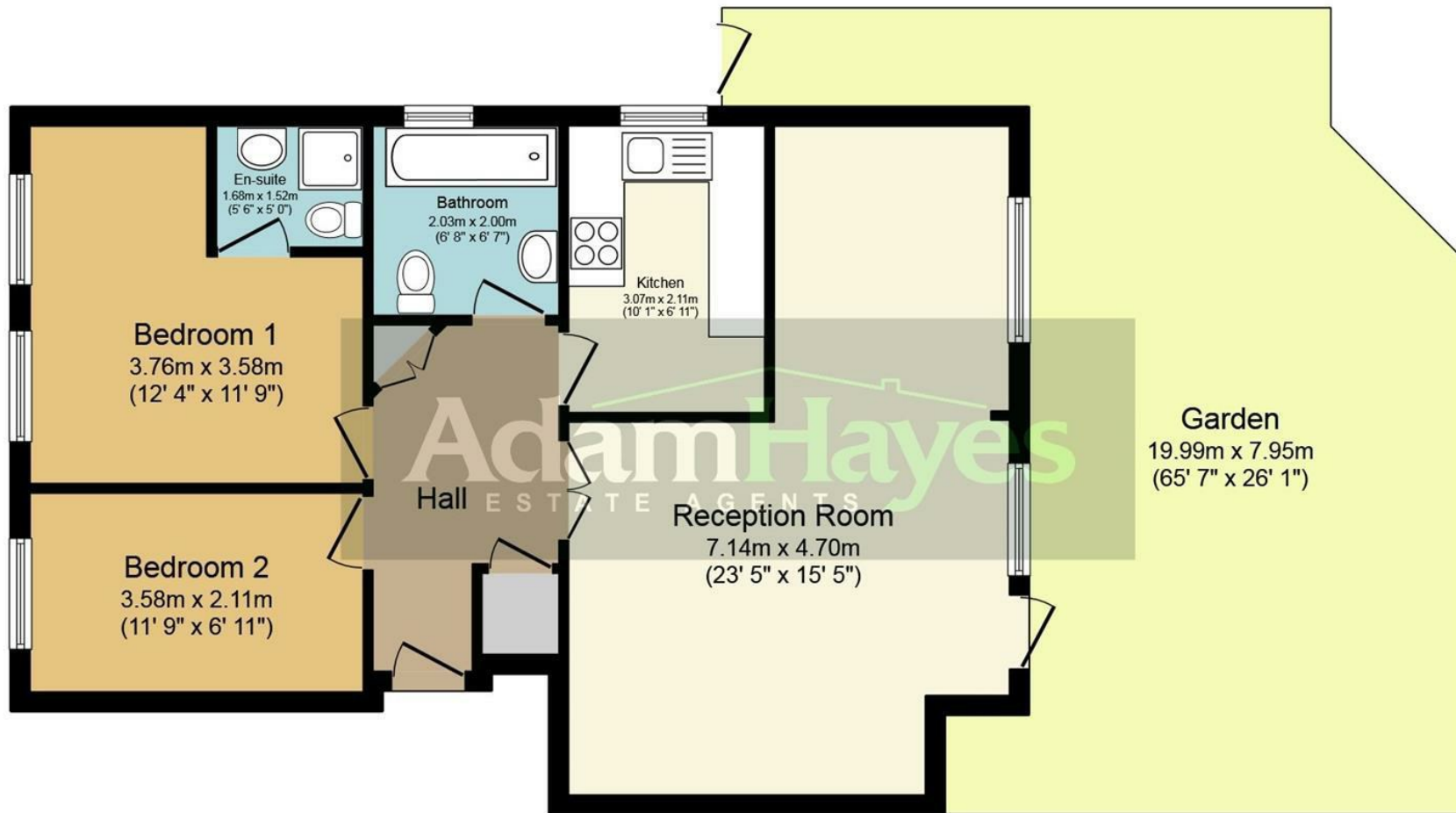
Length of Tenancy: Long Let

Deposit: £2,305



Adam Hayes - North Finchley Office - Lettings 365 Ballards Lane, North Finchley, London, N12 8LL

Tel: 020 8445 4008 Email: info@adam-hayes.co.uk Web: www.adam-hayes.co.uk



Floor Plan

Total floor area 67.4 sq.m. (726 sq.ft.) approx

This plan is for illustration purposes only and may not be representative of the property. Plan not to scale.

These particulars, whilst believed to be accurate, are set out as a general outline only for guidance and do not constitute any part of an offer or contract. Intending purchasers or prospective tenants should not rely on them as statements or representation of fact, but must satisfy themselves by inspection or otherwise as to their accuracy. We have not carried out a detailed survey, not tested the services, appliances and specific fittings. Room sizes should not be relied upon for carpets and furnishings. The measurements given are approximate. No person in this firm's employment has the authority to make or give any representation or warranty in respect of the property.