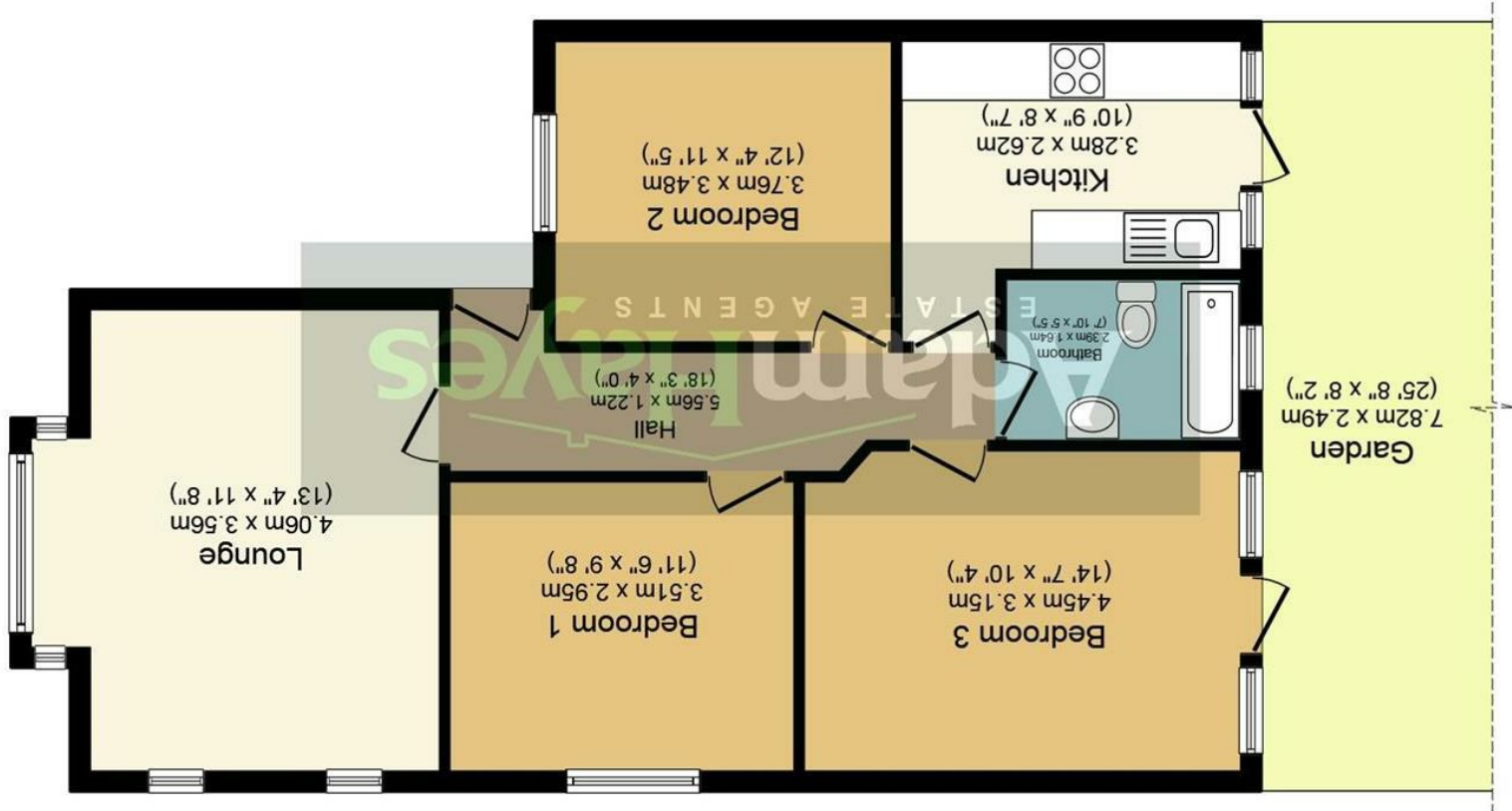


These particulars, whilst believed to be accurate, are set out as a general outline only for guidance and do not constitute any part of an offer or contract. Intending purchasers or prospective tenants should not rely on them as statements or representations or fact, but must satisfy themselves by inspection or otherwise as to their accuracy. We have not carried out a detailed survey, not tested the services, appliances and specific fittings. Room sizes should not be relied upon for carpets and furnishings. The measurements given are approximate. No person in this firm's employment has the authority to make or give any representation or warranty in respect of the property.

Total floor area 75.0 sq. m. (807 sq. ft.) approx  
 This plan is for illustration purposes only and may not be representative of the property. Plan not to scale.

## Floor Plan



Milton Avenue, Barnet, EN5 2EX

3 1 1

£2,400 PCM





Adam Hayes - North Finchley Office - Lettings 365 Ballards Lane, North Finchley, London, N12 8LL  
 Tel: 020 8445 4008 Email: info@adam-hayes.co.uk Web: www.adam-hayes.co.uk

Milton Avenue, Barnet, EN5 2EX  
 £2,400 PCM

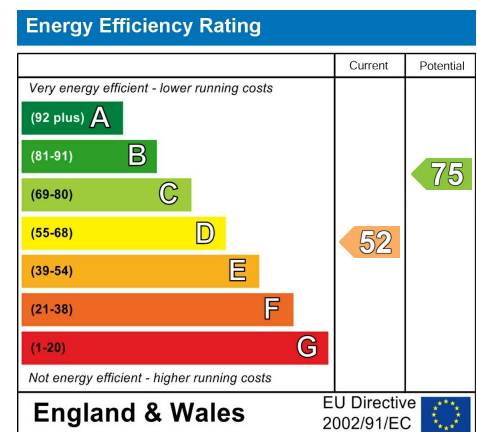
3 Bedrooms 1 Bathrooms 1 Receptions

### Key Features

- Three Bedroom Bungalow
- 14ft Reception
- Three Double Bedrooms
- Separate Kitchen
- Garage
- Private Garden

### Other Information

Council Tax Band: E  
 Length of Tenancy: Long Let  
 Deposit: £2,765



### Nearest Stations

- High Barnet

### Property Description

Welcome to this charming three-bedroom bungalow with a garage, nestled in a sought-after residential area. Conveniently located within easy reach of High Barnet Tube Station and local amenities, this delightful property offers a comfortable and inviting living experience. The bungalow features a spacious lounge of approximately 14 feet, perfect for relaxing and entertaining. The separate kitchen is well-appointed, catering to all your culinary needs. Each of the three bedrooms is generously sized, providing ample space. Outside, you'll find a lovely garden, ideal for outdoor activities. The property is also enhanced by double glazing and gas central heating, ensuring comfort throughout the year. To truly appreciate the size and location of this wonderful home, early viewings are highly recommended

Adam Hayes - North Finchley Office - Lettings 365 Ballards Lane, North Finchley, London, N12 8LL  
 Tel: 020 8445 4008 Email: info@adam-hayes.co.uk Web: www.adam-hayes.co.uk