




Holly Park Road, Friern Barnet, N11

 4 Bedrooms  3 Bathrooms  2 Receptions

Adam
ESTATE AGENTS  The Property Ombudsman

OIEO £750,000



Adam Hayes - North Finchley Office - Sales 365 Ballards Lane, North Finchley, London, N12 8LL
Tel: 020 8445 4008 Email: info@adam-hayes.co.uk Web: www.adam-hayes.co.uk

Holly Park Road, Friern Barnet, N11

OIEO £750,000

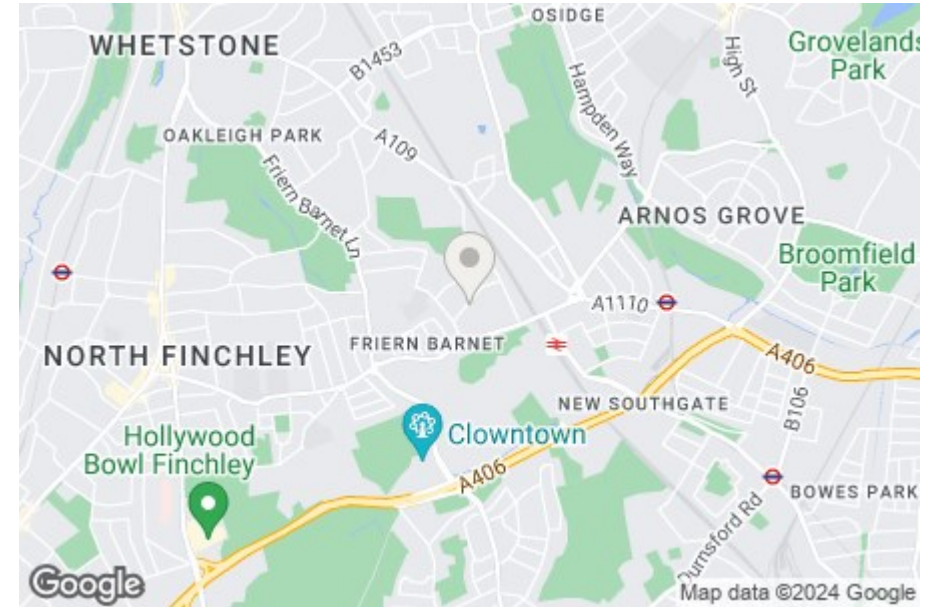
 4 Bedrooms  3 Bathrooms  2 Receptions

Key Features

- Four Bedrooms
- Three Bathrooms
- Chain Free
- Victorian Terraced House
- Modern Kitchen
- Popular School Catchment Area

Other Information

Tenure: Freehold
Council Tax Band: E



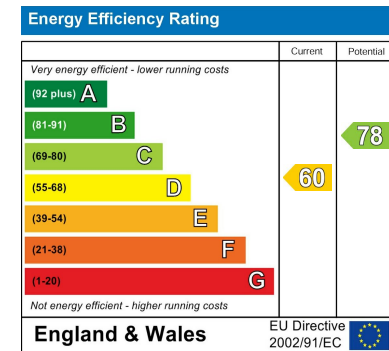
Nearest Stations

New Southgate Station 0.3 miles
Arnos Grove Station 0.7 miles
Bounds Green Station 1.3 miles

Property Description

Conveniently located on this popular tree lined road and set within the catchment area for a number of popular schools is this charming four bedrooms, three bathrooms Victorian family home. The property offers a harmonious blend of modern luxury and timeless character. The heart of the home is the sleek, contemporary kitchen, complete with integrated appliances and bi-folding doors that seamlessly merge indoor and outdoor living, leading to a well presented garden.

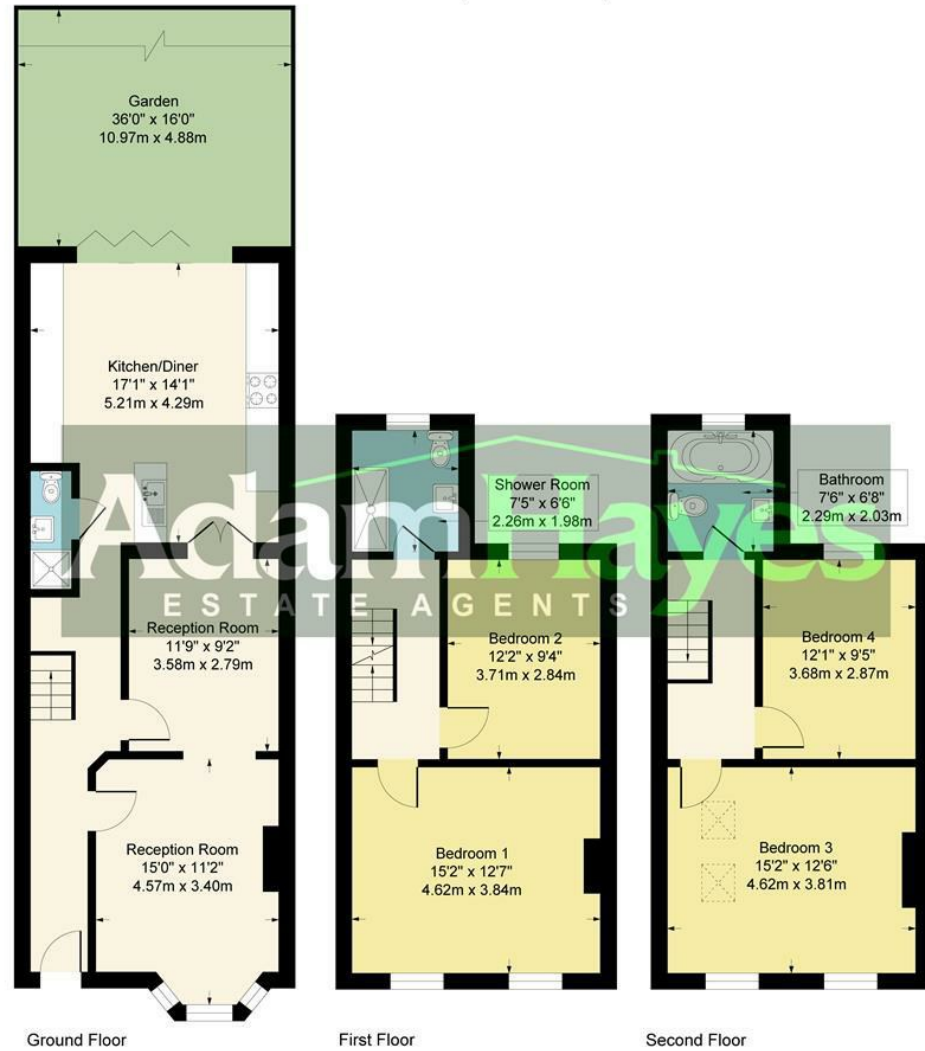
Throughout the home, original character features such as elegant fireplaces add a touch of warmth and charm. Whether it's cozying up by the fireplace or enjoying the tranquility of the garden oasis, this residence offers the perfect backdrop for family living and entertaining. To really appreciate the size, location and character an internal viewing is highly recommended via vendors sole agents Adam Hayes Estate Agents.



Adam Hayes - North Finchley Office - Sales 365 Ballards Lane, North Finchley, London, N12 8LL

Tel: 020 8445 4008 Email: info@adam-hayes.co.uk Web: www.adam-hayes.co.uk

Approximate Gross Internal Area
1439 sq ft - 134 sq m



Although every attempt has been made to ensure accuracy, all measurements are approximate.
This floorplan is for illustrative purposes only and not to scale.
Measured in accordance with RICS Standards.

These particulars, whilst believed to be accurate, are set out as a general outline only for guidance and do not constitute any part of an offer or contract. Intending purchasers or prospective tenants should not rely on them as statements or representation of fact, but must satisfy themselves by inspection or otherwise as to their accuracy. We have not carried out a detailed survey, not tested the services, appliances and specific fittings. Room sizes should not be relied upon for carpets and furnishings. The measurements given are approximate. No person in this firm's employment has the authority to make or give any representation or warranty in respect of the property.