

AdamHayes
ESTATE AGENTS



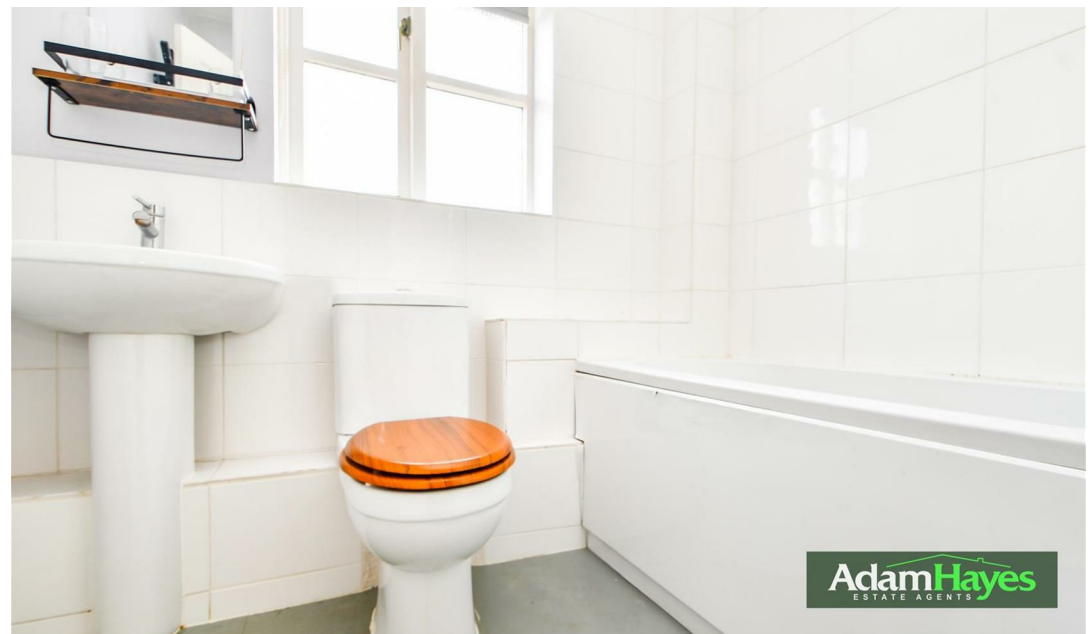
AdamHayes
ESTATE AGENTS



Hemingford Close, North Finchley, N12

£395,000

 1 Bedroom  1 Bathroom  1 Reception



Adam Hayes - North Finchley Office - Sales 365 Ballards Lane, North Finchley, London, N12 8LL
Tel: 020 8445 4008 Email: info@adam-hayes.co.uk Web: www.adam-hayes.co.uk

Hemingford Close, North Finchley, N12

£395,000

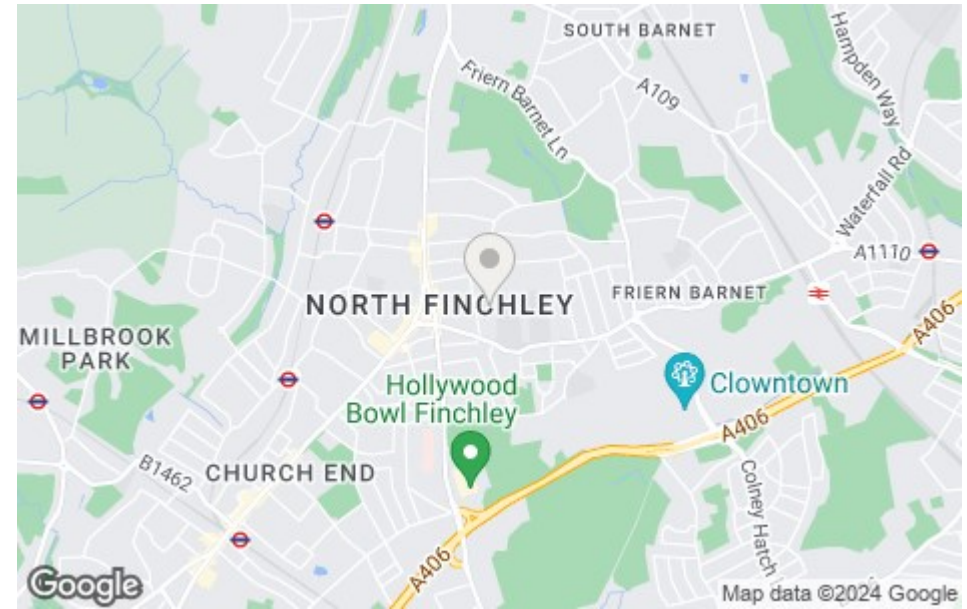
 1 Bedrooms  1 Bathrooms  1 Receptions

Key Features

- One Bedroom
- Semi Detached
- Chain Free
- Parking
- Loft Access
- 15ft Reception

Other Information

Tenure: Freehold
Council Tax Band: D

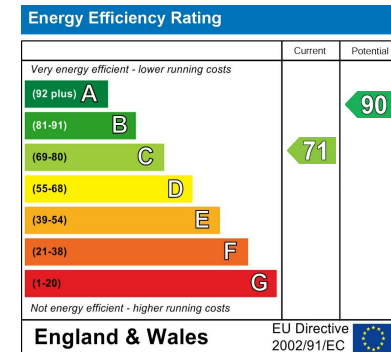


Nearest Stations

Woodside Park Station	0.7 miles
West Finchley Station	0.8 miles
Totteridge & Whetstone Station	1.2 miles

Property Description

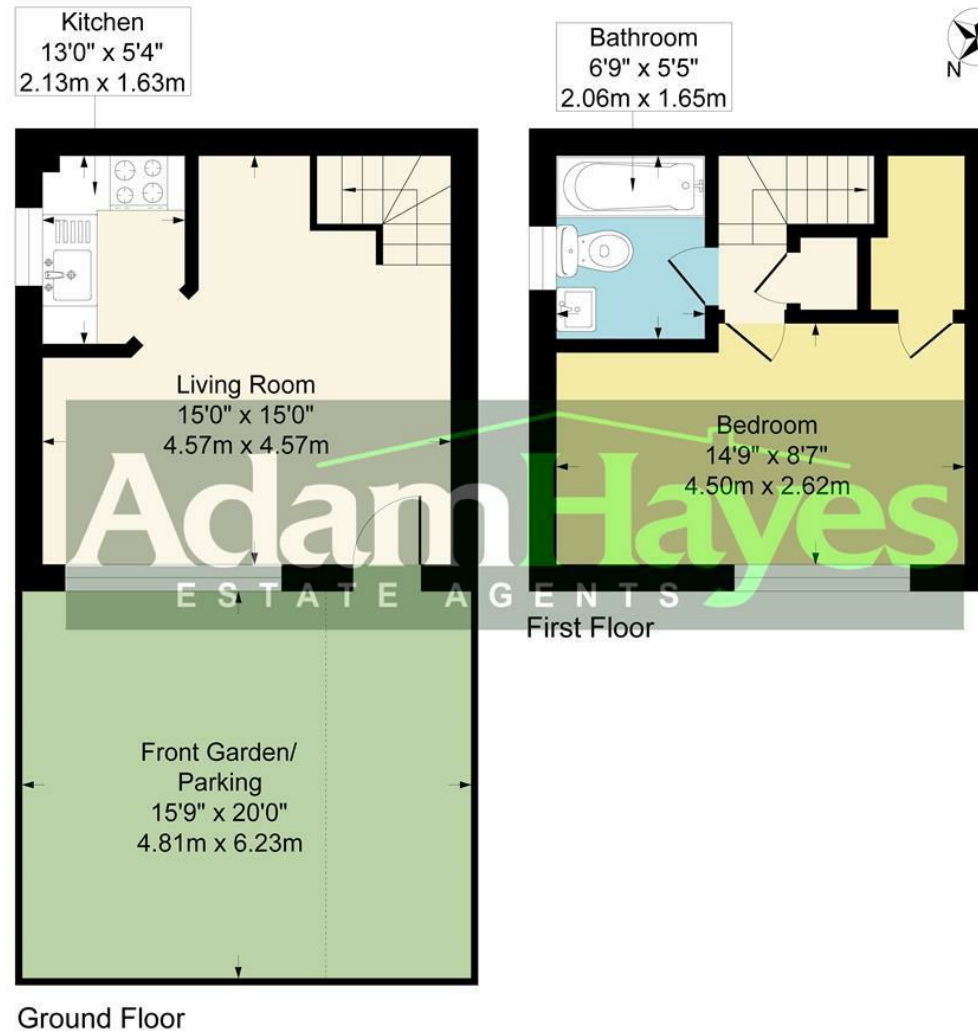
Situated in this popular residential turning off Fenstanton Avenue and set within walking distance to local shops and amenities is this well presented one bedroom semi detached house. The property is offered chain free and features a spacious reception room measuring approximately 15ft, a contemporary three-piece bathroom, off-street parking and access to a loft. To fully grasp the generous size, convenient location, and impressive condition of this property, we strongly recommend an internal viewing through the vendors sole agents, Adam Hayes Estate Agents.



Adam Hayes - North Finchley Office - Sales 365 Ballards Lane, North Finchley, London, N12 8LL

Tel: 020 8445 4008 Email: info@adam-hayes.co.uk Web: www.adam-hayes.co.uk

**Approximate Gross Internal Area
446 sq ft - 41 sq m**



Although every attempt has been made to ensure accuracy, all measurements are approximate.
This floorplan is for illustrative purposes only and not to scale.
Measured in accordance with RICS Standards.

These particulars, whilst believed to be accurate, are set out as a general outline only for guidance and do not constitute any part of an offer or contract. Intending purchasers or prospective tenants should not rely on them as statements or representation of fact, but must satisfy themselves by inspection or otherwise as to their accuracy. We have not carried out a detailed survey, not tested the services, appliances and specific fittings. Room sizes should not be relied upon for carpets and furnishings. The measurements given are approximate. No person in this firm's employment has the authority to make or give any representation or warranty in respect of the property.