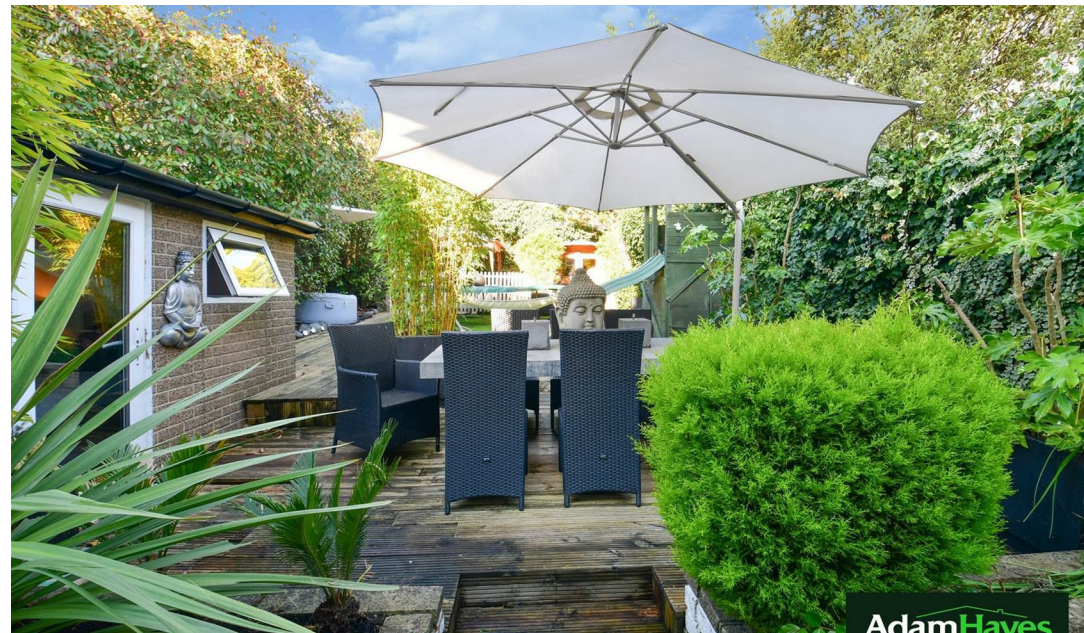
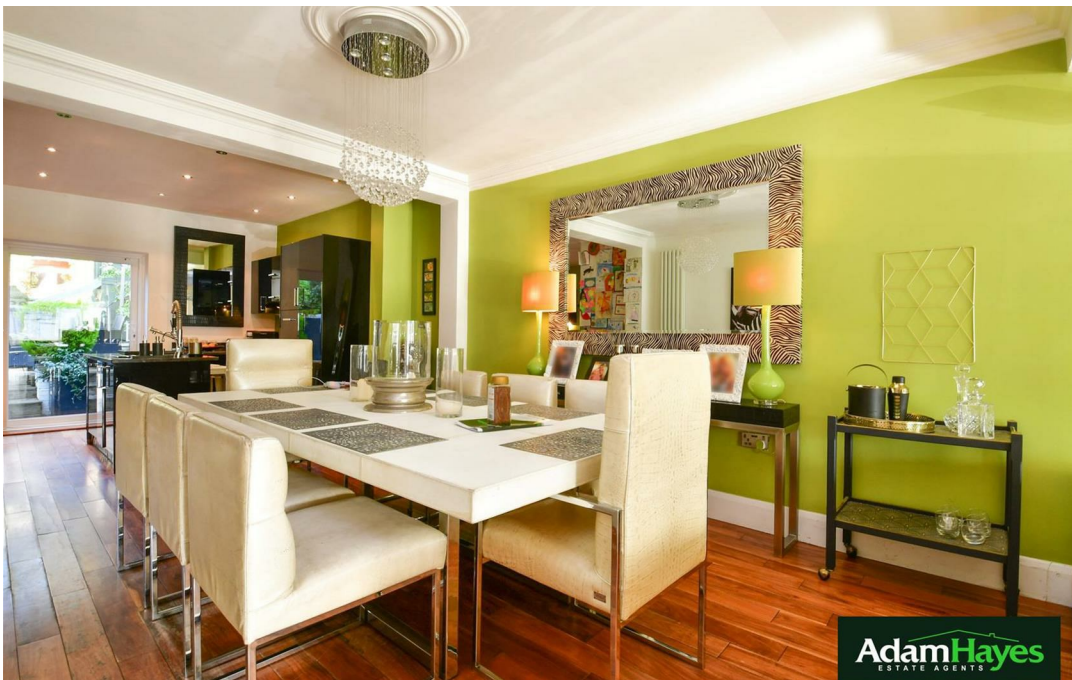




Ravensdale Avenue, North Finchley, N12

 4 Bedrooms  3 Bathrooms  2 Receptions

OIEO £1,100,000



Adam Hayes - North Finchley Office - Sales 365 Ballards Lane, North Finchley, London, N12 8LL
Tel: 020 8445 4008 Email: info@adam-hayes.co.uk Web: www.adam-hayes.co.uk

Ravensdale Avenue, North Finchley, N12

OIEO £1,100,000

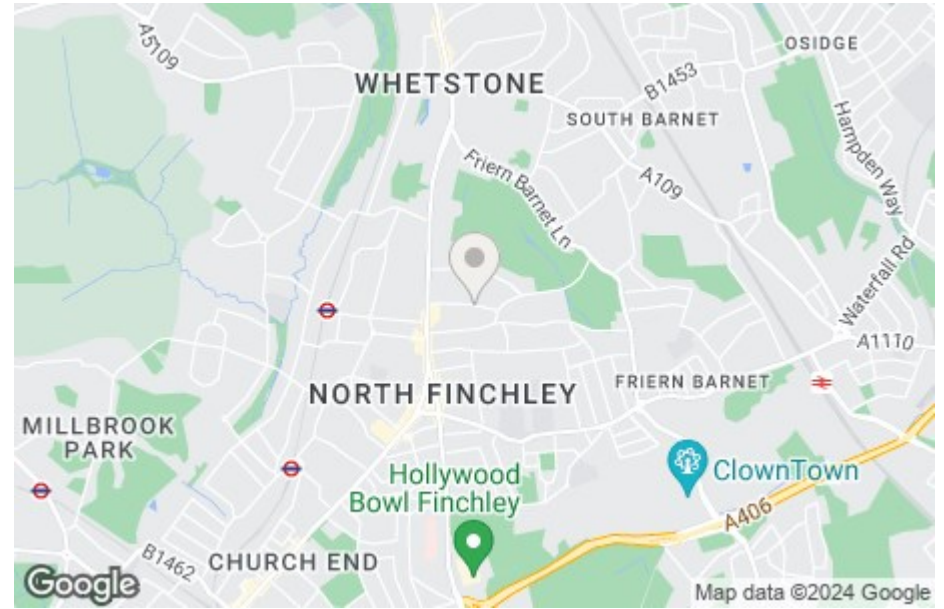
 4 Bedrooms  3 Bathrooms  2 Receptions

Key Features

- Four Bedrooms
- Three Bathrooms
- Modern Kitchen
- Mature Garden
- Parking
- Utility Room

Other Information

Tenure: Freehold
Council Tax Band: G

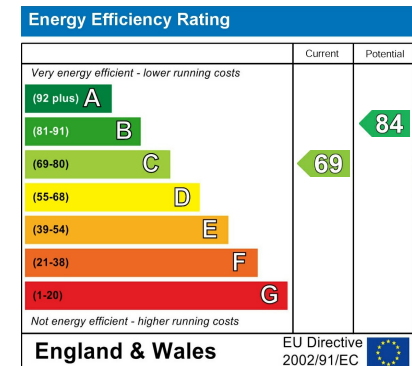


Nearest Stations

Woodside Park Station	0.5 miles
Totteridge & Whetstone Station	0.9 miles
West Finchley Station	0.9 miles

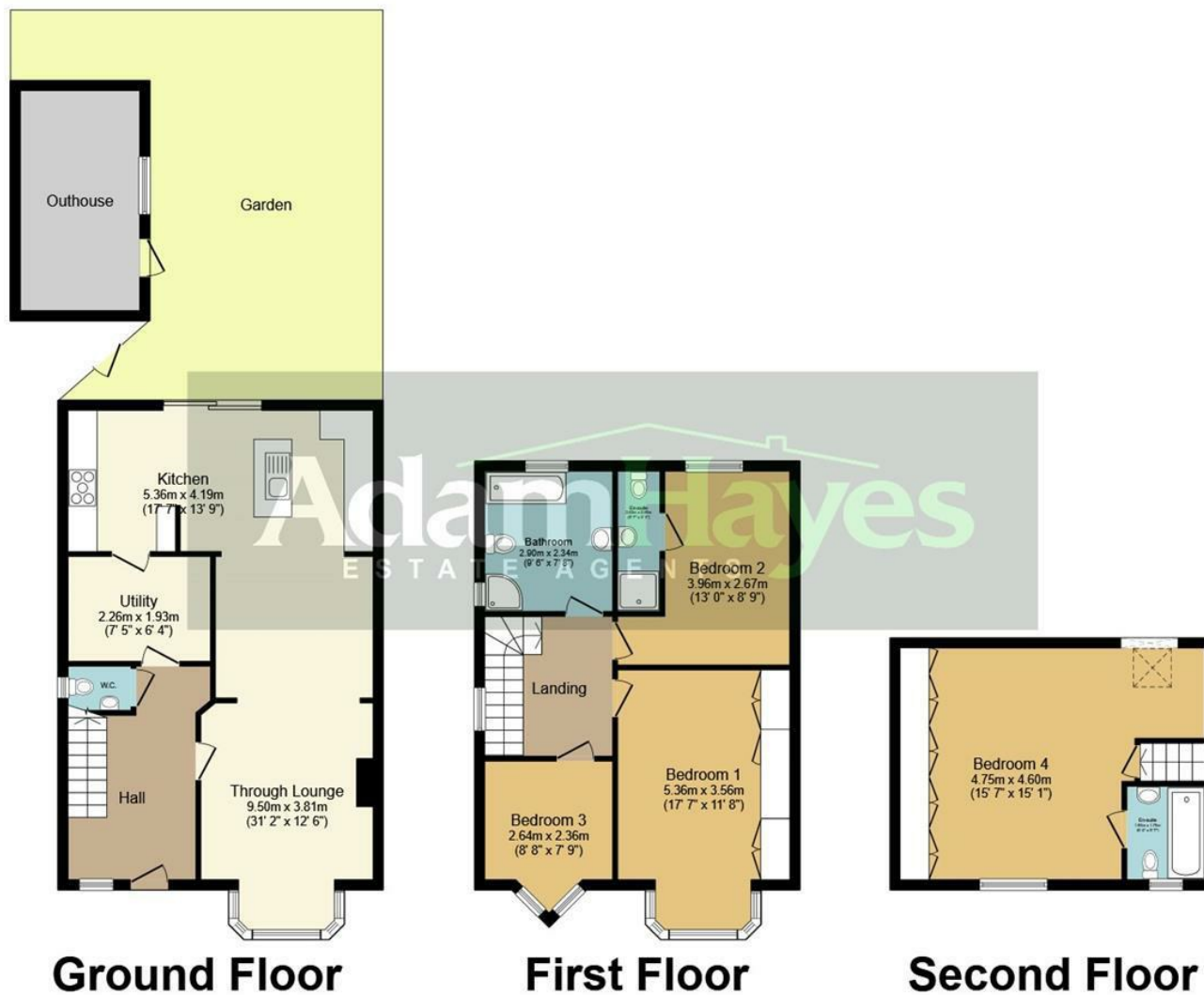
Property Description

Situated in this popular tree lined residential location off North Finchley High Road and within minutes' walk of Friary Park is this well presented and extended four bedroom, three bathroom semi detached house. The property is offered chain free and benefits from an approximately 31ft through lounge, a modern kitchen diner with fitted appliances and granite worktops, a mature rear garden with additional outhouse and off street parking for 2/3 cars. To really appreciate the size, location, condition and further potential an internal viewing is highly recommended via vendors sole agents Adam Hayes Estate Agents.



Adam Hayes - North Finchley Office - Sales 365 Ballards Lane, North Finchley, London, N12 8LL

Tel: 020 8445 4008 Email: info@adam-hayes.co.uk Web: www.adam-hayes.co.uk



Total floor area 148.6 sq.m. (1,600 sq.ft.) approx

This plan is for illustration purposes only and may not be representative of the property. Plan not to scale.

These particulars, whilst believed to be accurate, are set out as a general outline only for guidance and do not constitute any part of an offer or contract. Intending purchasers or prospective tenants should not rely on them as statements or representation of fact, but must satisfy themselves by inspection or otherwise as to their accuracy. We have not carried out a detailed survey, not tested the services, appliances and specific fittings. Room sizes should not be relied upon for carpets and furnishings. The measurements given are approximate. No person in this firm's employment has the authority to make or give any representation or warranty in respect of the property.