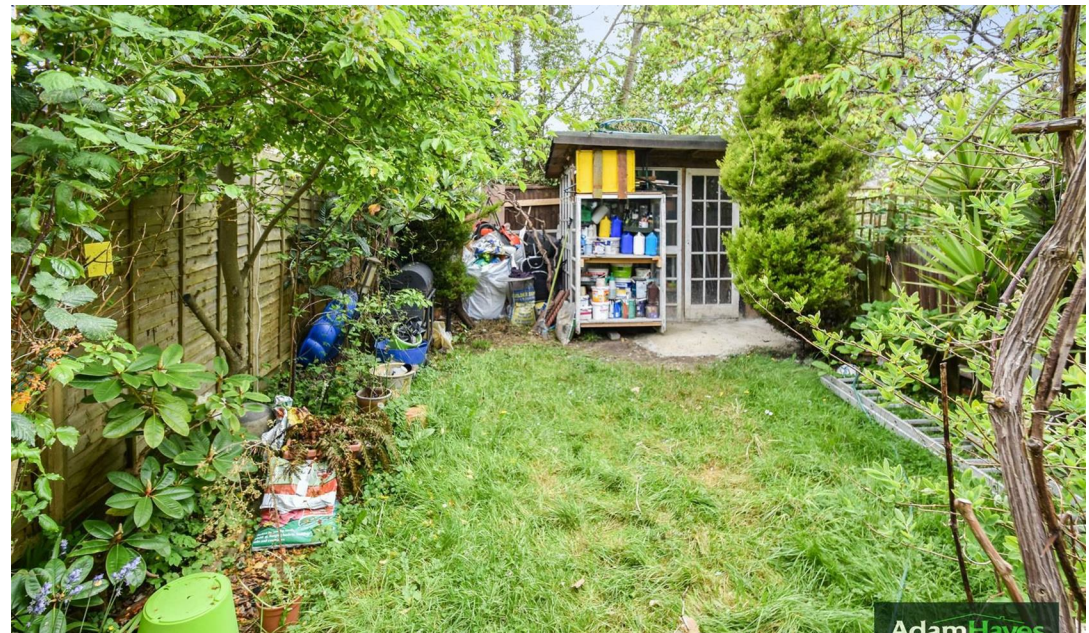




Woodhouse Road, North Finchley, N12

 3 Bedroom  2 Bedroom  1 Reception







Adam Hayes - North Finchley Office - Sales 365 Ballards Lane, North Finchley, London, N12 8LL  
Tel: 020 8445 4008 Email: [info@adam-hayes.co.uk](mailto:info@adam-hayes.co.uk) Web: [www.adam-hayes.co.uk](http://www.adam-hayes.co.uk)



# Woodhouse Road, North Finchley, N12

## OIEO £675,000

 3 Bedrooms  2 Bathrooms  2 Receptions

### Key Features

- Three Bedrooms
- Two Bathrooms
- Terraced House
- Wren Catchment
- Off Street Parking
- Chain Free
- Freehold
- Council Tax Band: E

### Other Information

Tenure: Freehold  
Council Tax Band: E

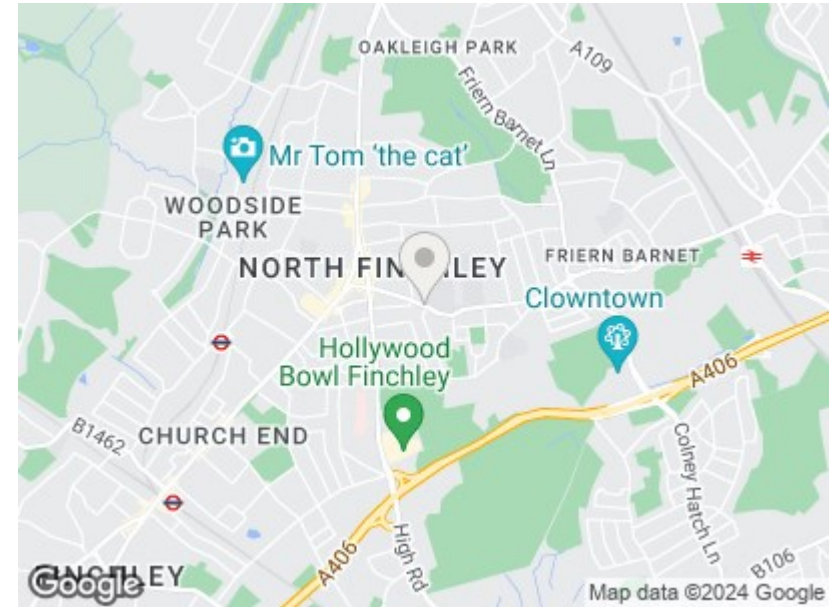
### Nearest Stations

Woodside Park Station	0.6 miles
West Finchley Station	0.7 miles
Totteridge & Whetstone Station	1.1 miles

### Property Description

Set back off Woodhouse Road and set within the catchment area for a number of popular schools including the Wren Academy is this extended three bedroom, two bathroom terraced house. The property is offered chain free and benefits from two reception reception rooms, an approximately 40ft rear garden, a downstairs shower room, off street parking and potential to convert the loft (STPP).

To really appreciate the size, location and potential an internal viewing is highly recommended via vendors sole agents Adam Hayes Estate Agents.



Adam Hayes - North Finchley Office - Sales 365 Ballards Lane, North Finchley, London, N12 8LL

Tel: 020 8445 4008 Email: [info@adam-hayes.co.uk](mailto:info@adam-hayes.co.uk) Web: [www.adam-hayes.co.uk](http://www.adam-hayes.co.uk)



Total floor area 102.5 sq.m. (1,103 sq.ft.) approx

This plan is for illustration purposes only and may not be representative of the property. Plan not to scale.

These particulars, whilst believed to be accurate, are set out as a general outline only for guidance and do not constitute any part of an offer or contract. Intending purchasers or prospective tenants should not rely on them as statements or representation of fact, but must satisfy themselves by inspection or otherwise as to their accuracy. We have not carried out a detailed survey, not tested the services, appliances and specific fittings. Room sizes should not be relied upon for carpets and furnishings. The measurements given are approximate. No person in this firm's employment has the authority to make or give any representation or warranty in respect of the property.