



Ashbourne Close, North Finchley, N12

 2 Bedrooms  1 Bathroom  1 Reception

Guide Price £375,000



North Finchley Office

331 Ballards Lane, London, N12 8LT

Tel: 0208 445 4008 Email: info@adam-hayes.co.uk Web: www.adam-hayes.co.uk

Ashbourne Close, North Finchley, N12

Guide Price £375,000

 2 Bedrooms  1 Bathroom  1 Reception

Key Features

- Two Double Bedroom
- Top Floor (Fourth Floor)
- 17ft Reception
- Three Piece Bathroom
- Entry phone System
- Balcony

Nearest Stations

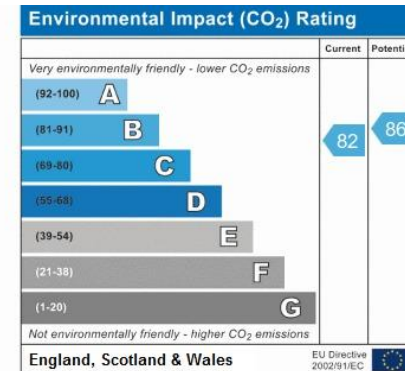
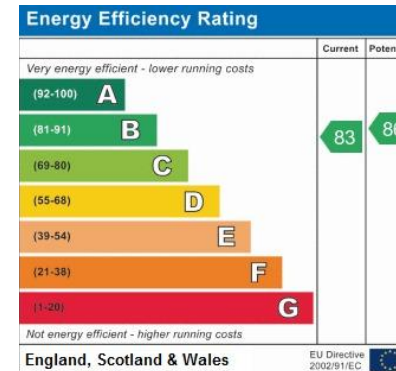
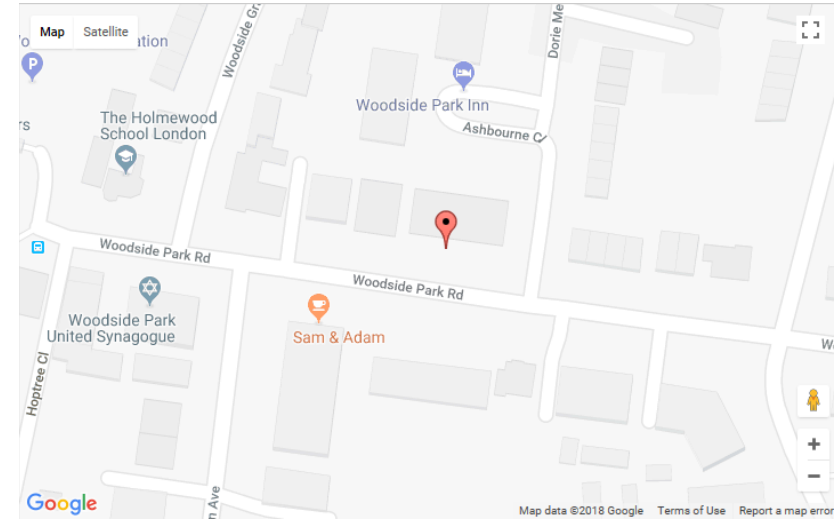
Woodside Park (0.1 miles)

West Finchley (0.6 miles)

Totteridge & Whetstone (0.9 miles)

Property Description

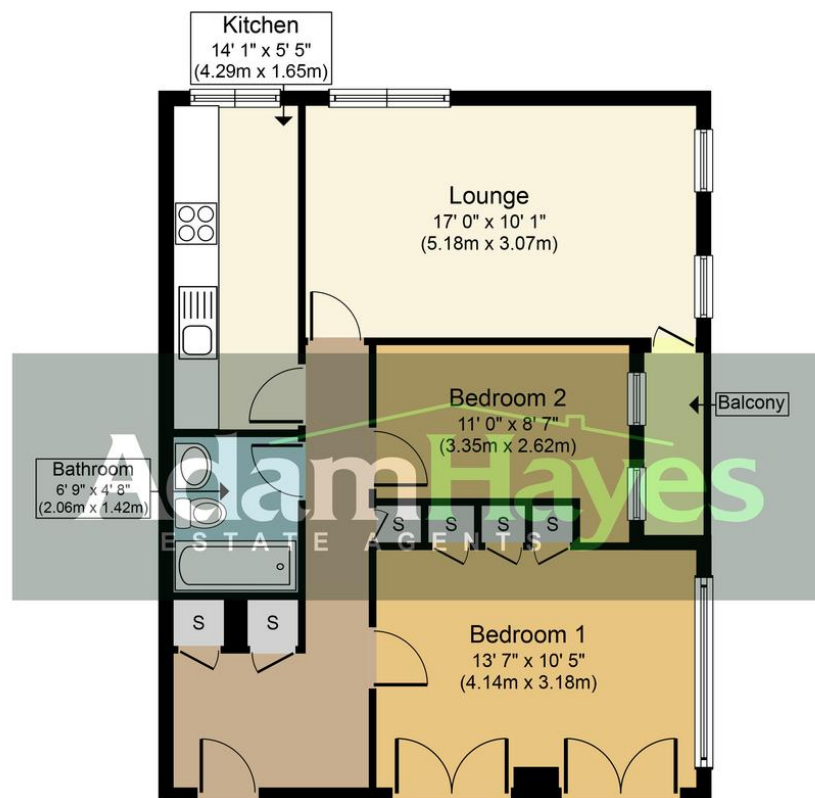
Conveniently located within 0.1 miles away from Woodside Park Tube Station and within walking distance to North Finchley High Roads multiple shops and amenities is this well presented two double bedroom top floor (fourth floor) apartment. The property benefits from an approximately 17ft reception room, double glazing, balcony, laminate flooring, a three piece bathroom suite and a security entryphone system. However to really appreciate, the location, size and potential an internal viewing is highly recommended via vendors sole agents Adam Hayes Estate Agents on 020 8445 4008.



North Finchley Office

331 Ballards Lane, London, N12 8LT

Tel: 0208 445 4008 Email: info@adam-hayes.co.uk Web: www.adam-hayes.co.uk



Approx. Gross Internal Floor Area 646 sq. ft. / 60.0 sq. m.

Whilst every attempt has been made to ensure the accuracy of the floor plan contained here, measurements of doors, windows, rooms and any other items are approximate and no responsibility is taken for any error, omission, or mis-statement. This plan is for illustrative purposes only and should be used as such by any prospective purchaser or tenant. The services, systems and appliances shown have not been tested and no guarantee as to their operability or efficiency can be given.
Copyright V360 Ltd 2017 | www.houseviz.com

These particulars, whilst believed to be accurate are set out as a general outline only for guidance and do not constitute any part of an offer or contract. Intending purchasers should not rely on them as statements or representation of fact, but must satisfy themselves by inspection or otherwise as to their accuracy. We have not carried out a detailed survey not tested the services, appliances and specific fittings. Room sizes should not be relied upon for carpets and furnishings. The measurements given are approximate. No person in this firms employment has the authority to make or give any representation or warranty in respect of the property.