



4 Shakespeare Court, Back Of Avon, Tewkesbury, GL20 5UP

£210,000

FOR SALE



- FIRST FLOOR
- BEAUTIFUL VIEWS
- SINGLE GARAGE
- COUNCIL TAX BAND - C
- 2 BEDROOMS
- CONVENIENT LOCATION
- EPC RATING - C

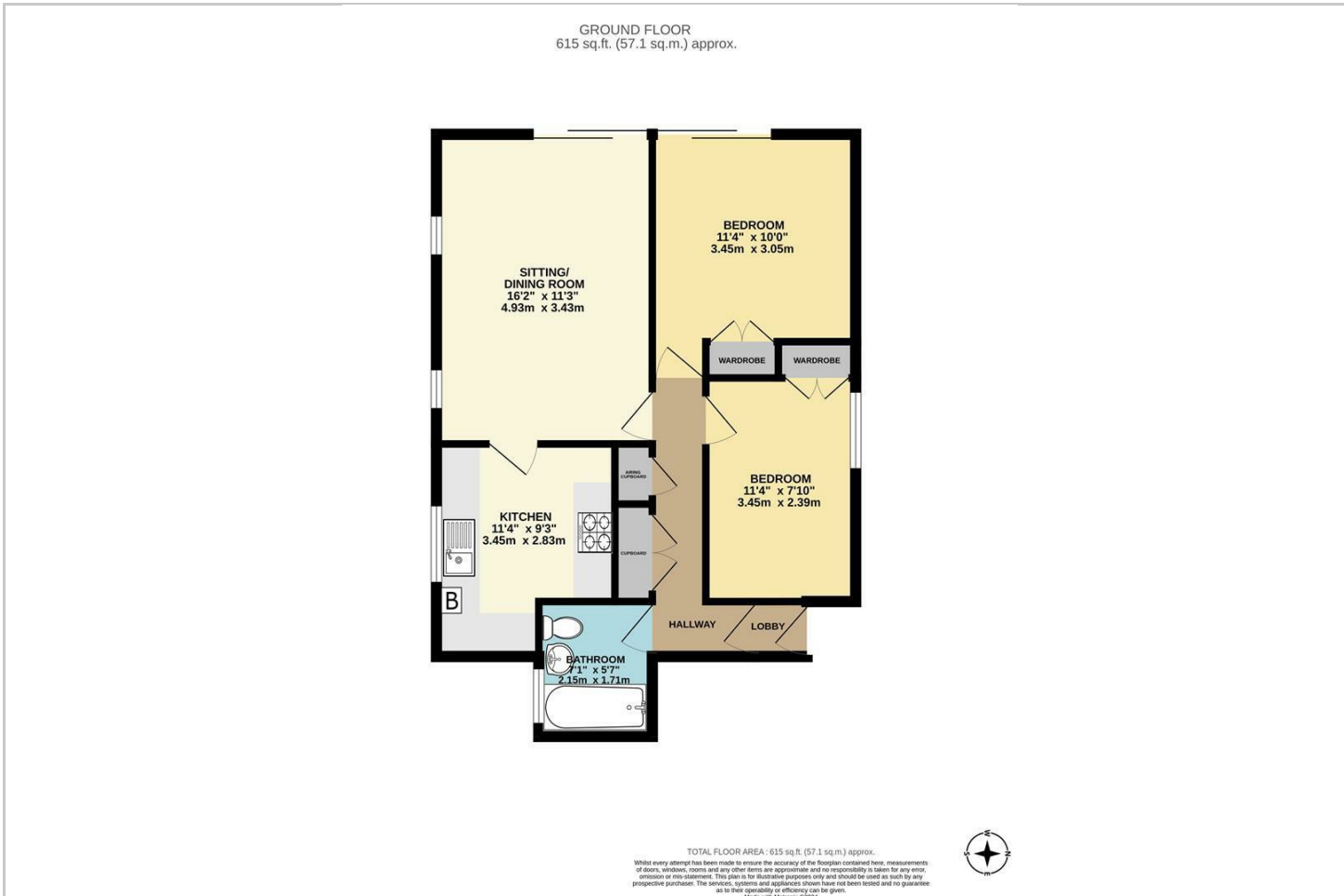


EXPERIENCE THE BEAUTY OF THE MEDIEVAL TOWN OF TEWKESBURY IN THIS 2-BEDROOM FIRST-FLOOR FLAT, OFFERING BREATH-TAKING RIVER AVON VIEWS AND PRACTICAL ELEGANCE WITH A SPACIOUS GARAGE AND AMPLE STORAGE SOLUTIONS.

Experience the magic of Tewkesbury's riverside, where each day is framed by the beauty of the River Avon. A truly unique opportunity to make this breath-taking view a daily part of your life.

Benefiting from its prime location, residents will find themselves in close proximity to local amenities, making daily life a seamless experience. Immerse yourself in the rich tapestry of Tewkesbury's medieval heritage, with shops, cafes, and restaurants just a stone's throw away.

Elevating the experience, this flat comes complete with a single garage, providing a secure location to house your vehicle and an abundance of storage. All owners within the building have purchased the leasehold of the block and so this apartment is being sold as FREEHOLD.



Energy Efficiency Rating		Current	Potential
Very energy efficient - lower running costs			
(92 plus)	A		
(81-91)	B		
(69-80)	C	69	76
(55-68)	D		
(39-54)	E		
(21-38)	F		
(1-20)	G		
Not energy efficient - higher running costs			
England & Wales		EU Directive 2002/91/EC	