



32 Massey Road, Gloucester, Gloucestershire, GL1 4LQ

£1,100 PCM

TO LET



- AVAILABLE NOW
- OPEN PLAN LOUNGE KITCHEN
- ON ROAD PARKING
- COURTYARD GARDEN
- COUNCIL TAX BAND B
- BUNGALOW
- GAS CENTRAL HEATING
- TWO DOUBLE BEDROOMS
- DOUBLE-GLAZED
- EPC C

THE PROPERTY

Chosen Estate Agents are delighted to present this deceptively spacious two bedroom bungalow that is PET FRIENDLY. Set well back off the road nestled behind a block of 4 flats. The bungalow offers open plan kitchen/lounge, two double bedrooms bathroom with shower over bath and courtyard garden.

Also benefits from double-glazing and is warmed by gas-fired central heating throughout

On street parking only

Holding Deposit: £253.00 based on 1 weeks' rent of asking price

Security Deposit: £1269.00 based on 5 weeks' rent of asking price or 1 weeks rent + vat (flatfair)

Electricity supply: Mains

Water supply: Mains

Sewerage: Mains

Heating: Gas Central Heating

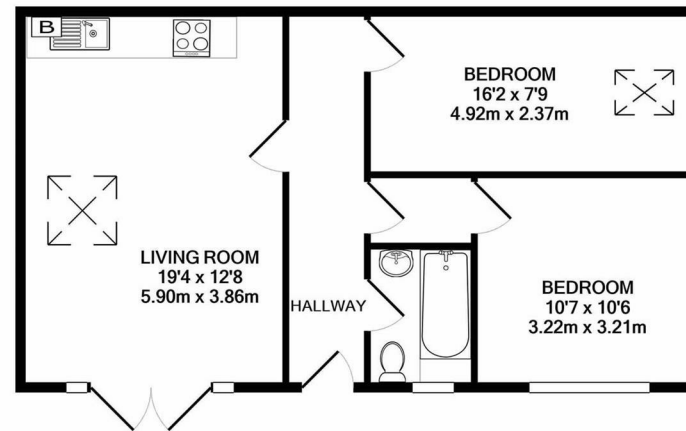
EPC: C

Mobile phone coverage: i.e EE, Vodafone, Three, O2

If satisfactory references are not obtained or you withdraw your application any financial loss to Chosen Estate Agents or the Landlord will be deducted from your holding deposit. If you or your guarantor provides information that is inaccurate, false, incomplete, or adverse credit not being disclosed then we may retain your holding deposit and reject your application.

SITUATION

A newly renovated bungalow for rent in Massey Road Gloucester GL1. Contact Farr & Farr on 01452 857421.



TOTAL APPROX. FLOOR AREA 580 SQ.FT. (53.9 SQ.M.)

Whilst every attempt has been made to ensure the accuracy of the floor plan contained here, measurements of doors, windows, rooms and any other items are approximate and no responsibility is taken for any error, omission, or mis-statement. This plan is for illustrative purposes only and should be used as such by any prospective purchaser. The services, systems and appliances shown have not been tested and no guarantee as to their operability or efficiency can be given

Made with Metropix ©2020



Directions

2 Church Road, Churchdown, Gloucestershire, GL3 2ER

Tel: 01452 857421 Email: info@chosenestateagents.co.uk www.chosenestateagents.co.uk