



70 Cheltenham Road East, Churchdown, Gloucester, GL3 1AD

£360,000

CHOSEN
ESTATE AGENTS

THE PROPERTY

Nestled on the ever popular Cheltenham Road East in Churchdown, this extended three-bedroom semi-detached home is a true gem waiting to be discovered. Boasting a blend of modern open-plan living and traditional charm, this property offers a delightful living experience.

As you step inside, you are greeted by a fantastic open plan kitchen-dining-living space, perfect for entertaining guests or simply relaxing with your loved ones. There is also a utility room, separate living room, and downstairs WC.

The property features three cosy bedrooms, including two fantastic double bedrooms, providing ample space for a growing family.

The outhouse in the rear garden, complete with power supply, presents a fantastic opportunity for a home office or a peaceful retreat away from the main house.

One of the highlights of this property is the generous enclosed rear garden, offering a private oasis for outdoor gatherings or simply unwinding after a long day.

Parking will never be an issue with a driveway that can accommodate two/three vehicles, providing convenience for you and your guests.

If you are looking for a characterful home with modern amenities, ample outdoor space, and a convenient location, this charming semi-detached home on Cheltenham Road East is the perfect choice.

Agents Note.

Freehold.

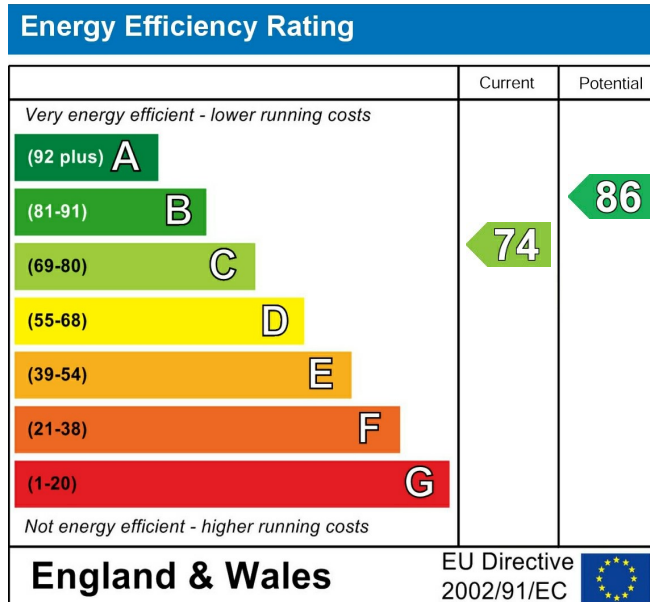
EPC Rating: C74

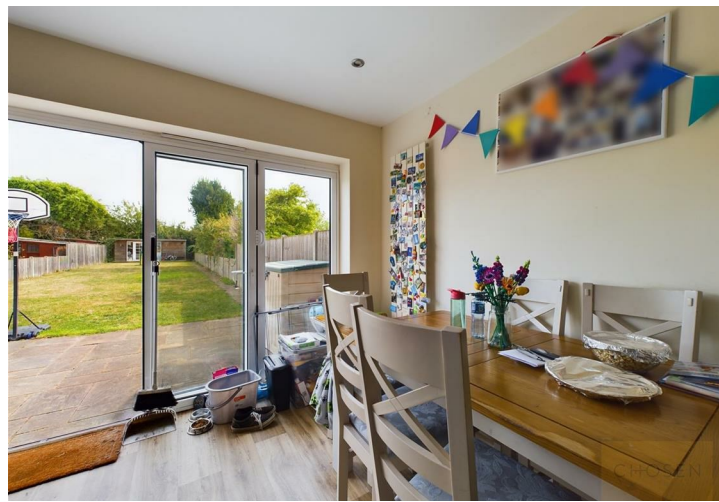
Tewkesbury Borough Council Band: C

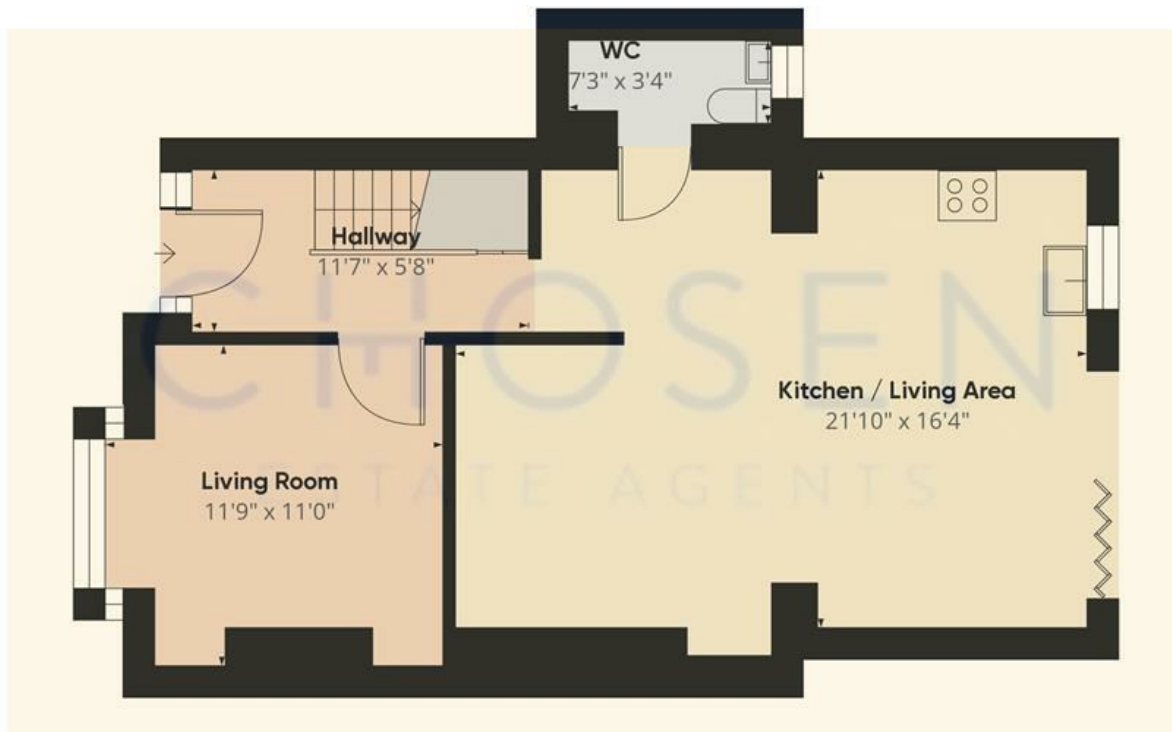
Mains Gas, Electric and Water are connected.

Fibre Broadband is available in the area.

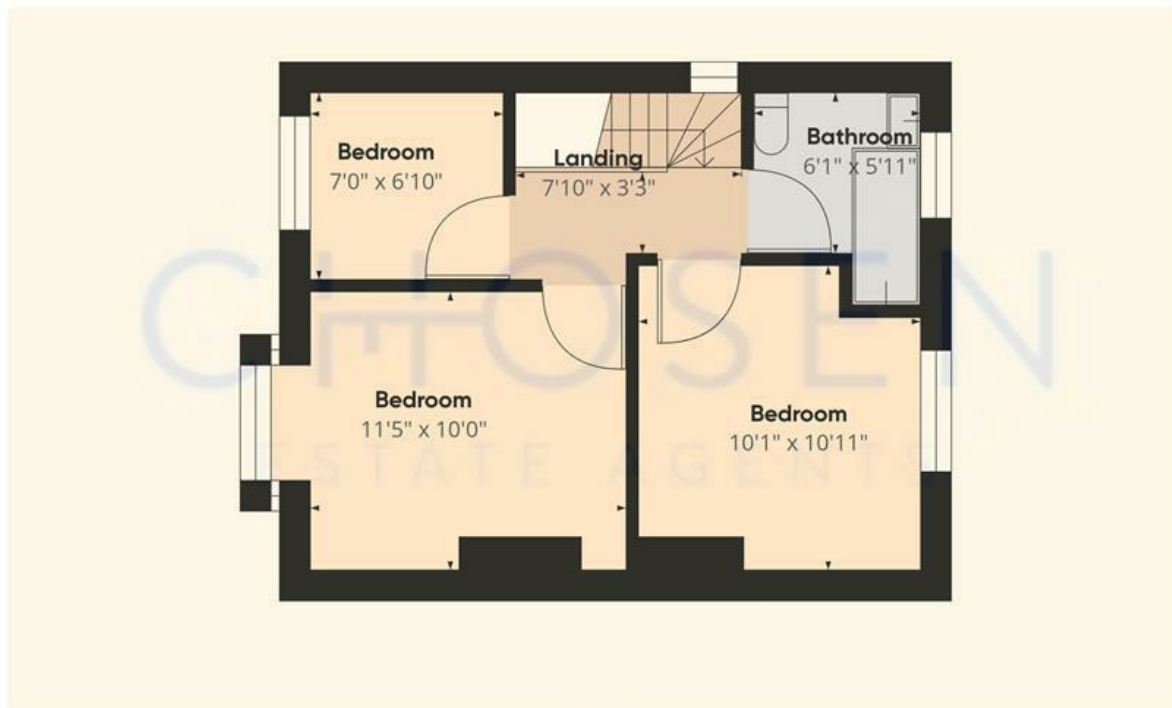
- Three Bedroom Semi-Detached Home
- Single Storey Extension To The Rear
- Generous Rear Garden
- Open-Plan Living
- Driveway Providing Off Road Parking For Multiple Vehicles
- Outhouse In Garden With Power
- EPC Rating: C74
- Council Tax Band: C







Floor 0



Floor 1

Approximate total area⁽¹⁾

887.7 ft²

(1) Excluding balconies and terraces

While every attempt has been made to ensure accuracy, all measurements are approximate, not to scale. This floor plan is for illustrative purposes only.

Calculations are based on RICS IPMS 3C standard.

GIRAFFE360