



17 Odessa Park, Gloucester Road, Tewkesbury, GL20 7DA

£155,000

CHOSEN
ESTATE AGENTS

THE PROPERTY

Welcome to this charming park home located in the picturesque Odessa Park on Gloucester Road, Tewkesbury.

The property features an open plan living diner, creating a warm and inviting atmosphere for you to enjoy. A light and airy kitchen comprising integrated fridge freezer and cooker. There is also an incredibly useful utility room boasting plumbing for a washing machine. With two sizeable bedrooms, there is ample space for a small family or guests to stay over comfortably.

Imagine waking up to stunning, far-reaching views of the beautiful rural setting that surrounds this home!

The outdoor space includes a seating area, ideal for enjoying a morning coffee or hosting a summer barbecue with friends and family.

With a total of 752 sq ft, this park home offers a perfect blend of comfort and style. Additionally, off road parking ensures convenience for you and your guests. Whether you are looking for a peaceful retreat or a cosy home to make your own, this property in Odessa Park is sure to capture your heart. Don't miss the opportunity to own a piece of tranquility in this lovely setting.

Agents Note.

Pitch Fee: £152 per month payable to site owner.

Council Tax Band: A


EPC Rating: Exempt

Mains Gas, Electric and Water are connected.

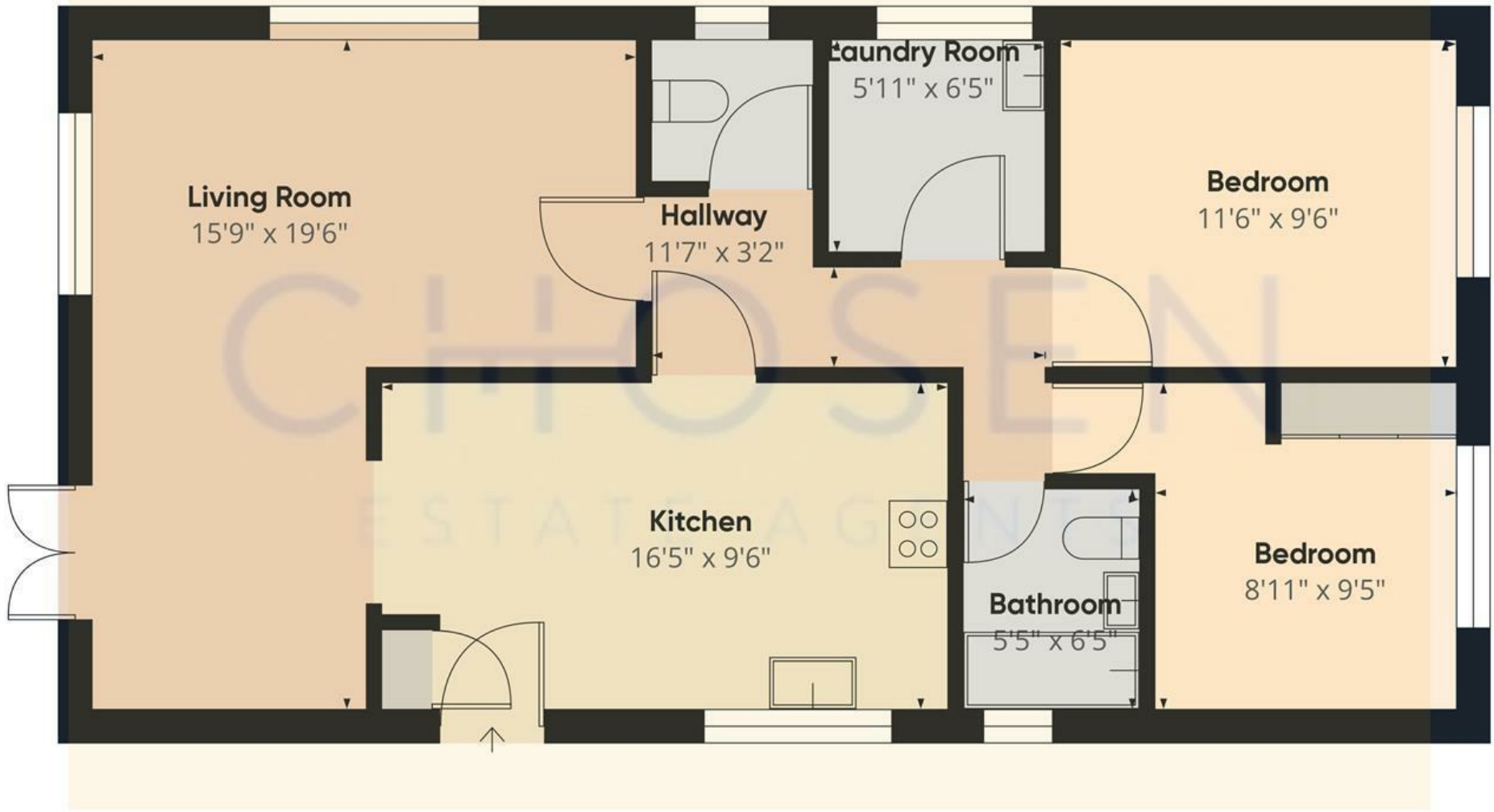
Over 50's complex.

- Two Bedroom Detached Park Home
- Stunning Views
- Bathroom And Separate WC
- Popular Development
- Living/Dining Room
- Off Road Parking
- Utility Room
- Council Tax Band: A

Energy Efficiency Rating

	Current	Potential
<i>Very energy efficient - lower running costs</i>		
(92 plus) A		
(81-91) B		
(69-80) C		
(55-68) D		
(39-54) E		
(21-38) F		
(1-20) G		
<i>Not energy efficient - higher running costs</i>		
England & Wales	EU Directive 2002/91/EC	





Approximate total area⁽¹⁾
752.42 ft²

(1) Excluding balconies and terraces

While every attempt has been made to ensure accuracy, all measurements are approximate, not to scale. This floor plan is for illustrative purposes only.