



95, Moorfield Road, Brockworth, Gloucester, GL3 4JQ

£325,000

CHOSEN
ESTATE AGENTS

THE PROPERTY

Welcome to this charming property located on Moorfield Road in the ever popular Brockworth, Gloucester. This delightful house boasts two spacious reception rooms, perfect for entertaining guests or simply relaxing with your loved ones. With three cosy bedrooms, there is ample space for the whole family to unwind and rest comfortably.

The property features a well-appointed bathrooms as well as a downstairs cloakroom, ensuring convenience and privacy for all residents. This house offers a cosy and inviting atmosphere that you will be delighted to call home.

One of the standout features of this lovely property is the parking space available for up to three vehicles, providing ample room for both residents and guests. This convenience is a rare find and adds to the appeal of this already charming home.

Located in the heart of Brockworth, you will enjoy the tranquillity of village life while still being within easy reach of local amenities and transport links. Don't miss the opportunity to make this wonderful house your new home. Contact us today to arrange a viewing and take the first step towards your dream lifestyle in Gloucester.

Agents Note.

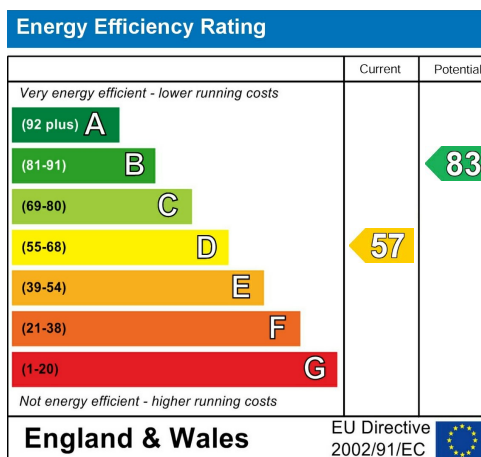
Freehold.

EPC Rating: D57

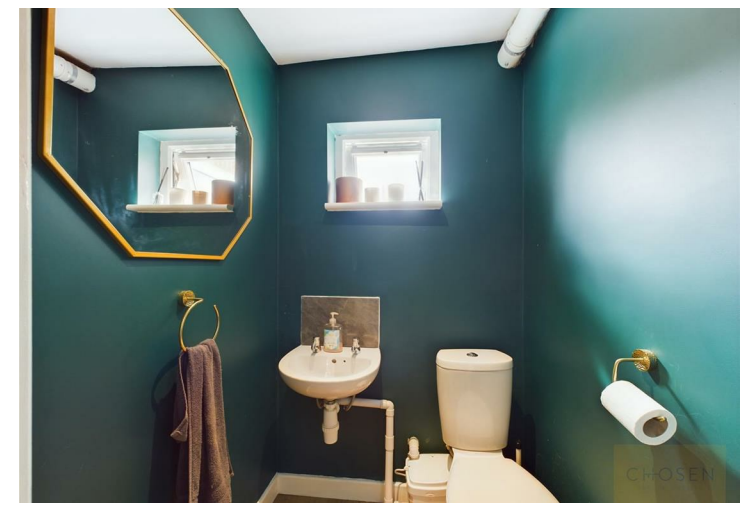
Tewkesbury Borough Council Band: C

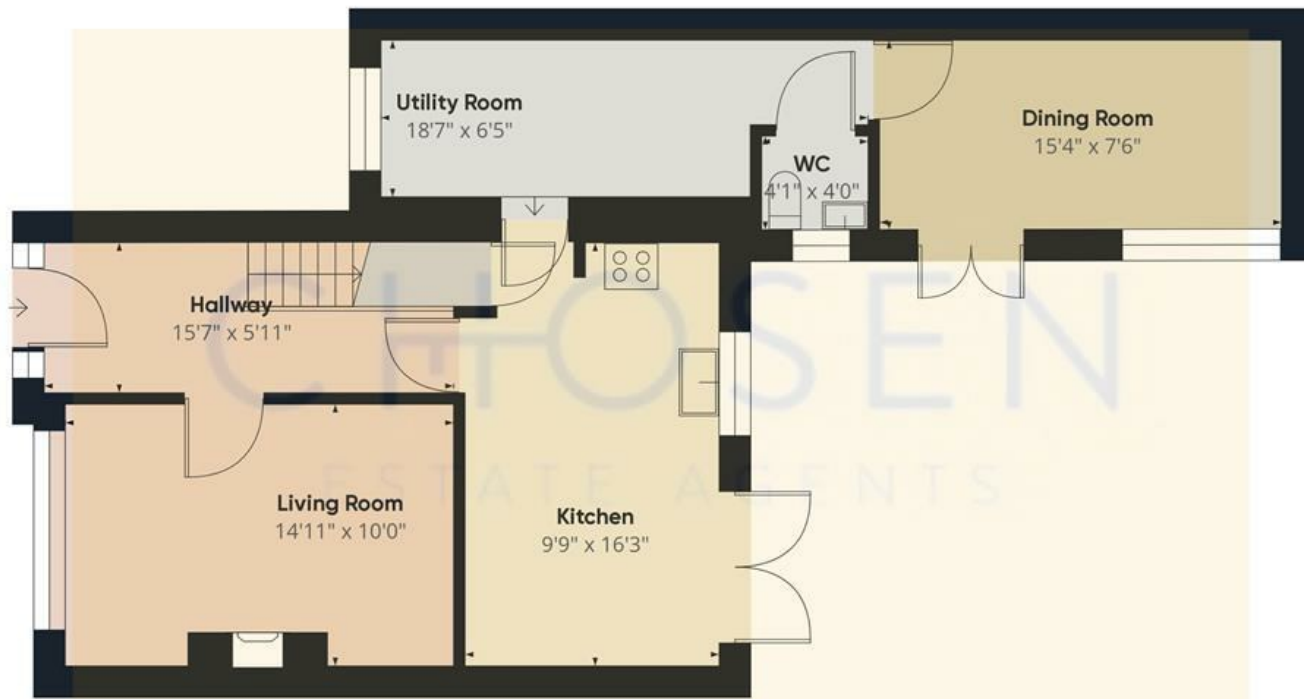
Mains Gas, Electric and Water are believed to be connected.

Fibre Broadband is available in the area.



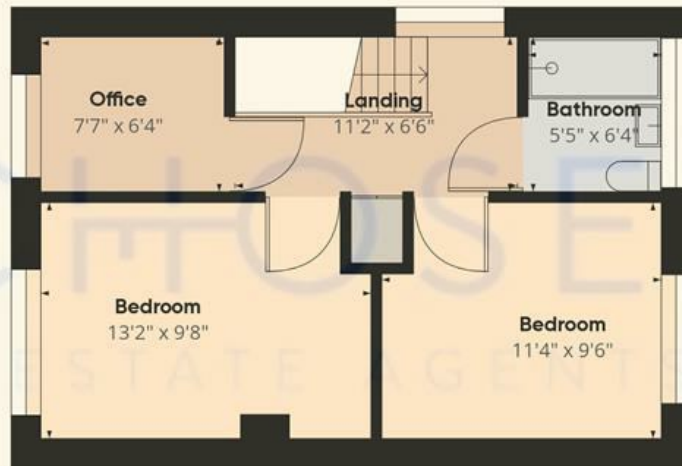
- Three Well-Proportioned Bedrooms
- Contemporary Design With Stylish Interior Finishes
- Versatile Garden Layout
- Well-Maintained And Modernised Throughout
- EPC Rating: D57
- Generous Living Areas Including A Bright And Airy Lounge
- Patio Area Ideal For Entertaining
- Potential For Extension, Subject To Planning Permission
- Family-Friendly Location With Nearby Schools And Playgrounds
- Council Tax Band: C





Floor 0

Approximate total area⁽¹⁾
1029 ft²



Floor 1

(1) Excluding balconies and terraces

While every attempt has been made to ensure accuracy, all measurements are approximate, not to scale. This floor plan is for illustrative purposes only.

GIRAFFE360