



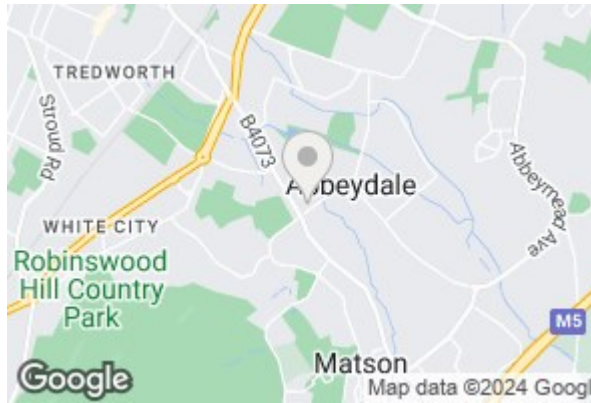
26 Sudbrook Way, Gloucester, Gloucestershire, GL4 4QW

£350,000

FOR SALE



- THREE BEDROOM DETACHED HOME
- OPEN PLAN LIVING
- IDEAL FAMILY HOME
- COUNCIL TAX BAND: D
- NO ONWARD CHAIN
- NO THROUGH ROAD
- DOWNSTAIRS SHOWER ROOM AND UPSTAIRS BATHROOM
- EPC RATING: C



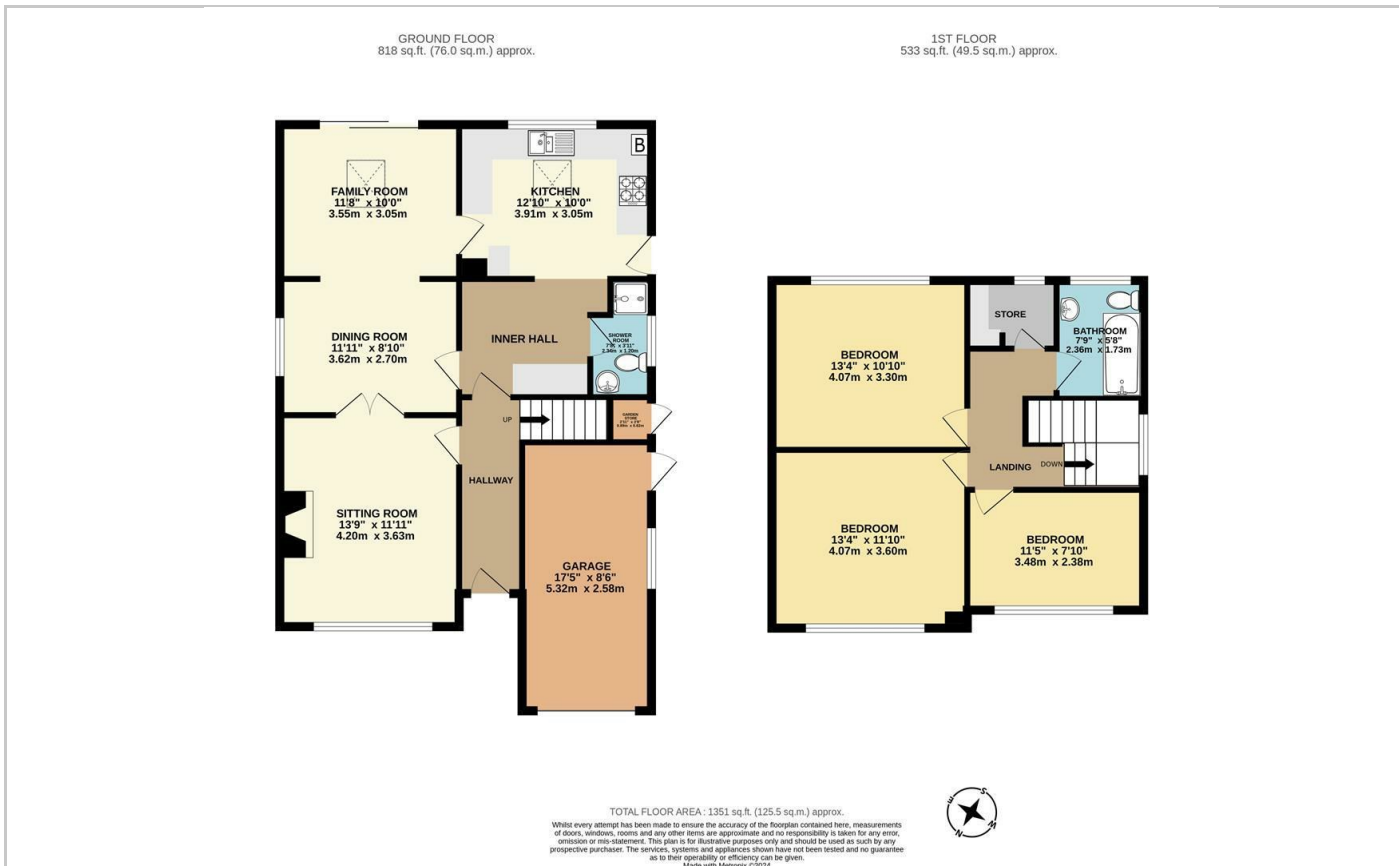
THE PROPERTY

Chosen Estate Agents are delighted to be presenting this extended three bedroom detached home to the market, with no onward chain!

Ideally positioned in a quiet cul-de-sac setting, this home has been Extended and improved throughout. The property boasts three reception rooms along with a kitchen/breakfast room, utility and downstairs cloakroom with shower.

Upstairs there are three sizeable bedrooms, a walk in storage wardrobe area, along with a family bathroom with bath and shower over.

Externally the property boasts a driveway to the front, with garage, and an enclosed rear garden mainly laid to lawn.



| Energy Efficiency Rating | | |
|---|-----------|-----------|
| | Current | Potential |
| Very energy efficient - lower running costs | | |
| (92 plus) A | | |
| (81-91) B | | 82 |
| (69-80) C | 72 | |
| (55-68) D | | |
| (39-54) E | | |
| (21-38) F | | |
| (1-20) G | | |
| Not energy efficient - higher running costs | | |