



119 Oldbury Orchard, Churchdown, Gloucester, GL3 2NX

£350,000

FOR SALE



- DETACHED
- SEPARATE DINING ROOM
- VILLAGE LOCATION
- EPC RATING - D
- 2/3 BEDROOMS
- CONSERVATORY
- NO ONWARD CHAIN
- COUNCIL TAX BAND - D

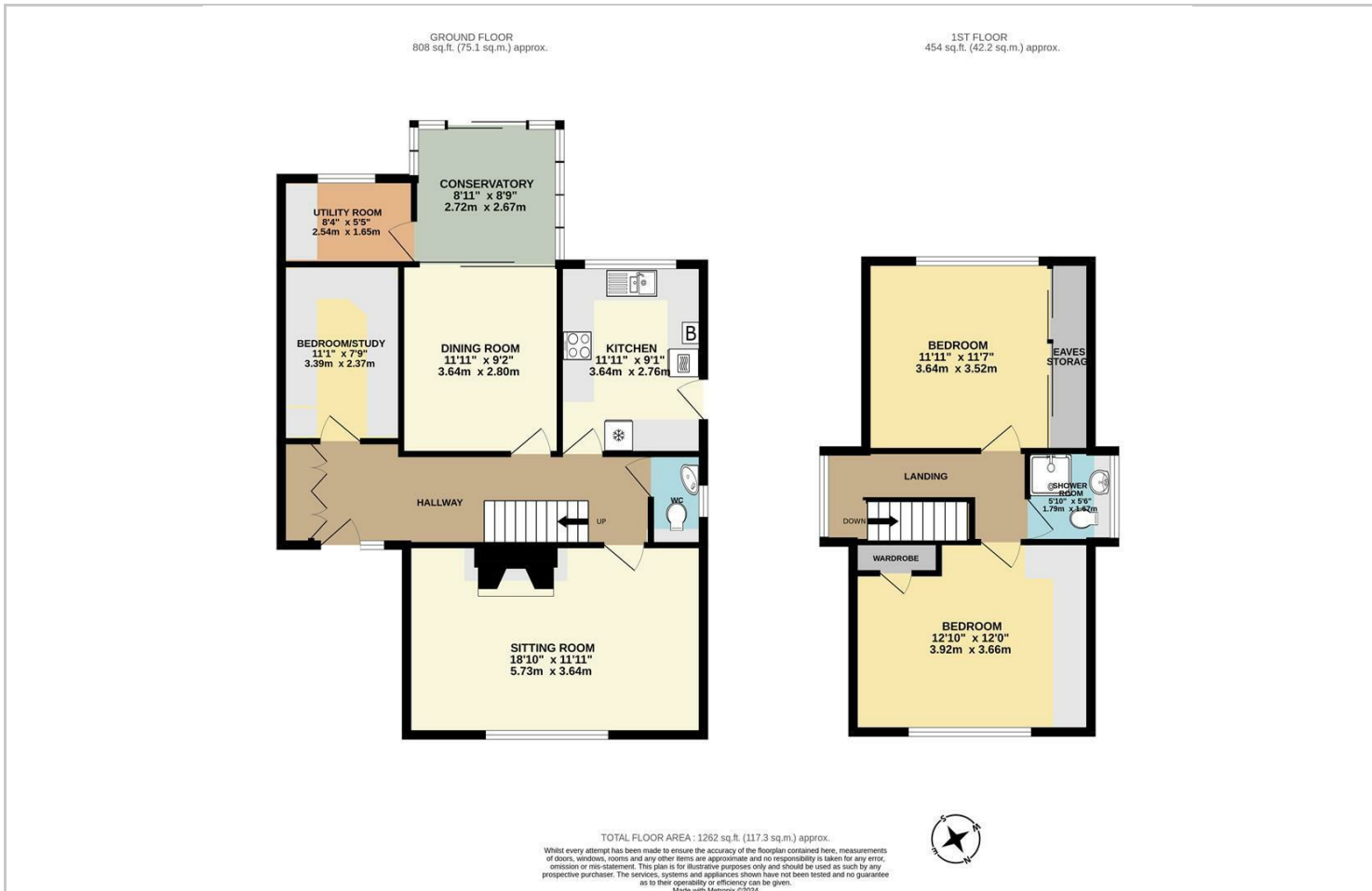


EXPLORE THE ALLURE OF CHURCHDOWN VILLAGE LIVING IN THIS WELL-POSITIONED 2/3 BEDROOM DETACHED HOME, OFFERING VERSATILE SPACES AND ENDLESS POSSIBILITIES.

Upon entering, you are greeted by a warm and inviting ambiance that flows seamlessly through the well-appointed living spaces. The versatile layout offers two generously sized bedrooms upstairs, with the option to utilize a third room as a bedroom or office on the ground floor.

Boasting a separate kitchen and dining room, the property offers 2 RECEPTION ROOMS and has the added convenience of a CONSERVATORY to the rear of the property. There is also a separate UTILITY ROOM in the home. Convenience is key, and this property offers the luxury of DRIVEWAY PARKING for at least 3 vehicles, ensuring you and your guests always have a designated space.

Being offered to the market with NO ONWARD CHAIN, the potential to transform this house into your dream home awaits. Embrace the opportunity to customize and create a living space that reflects your unique style and preferences.



Energy Efficiency Rating		
	Current	Potential
Very energy efficient - lower running costs		
(92 plus) A		
(81-91) B		
(69-80) C		
(55-68) D	58	
(39-54) E		
(21-38) F		
(1-20) G		
Not energy efficient - higher running costs		
		81