

Carleton Road, Pontefract

Offers In Excess Of £185,000


MARTIN&CO

Carleton Road, Pontefract

House - Mid Terrace

3 Bedrooms, 1 Bathroom

Offers In Excess Of £185,000

- SUPERB, IMMACULATE & SPACIOUS STONE FRONTED VICTORIAN TERRACE HOUSE
- SOUGHT AFTER, HIGHLY REGARDED LOCATION WITHIN WALKING DISTANCE OF TOWN CENTRE
- SIMPLY OOZES CHARACTER & STYLE OF THE PERIOD WITH ALL THE CONVENIENCES OF MODERN DAY LIVING
- IDEAL FOR THE COMMUTER. GREAT ROAD AND RAIL LINKS. CENTRAL MAJOR NORTHERN TOWNS
- ENTRANCE HALL, LOUNGE, DINING ROOM & COMPREHENSIVE FITTED KITCHEN
- FIRST FLOOR SPLIT LEVEL LANDING, MASTER BEDROOM WITH EN SUITE SHOWER ROOM
- TWO FURTHER BEDROOMS AND HOUSE BATHROOM WITH SHOWER
- SMALL BUFFER GARDEN TO THE FRONT. REAR COURTYARD/PARKING
- EPC RATING D
- COUNCIL TAX BAND A

Nestled in the heart of Carleton Road, Pontefract, this stunning Victorian terrace house could be your next dream home waiting to be discovered. From the moment you step into the inviting entrance hall, you'll be captivated by the seamless blend of classic charm and contemporary living.

The house boasts a beautifully designed kitchen that effortlessly leads into a sophisticated dining area, ideal for hosting gatherings or unwinding with family. The elegant lounge, with its walk-in bay window, offers a peaceful retreat with a view of the front garden.

Ascending to the first floor, you'll find a master bedroom with its own en suite shower room, providing a luxurious sanctuary. Two additional bedrooms offer cosy spaces to relax, plus a modern house bathroom with shower ensures convenience for all.

Outside, a charming front garden adds a touch of greenery, while the rear courtyard can serve as a convenient parking space and/or an outside living space ideal for barbecues or simply relaxing on warm sunny days.

If you're in search of a home that radiates character and modern comfort, this property on Carleton Road is a must-see. Don't let this opportunity slip away - come and experience the allure of this delightful home, where you can create lasting memories and truly make it your own.



Entrance Hall
A double glazed front entrance door opens to this inviting hallway. Having luxury vinyl tile flooring, central heating radiator and staircase leading to the first floor.

Lounge
Having a double glazed walk in bay window to the front aspect, Victorian style central heating radiator and luxury vinyl tile flooring. The focal point of this light and airy room is the eye catching feature fireplace having a timber surround housing a cast iron style inset, grate and black granite style hearth. There are further attractive features in keeping with the period including a picture rail and stylish built in display shelves occupying the alcoves

Dining Room
A spacious sophisticated dining space, perfect for entertaining guests. Having a feature wall and quality built in

storage cupboard and display shelves. There is luxury vinyl tile flooring, a central heating radiator and a double glazed window overlooking the rear courtyard

Kitchen
A quality comprehensive fitted kitchen providing excellent storage solutions and a range of integrated appliances, including a built in electric fan assisted oven, ceramic hob with chimney style extractor hood over and an integrated dishwasher. The timber style laminate work surfaces are complimented by white tiled splashbacks and incorporates a double white ceramic Belfast sink with chrome mixer tap over. There is plumbing for an automatic washing machine, space for a fridge freezer and a unit housed central heating boiler. Having downlights to ceiling and display lighting enhancing the luxury vinyl tile flooring. There is a double glazed rear window and external door to the side aspect providing access to the rear outside space



First Floor Landing

A particularly elegant split level gallery landing providing access to the three bedrooms and house bathroom

Master Bedroom

A spacious bedroom having two double glazed windows to the front aspect, a central heating radiator and access to the en suite shower room

En Suite

A white three piece suite comprising of a low level flush WC, wash hand basin, shower with tiling and extractor fan.

Bedroom Two

Another lovely double room having a double glazed window to the rear aspect and a gas central heating radiator.

Bedroom Three

This good size single bedroom offers a versatile space to suit the individual and is currently used as a beauty room by the current owners. Having a double glazed window to the rear aspect and a gas central heating radiator.

House Bathroom

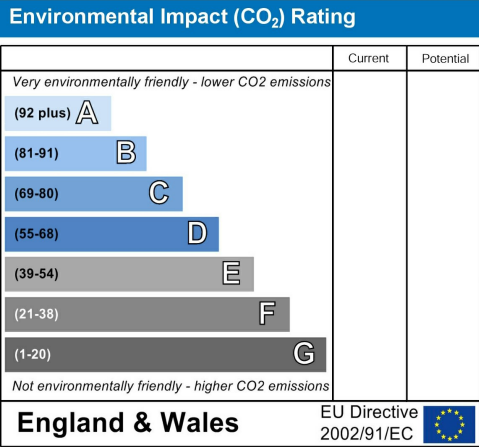
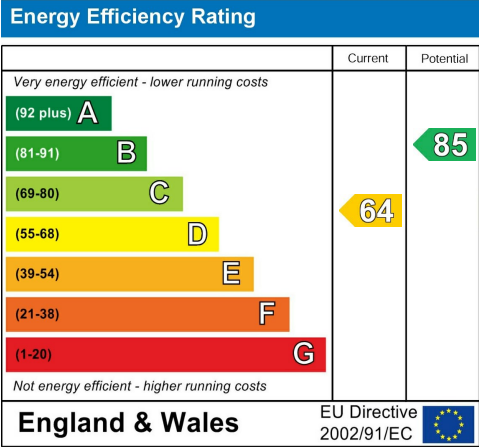
A modern white suite comprising of a low level flush W.C, a half pedestal wash hand basin, rectangle panel double end bath with shower and screen over. There are fully tiled walls, a gas central heating towel rail and a double glazed Velux style double glazed window.

Outside

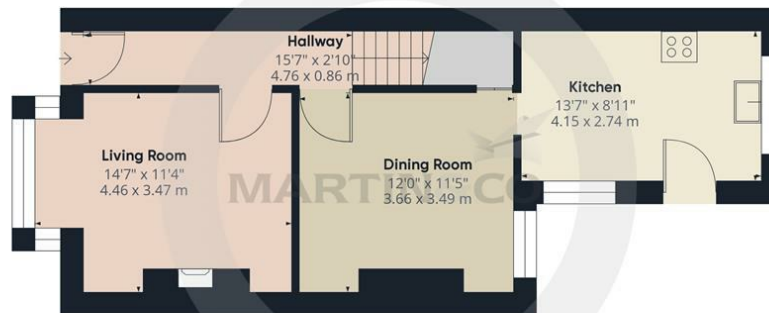
An enclosed versatile courtyard with double gates to the rear for parking if desired. Currently used as a delightful outside living space, ideal for outdoor entertaining, barbecues, or simply relaxing on sunny days

SALES BUYER CHECKS

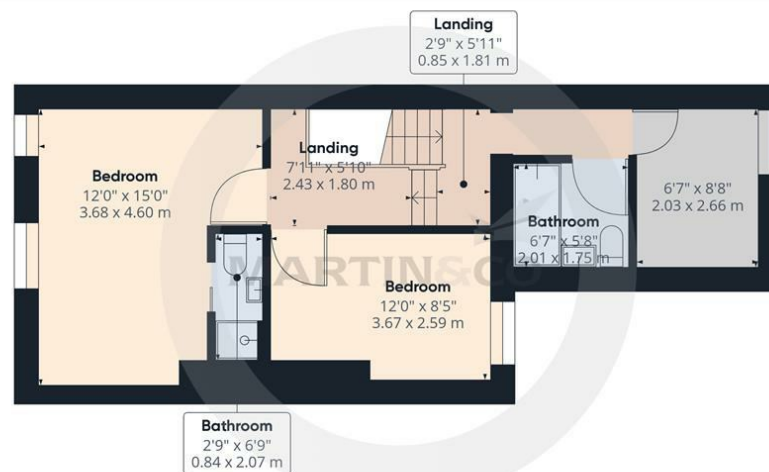
Agents are required by law to conduct anti-money laundering checks on all those buying a property. We outsource the initial checks to a partner supplier called I Am Property/Movebutler who will contact you once you have had an offer accepted on a property you wish to buy. The cost of these checks is £25 per person. This is a non-refundable fee. These charges cover the cost of obtaining relevant data, any manual checks and monitoring which might be required. This fee will need to be paid and the checks completed in advance of the office issuing a memorandum of sale on the property you would like to buy.







Floor 1



Floor 2

Approximate total area¹⁾

922.68 ft²
85.72 m²

(1) Excluding balconies and terraces

While every attempt has been made to ensure accuracy, all measurements are approximate, not to scale. This floor plan is for illustrative purposes only.

GIRAFFE360

Martin & Co Pontefract Sales
5 Cornmarket, Pontefract, West Yorkshire, WF8 1AN
01977 799550 . pontefract@martinco.com

01977 799550
<http://www.martinco.com>



Accuracy: References to the Tenure of a Property are based on information supplied by the Seller. The Agent has not had sight of the title documents. A Buyer is advised to obtain verification from their Solicitor. Items shown in photographs including but not limited to carpets, fixtures and fittings are not included unless specifically mentioned within the sales particulars. They may however be available by separate negotiation. Buyers must check the availability of any property and make an appointment to view before embarking on any journey to see a property. No person in the employment of the agent has any authority to make any representation about the property, and accordingly any information given is entirely without responsibility on the part of the agents, sellers(s) or lessors(s). Any property particulars are not an offer or contract, nor form part of one. **Sonic / laser Tape:** Measurements taken using a sonic / laser tape measure may be subject to a small margin of error. **All**

Measurements: All Measurements are Approximate. **Services Not tested:** The Agent has not tested any apparatus, equipment, Fixtures and Fittings or services and so cannot verify that they are in working order or fit for the purpose. A Buyer is advised to obtain verification from their Solicitor or Surveyor.

