

HORTON CLOSE ALCESTER WARWICKSHIRE



An extended and much-improved, semi-detached property being situated within a cul-de-sac and benefiting from driveway parking for several cars, as well as a carport, wall mounted electric car charger and detached garage with home office (see garage notes).

The accommodation comprises: Reception porch and hall, two reception rooms, rear conservatory, kitchen, utility, WC, three bedrooms, re-fitted shower room and delightful landscaped garden to rear EPC rating – C.

£330,000

32 Horton Close, Alcester, Warwickshire, B49 6LB

Living Room

4.05m (13'4") x 3.79m (12'5")



Conservatory

2.16m (7'1") x 1.99m (6'6")



Kitchen

3.34m (10'11") x 2.32m (7'7")



Dining Room

3.34m (10'11") x 2.38m (7'10")



Bedroom One

4.58m (15') max x 2.72m (8'11")



Bedroom Three

2.90m (9'6") x 2.05m (6'9")



Bedroom Two

2.90m (9'6") x 2.81m (9'3")



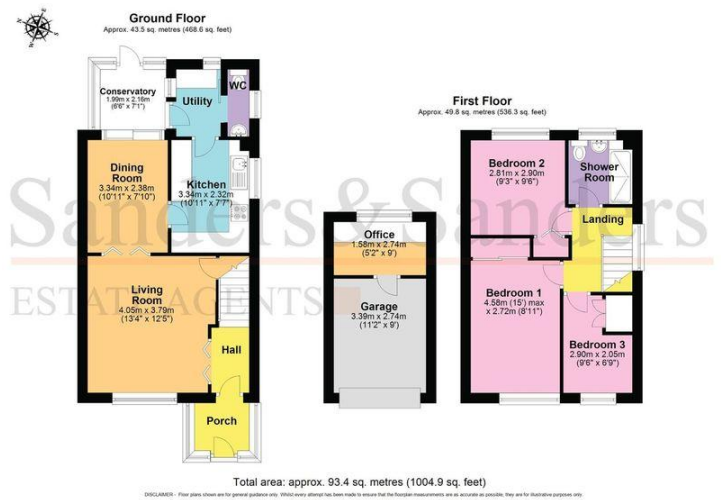
Shower Room

1.90m (6'3") x 1.89m (6'3")



Rear Garden





Garage 3.39m (11'2") x 2.74m (9')

Please note that this area is currently sub-divided to incorporate an office area, and the office area would need to be removed to allow space to park a vehicle.

Office 2.74m (9') x 1.58m (5'2")

Please note that this area is currently sub-divided from the original garage space, and this would need to be removed if the original garage was needed to park a vehicle.

Floor Plans & Property Details Disclaimer

These plans are for identification purposes only in relation to where one room is situated to another. They are not to be relied upon in any way for dimensions, scaling or sq. ft/metres. We will not be held responsible for any loss incurred, due to reliance on these measurements from the floor plans or measurements from the property details. You are advised to confirm all measurements.

Fixtures & Fittings

Please note that the fixtures & fittings shown on the photographs, contained within these property details, do not form part of a fixtures & fittings list. Some items may/may not be included. You are advised to clarify what items are included before entering into any negotiations.